

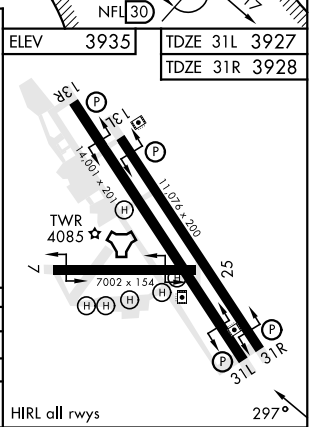
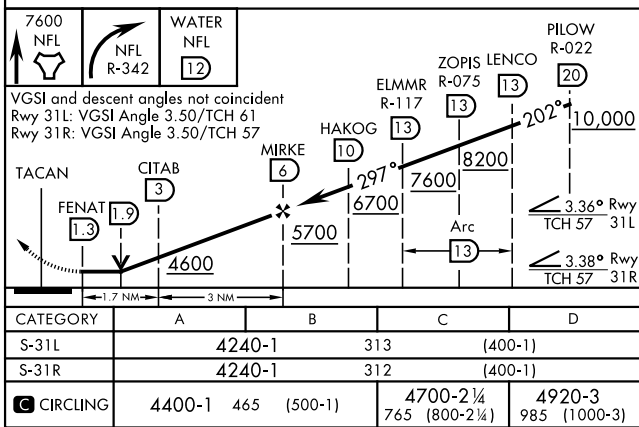
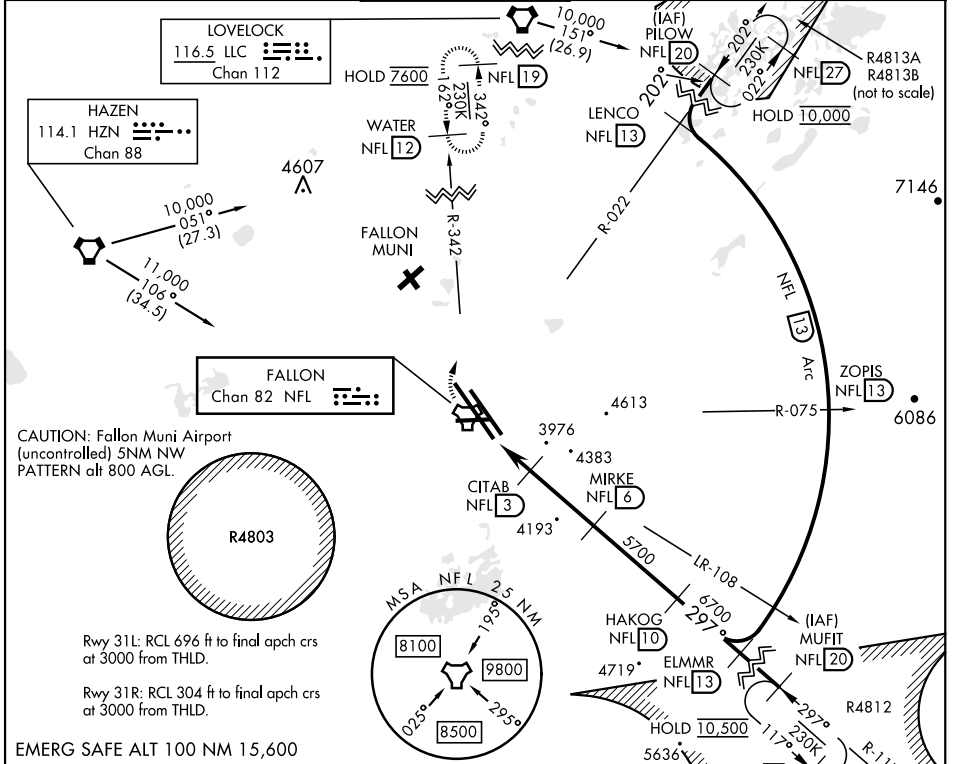
# TACAN Y RWY 31L/R

TACAN NFL Chan <b>82</b>	APCH CRS <b>297°</b>	Rwy Idg 31L <b>14,001</b> TDZE 31L <b>3927</b> Arpt Elev <b>3935</b>	31R <b>11,076</b> 31R <b>3928</b>
-----------------------------	-------------------------	--	--------------------------------------

[USN] FALLON NAS (VAN VOORHIS FLD) (KNFL)

<p><b>ATIS ★</b> <b>370.925</b></p>		<p>NAVY FALLON APP CON <b>120.85 360.2</b></p>		<p>NAVY FALLON TOWER ★ <b>119.25 340.2</b></p>		<p>GND CON <b>251.15</b></p>		<p>CLNC DEL <b>353.55</b></p>		<p>ASR/PAR</p>
---	--	--	--	--	--	----------------------------------	--	-----------------------------------	--	----------------

MISSED APPROACH: Climb direct NFL TACAN, then climbing right turn to 7600. Intercept NFL R-342 outbound to WATER and hold. Continue climb-in-hold to 7600.



CATEGORY	A	B	C	D
S-31L	4240-1	313	(400-1)	
S-31R	4240-1	312	(400-1)	
CIRCLING	4400-1 465 (500-1)	4700-2 765 (800-2 1/4)	4920-3 985 (1000-3)	
		HIRL all rwys		297°

# TACAN Y RWY 31L/R

SW-4, 15 MAY 2025 to 12 JUN 2025

SW-4, 15 MAY 2025 to 12 JUN 2025