

FALLON, NEVADA

# RNAV (GPS) RWY 31L

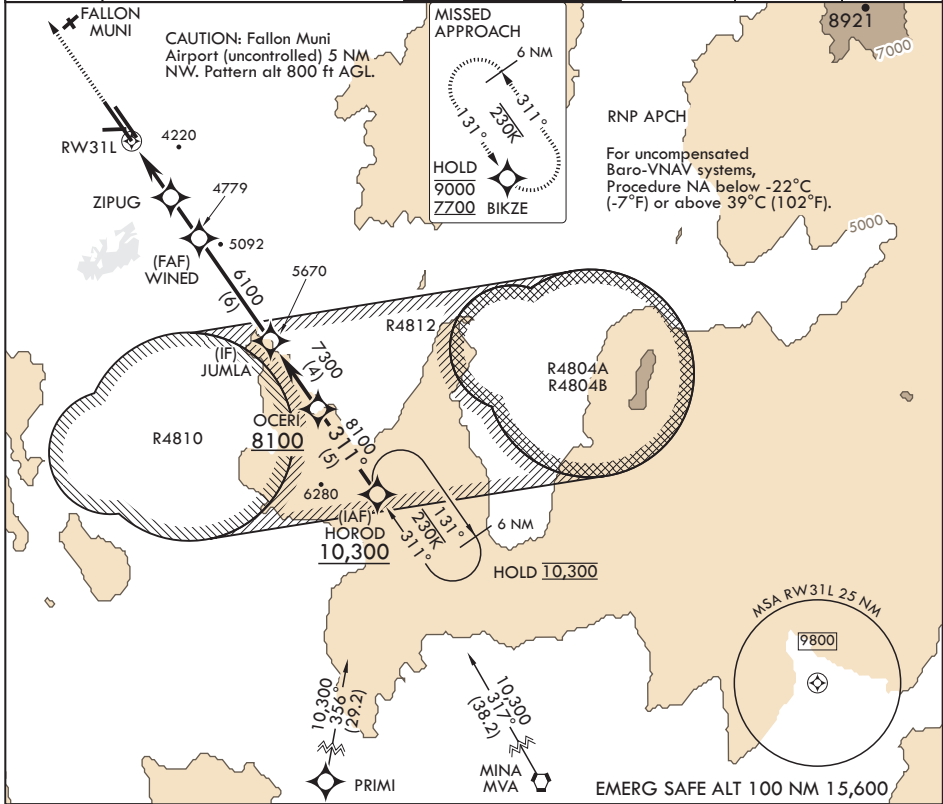
APCH CRS 311°	Rwy Idg 14,001
	TDZE 3927
	Arprt Elev 3935

AL-143 (USN)

FALLON NAS (VAN VOORHIS FLD) (KNFL)

**MISSED APPROACH:** Climb to 7700 direct BIKZE and hold, continue climb-in-hold to 7700.

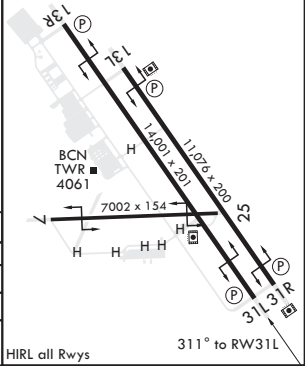
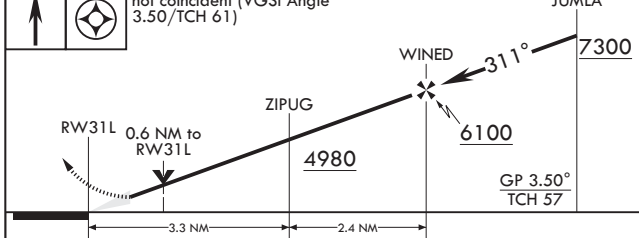
ATIS* 370.925	NAVY FALLON APP CON/DEP CON 120.85 360.2	NAVY FALLON TOWER* 119.25 340.2	GND CON 251.15	CLNC DEL 353.55	ASR/PAR
------------------	---	------------------------------------	-------------------	--------------------	---------



SW-4, 15 MAY 2025 to 12 JUN 2025

SW-4, 15 MAY 2025 to 12 JUN 2025

7700	BIKZE	VGSI and RNAV glidepath not coincident (VGSI Angle 3.50/TCH 61)	ELEV 3935	TDZE 3927
------	-------	---	-----------	-----------



CATEGORY	A	B	C	D
LNAV/VNAV DA	4200-7/8	273	300-7/8	
LNAV MDA	4200-1	273	300-1	
<b>C</b> CIRCLING	4400-1 465 (500-1)	4700-2 1/4 765 (800-2 1/4)	4920-3 985 (1000-3)	

FALLON, NEVADA  
Amdt 3 24MAR22

39°25'N - 118°42'W

FALLON NAS (VAN VOORHIS FLD) (KNFL)

# RNAV (GPS) RWY 31L