

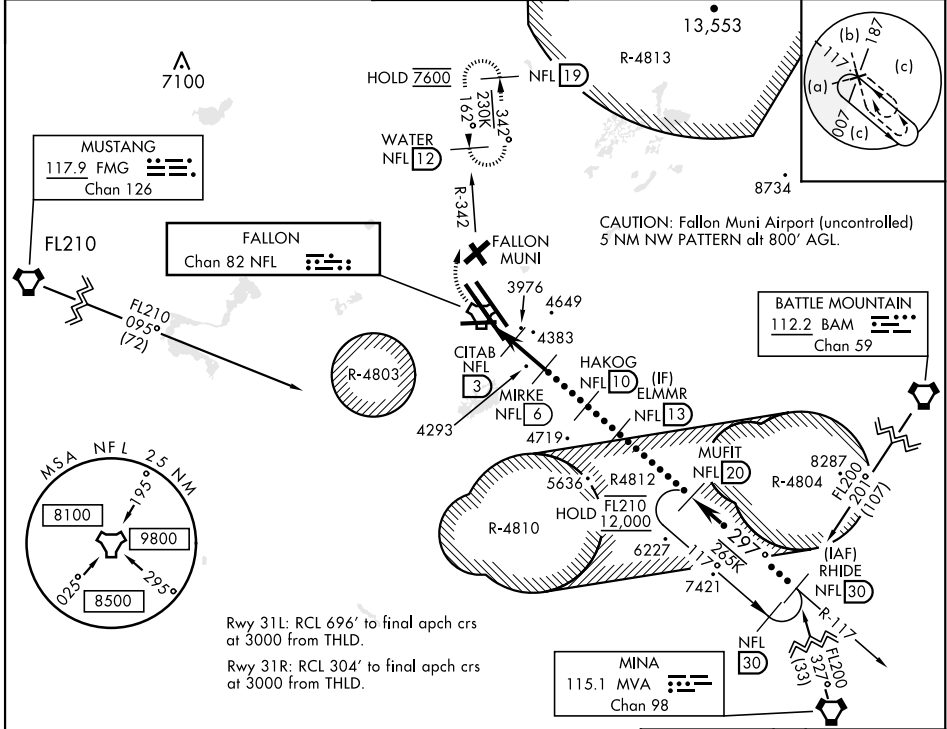
# HI-TACAN Z RWY 31L/R

TACAN NFL Chan <b>82</b>	APCH CRS <b>297°</b>	Rwy Idg TDZE 31L <b>14,001</b> 31R <b>11,076</b>	31L <b>3927</b> 31R <b>3928</b>
		Arpt Elev <b>3935</b>	

AL-143 [USN] FALLON NAS (VAN VOORHIS FLD) (KNFL)

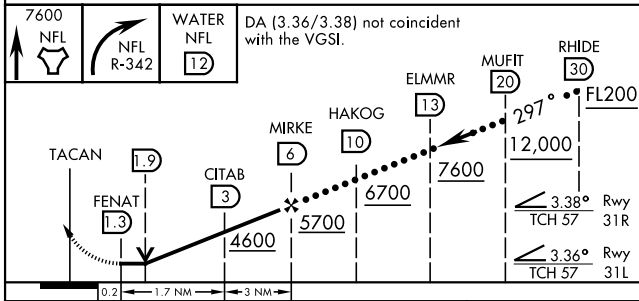
**MISSED APPROACH:** Climb direct NFL TACAN, then climbing right turn to 7600, Intercept NFL R-342 outbound to WATER and hold. Continue Climb-in-hold to 7600.

ATIS ★ <b>370.925</b>	NAVY FALLON APP CON <b>120.85 360.2</b>	NAVY FALLON TOWER★ <b>119.25 340.2</b>	GND CON <b>251.15</b>	CLNC DEL <b>353.55</b>	ASR/PAR
--------------------------	--	---	--------------------------	---------------------------	---------



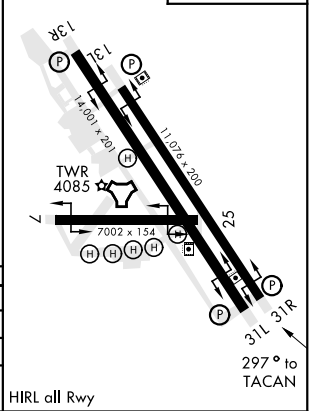
Rwy 31L: RCL 696' to final apch crs at 3000 from THLD.  
Rwy 31R: RCL 304' to final apch crs at 3000 from THLD.

EMERG SAFE ALT 100 NM 15,600



ELEV <b>3935</b>	TDZE 31L <b>3927</b>
	TDZE 31R <b>3928</b>

CATEGORY	C	D	E
S-31L	4240-1	313	(400-1)
S-31R	4240-1	312	(400-1)
<b>C</b> CIRCLING	4700-2¼ 765 (800-2¼)	4920-3 985 (1000-3)	4960-3 1025 (1100-3)



# HI-TACAN Z RWY 31L/R

SW-4, 15 MAY 2025 to 12 JUN 2025

SW-4, 15 MAY 2025 to 12 JUN 2025