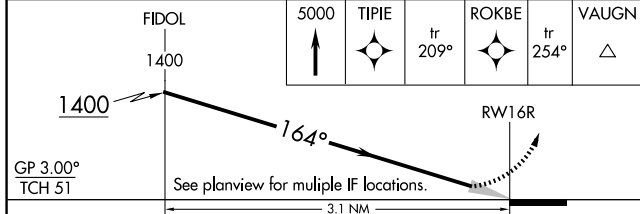
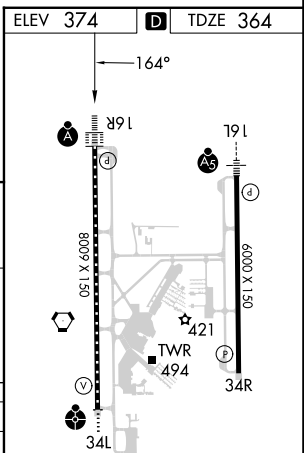
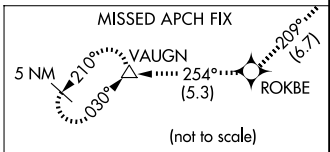
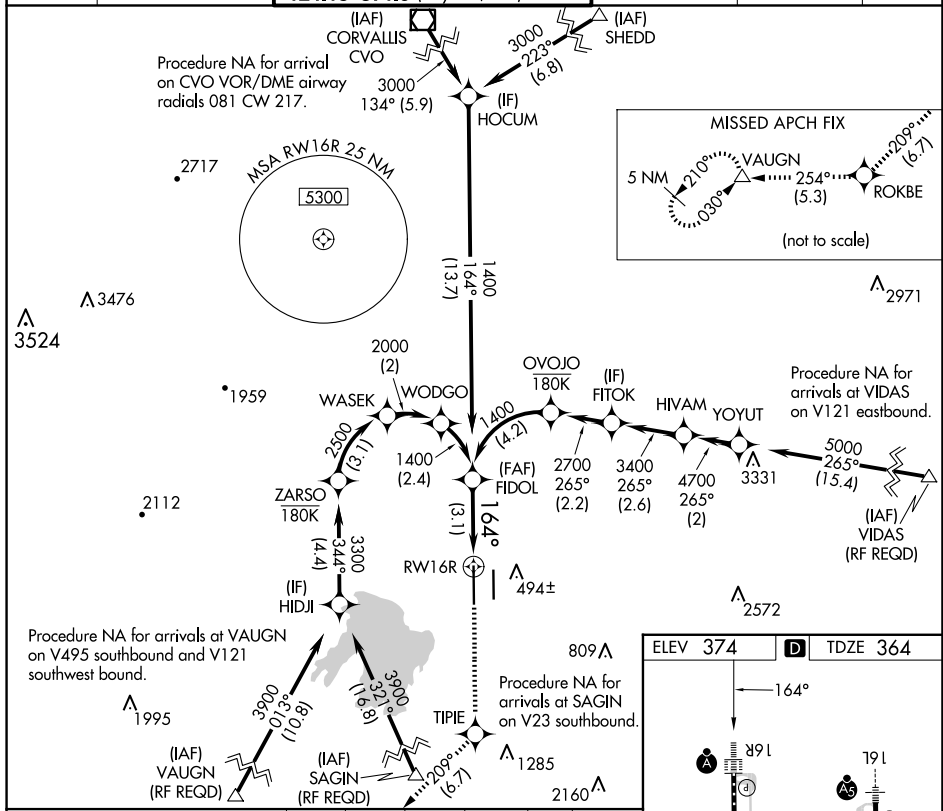


APP CRS	Rwy Idg	<b>8009</b>
<b>164°</b>	TDZE	<b>364</b>
	Apt Elev	<b>374</b>

# RNAV (RNP) Z RWY 16R

MAHLON SWEET FLD (EUG)

RNP AR APCH.		EUGENE TOWER * <b>118.9</b> (CTAF) <b>0 371.9</b> (Rwy 16R/34L) <b>124.15 371.9</b> (Rwy 16L/34R)		GND CON <b>121.7 269.5</b>	CLNC DEL <b>121.7 269.5</b>	UNICOM <b>122.95</b>
<p>For uncompensated Baro-VNAV systems, procedure NA below -9°C or above 54°C. Simultaneous approach authorized. For inop ALS, increase RNP 0.17 all Cats visibility to RVR 4000 and RNP 0.30 all Cats visibility to RVR 5500.</p>		ALSF-2		MISSED APPROACH: Climb to 5000 direct TIPE, and on track 209° to ROKBE, and track 254° to VAUGN and hold, continue climb-in-hold to 5000.		



CATEGORY	A	B	C	D
RNP 0.17 DA		614/24	250 (300-½)	
RNP 0.30 DA		711/30	347 (400-¾)	

**AUTHORIZATION REQUIRED**

NW-1, 15 MAY 2025 to 12 JUN 2025

NW-1, 15 MAY 2025 to 12 JUN 2025