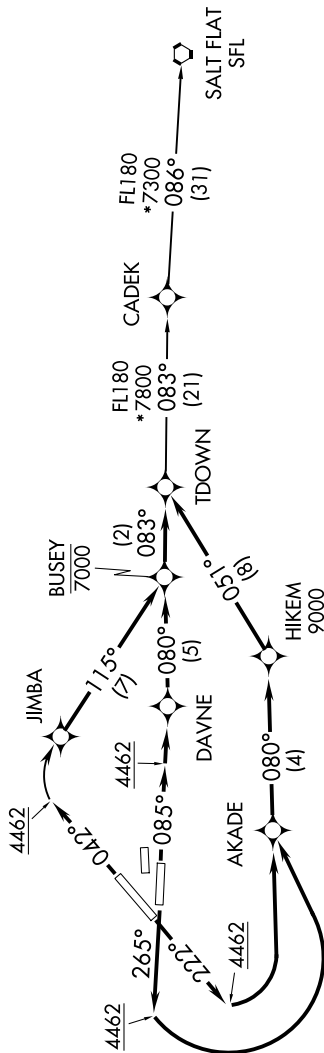
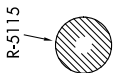
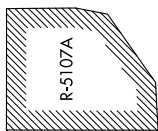


TDOWN THREE DEPARTURE (RNAV)

D-ATIS
 120.0 254.3
 CLNC DEL
 125.0 379.1
 GND CON
 121.9 348.6
 EL PASO TOWER
 118.3 239.275
 EL PASO DEP CON
 119.15 263.0
 A&G CENTER
 135.875 292.15



**TOP ALTITUDE:
 ASSIGNED BY ATC**



NOTE: DME/DME/IRU or GPS required.
 NOTE: RNAV 1.
 NOTE: For use by Turbojet aircraft only.
 NOTE: RADAR required for non-GPS equipped aircraft.

TAKEOFF MINIMUMS
 Rwy 4, 8R: Standard with a minimum climb of 500' per NM to 4462.
 Rwy 22, 26L: Standard with a minimum climb of 500' per NM to 9000.

(NARRATIVE ON FOLLOWING PAGE)

NOTE: Chart not to scale.