

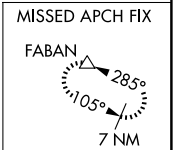
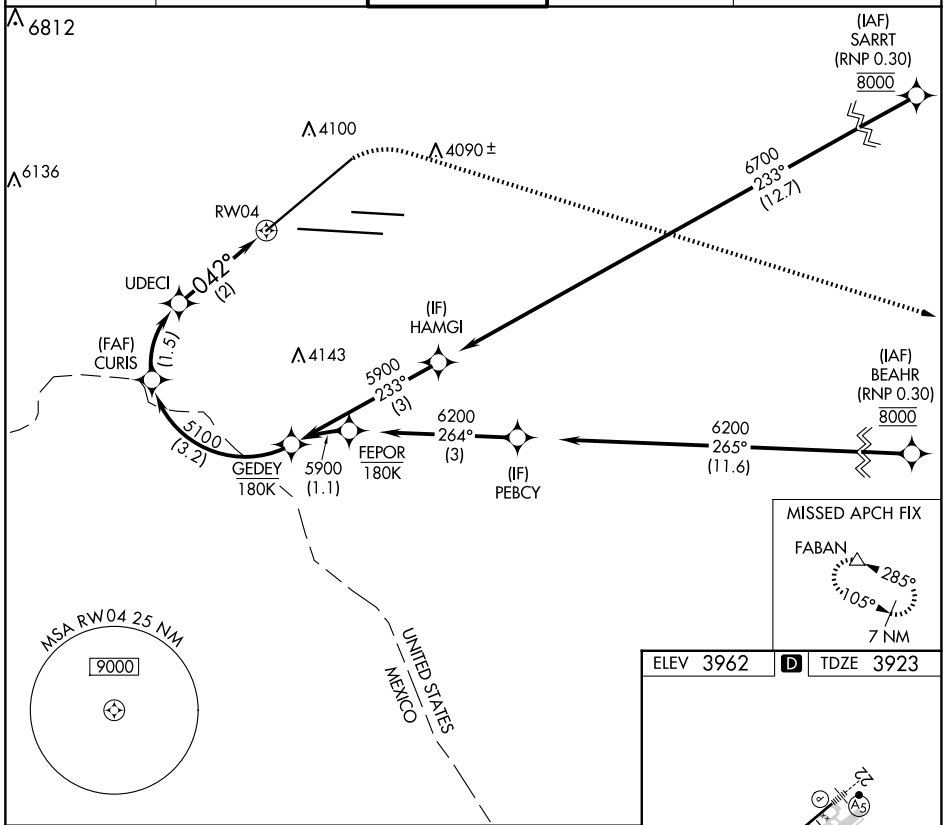
APP CRS	Rwy Idg	<b>12020</b>
<b>042°</b>	TDZE	<b>3923</b>
	Apt Elev	<b>3962</b>

# RNAV (RNP) Z RWY 4

EL PASO INTL (ELP)

RNP AR APCH. RF required.		MISSED APPROACH: Climb to 4400 then climbing right turn to 7500 direct FABAN and hold.	
ASR For uncompensated Baro-VNAV systems, procedure NA below -5°C or above 54°C.			

D-ATIS <b>120.0 254.3</b>	EL PASO APP CON <b>124.25 298.85</b>	EL PASO TOWER <b>118.3 239.275</b>	GND CON <b>121.9 348.6</b>	CLNC DEL <b>125.0 379.1</b>
------------------------------	---	---------------------------------------	-------------------------------	--------------------------------

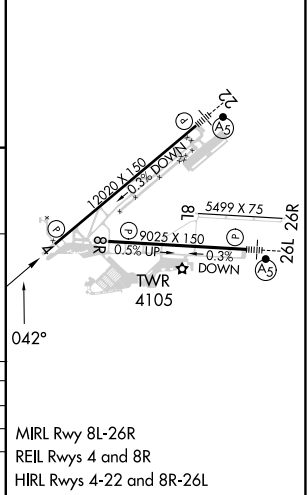


ELEV 3962	<b>D</b> TDZE 3923
-----------	--------------------

See planview for multiple IF locations.

GEDEY	4400	7500	FABAN	
5900			△	
5100				
3.2 NM	1.5 NM	2 NM		
GP 3.00° TCH 55				
CATEGORY	A	B	C	D
RNP 0.20 DA	4282/55		359 (400-1)	
RNP 0.30 DA	4352-1 ¼		429 (400-1 ¼)	

**AUTHORIZATION REQUIRED**



SC-3, 15 MAY 2025 to 12 JUN 2025

SC-3, 15 MAY 2025 to 12 JUN 2025