

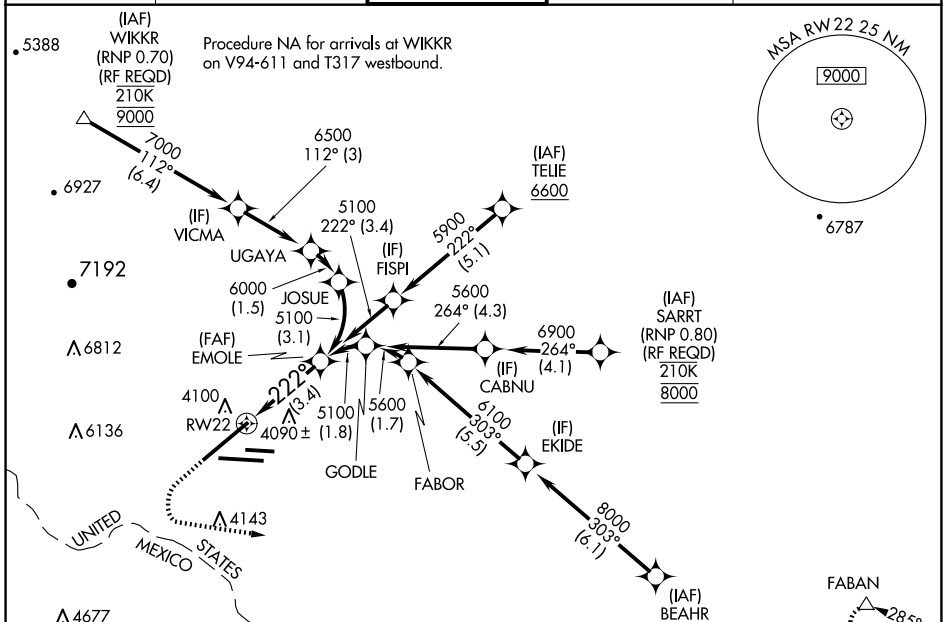
APP CRS	Rwy Idg	<b>12020</b>
<b>222°</b>	TDZE	<b>3950</b>
	Apt Elev	<b>3962</b>

# RNAV (RNP) Z RWY 22

EL PASO INTL (ELP)

RNP AR APCH.	MALSR	MISSED APPROACH: Climb to 4400 then climbing left turn to 7500 direct FABAN and hold.
▼ For uncompensated Baro-VNAV systems, procedure NA below -8°C ASR or above 54°C. For inop ALS, increase RNP 0.10 all Cats visibility to RVR 4000 and RNP 0.30 all Cats visibility to RVR 4500.		

D-ATIS	EL PASO APP CON	EL PASO TOWER	GND CON	CLNC DEL
<b>120.0 254.3</b>	<b>124.25 298.85</b>	<b>118.3 239.275</b>	<b>121.9 348.6</b>	<b>125.0 379.1</b>



ELEV	<b>3962</b>	<b>D</b>	TDZE	<b>3950</b>
------	-------------	----------	------	-------------



	4400	7500	FABAN	EMOLE
			△	5100
	VGS1 and RNAV glidepath not coincident (VGS1 Angle 3.00/TCH 70).			
	RW22			
	See planview for multiple IF locations.			
	3.4 NM			
GP 3.00° TCH 55				

CATEGORY	A	B	C	D
RNP 0.10 DA		4200/24	250 (300-½)	
RNP 0.30 DA		4270/27	320 (400-⅝)	

MIRL Rwy 8L-26R  
REIL Rws 4 and 8R  
HIRL Rws 4-22 and 8R-26L

**AUTHORIZATION REQUIRED**

SC-3, 15 MAY 2025 to 12 JUN 2025

SC-3, 15 MAY 2025 to 12 JUN 2025