

LOC/DME I-ETF 111.5 Chan 52	APP CRS 042°	Rwy Idg TDZE 3923 Apt Elev 3962	12020
---	------------------------	---	--------------

LOC/DME RWY 4

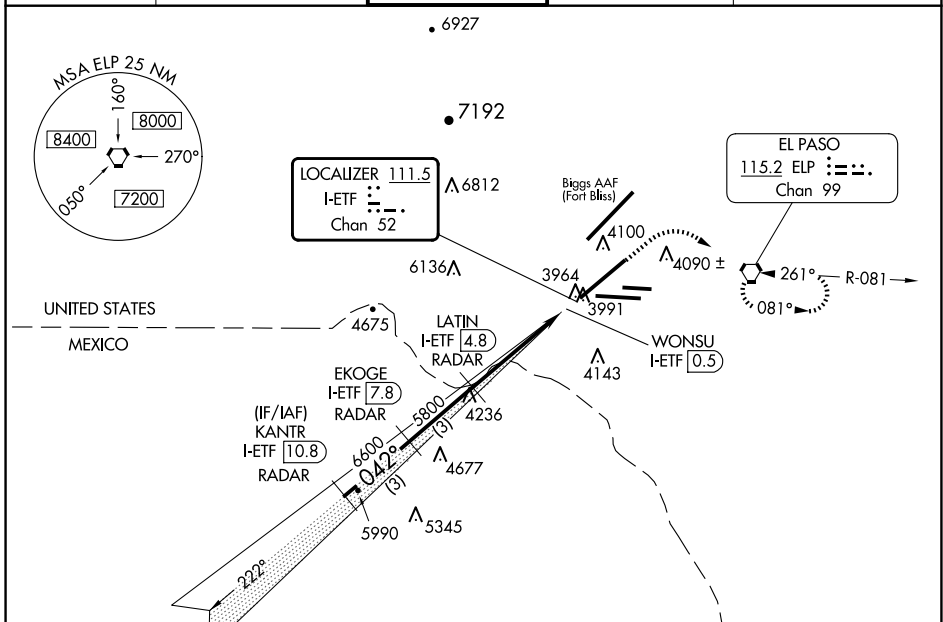
EL PASO INTL (ELP)

RADAR required for procedure entry.

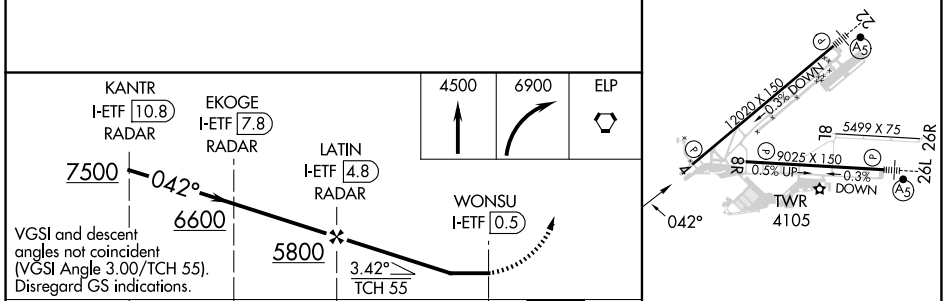
ASR Circling NA for Cat D north of Rwy 26R and northwest of Rwy 4.

MISSED APPROACH: Climb to 4500 then climbing right turn to 6900 direct ELP VORTAC and hold, continue climb-in-hold to 6900.

D-ATIS 120.0 254.3	EL PASO APP CON 124.25 296.85	EL PASO TOWER 118.3 239.275	GND CON 121.9 348.6	CLNC DEL 125.0 379.1
------------------------------	---	---------------------------------------	-------------------------------	--------------------------------



ELEV 3962	D TDZE 3923
-----------	--------------------



	KANTR I-ETF [10.8] RADAR		EKOGE I-ETF [7.8] RADAR		4500	6900	ELP
	7500		6600		WONSU I-ETF [0.5]		
	042°		5800		LATIN I-ETF [4.8] RADAR		
	3 NM		3 NM		4.3 NM		
	3 NM		3 NM		0.7 NM		
CATEGORY	A		B		C		D
S-4	4300/50		377 (400-1)		4300/60		377 (400-1¼)
C CIRCLING	4420-1 458 (500-1)		4460-1 498 (500-1)		4480-1½ 518 (600-1½)		4680-2¼ 718 (800-2¼)

MIRL Rwy 8L-26R
REIL Rwy 4 and 8R
HIRL Rwy 4-22 and 8R-26L

SC-3, 15 MAY 2025 to 12 JUN 2025

SC-3, 15 MAY 2025 to 12 JUN 2025