

EL PASO, TEXAS

HI-VOR or TACAN RWY 26L

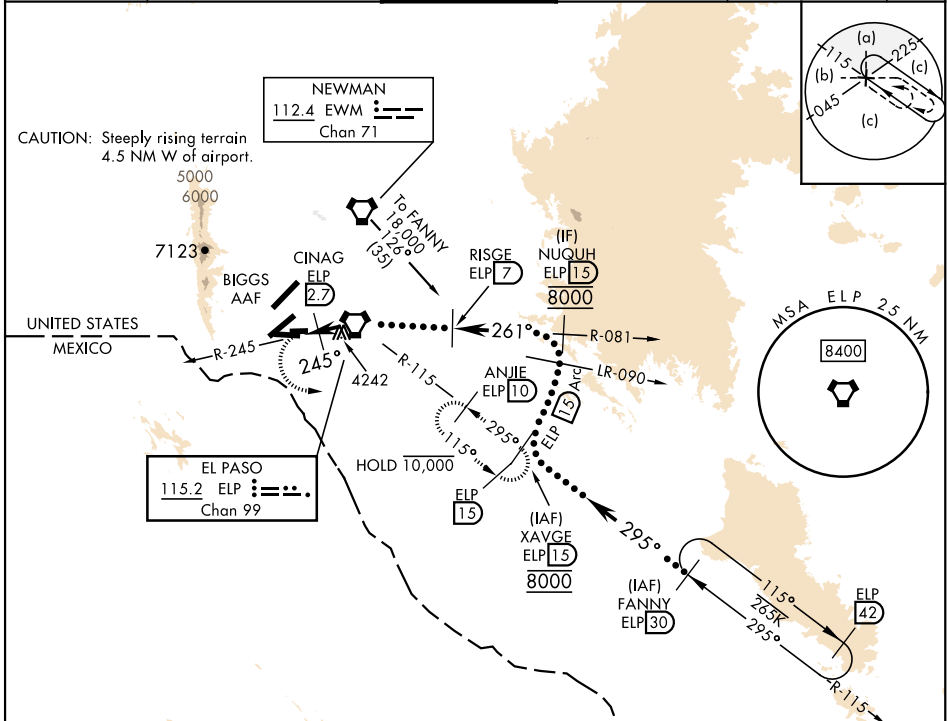
VORTAC ELP 115.2 Chan 99	APCH CRS 245°	Rwy Idg THRE 9025 3962 Arpt Elev 3962
--	-------------------------	---

[USAF]

EL PASO INTL (KELP)

DME required	MALSR 	MISSED APPROACH: Climb to 4400, then climbing left turn to 7000 via heading 080° and ELP VORTAC R-115 to ANJIE/ELP 10 DME and hold, continue climb in hold to 7000.
--------------	-----------	---

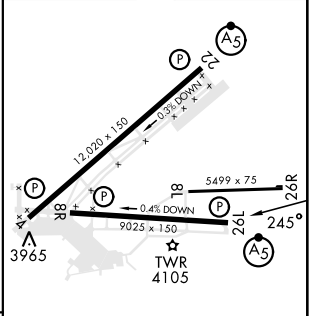
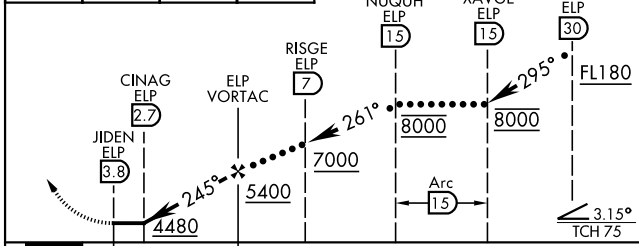
ATIS 120.0 254.3	APP CON S of V16 119.15 353.5 N of V16 124.25 298.85	TOWER 118.3 239.275	GND CON 121.9 348.6	CLNC DEL 125.0 379.1	ASR
----------------------------	--	-------------------------------	-------------------------------	--------------------------------	-----



EMERG SAFE ALT 100 NM 16,000

ELEV	3962	THRE	3962
------	------	------	------

4400	7000	ELP R-115	ANJIE ELP 10
------	------	-----------	--------------



CATEGORY	C	D	E
S-26L	4380-1 ¹ / ₈	418	(500-1 ¹ / ₈)
CIRCUING*	4480-1 ¹ / ₂ 518 (600-1 ¹ / ₂)	4680-2 ¹ / ₄ 718 (800-2 ¹ / ₄)	4700-2 ¹ / ₂ 738 (800-2 ¹ / ₂)

REIL Rwy 4, 8R	MIRL Rwy 8L-26R	HIRL Rwy 4-22 and 8R-26L
----------------	-----------------	--------------------------

EL PASO, TEXAS

31°48'N-106°23'W

EL PASO INTL (KELP)

Amdt 4B 03NOV22

HI-VOR or TACAN RWY 26L

SC-3, 15 MAY 2025 to 12 JUN 2025

SC-3, 15 MAY 2025 to 12 JUN 2025