

TACAN LKI Chan 11 (135.4)	APP CRS 087°	Rwy ldg 10062 TDZE 1428 Apt Elev 1428
---	------------------------	--

TACAN Y RWY 9

DULUTH INTL (DLH)

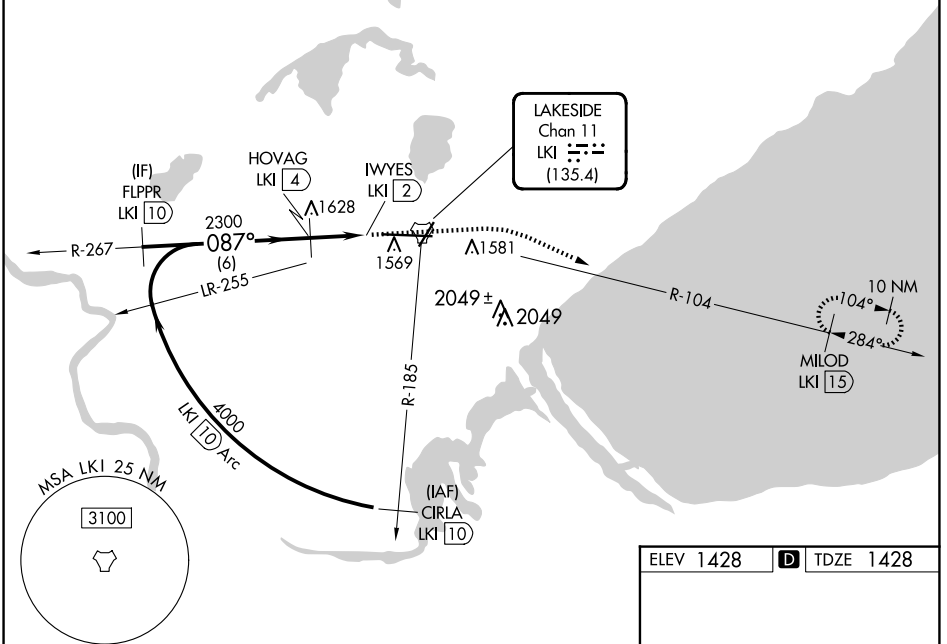
RADAR required for procedure entry.		ALSF-2 	MISSED APPROACH: Climb to 2500, then climbing right turn to 4000 on LKI TACAN R-104 to MILOD/1.5 DME and hold.
 * For inop ALS, increase S-9 Cat E visibility to 1 3/8 SM. # Circling NA for Cats D and E southeast of Rwys 3 and 27.			

ATIS 124.1 270.1	DULUTH APP CON 125.45 233.7	DULUTH TOWER 118.3 257.8	GND CON 121.9 348.6
----------------------------	---------------------------------------	------------------------------------	-------------------------------

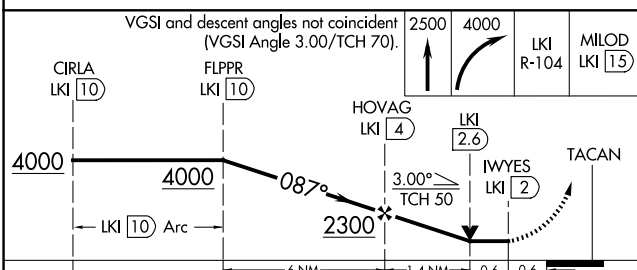
CAUTION: Do not select channel 73 "DLH" for channel 11 "LKI".
Towers 2049' on R-099 channel 73 "DLH".

NC-1, 15 MAY 2025 to 12 JUN 2025

NC-1, 15 MAY 2025 to 12 JUN 2025



EMERGENCY SAFE ALT 100 NM 4100



ELEV 1428	D TDZE 1428
-----------	--------------------

