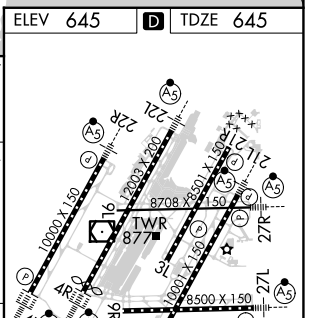
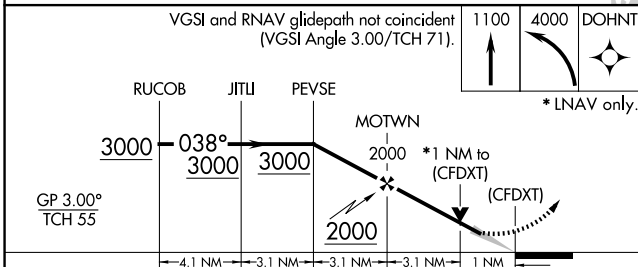
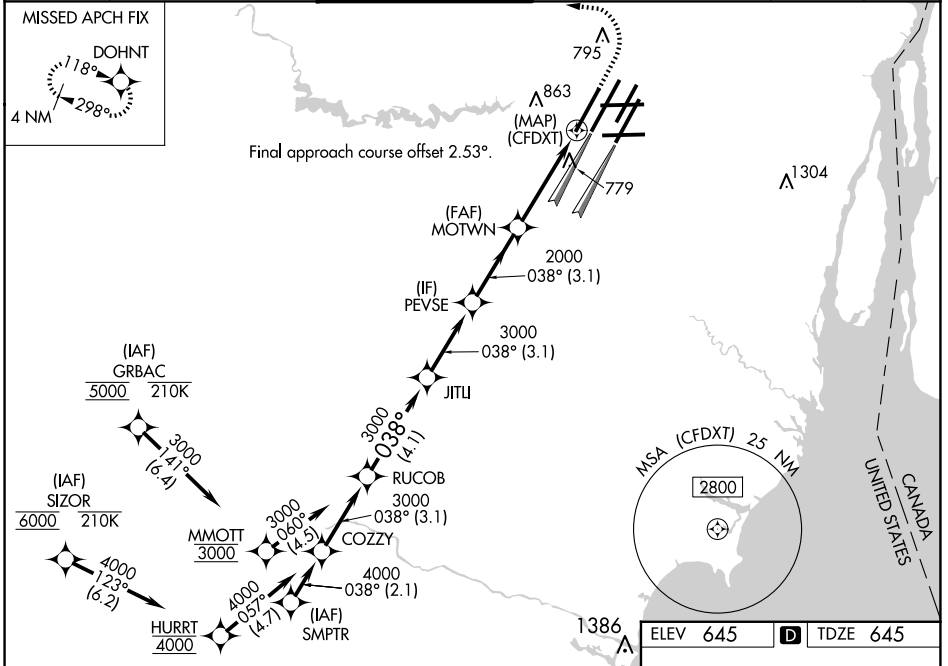


WAAS CH 82439 W04A	APP CRS 038°	Rwy Idg 10000 TDZE 645 Apt Elev 645
--	------------------------	--

RNAV (GPS) Y RWY 4L

DETROIT METRO WAYNE COUNTY (DTW)

RNP APCH. ▼ Simultaneous approach authorized. LNAV procedure NA during simultaneous operations. Use of FD or AP required during simultaneous operations. For uncompensated Baro-VNAV systems, LNAV/VNAV NA below -19°C or above 54°C.		ALSF-2 	MISSED APPROACH: Climb to 1100 then climbing left turn to 4000 direct DOHNT and hold.	
D-ATIS 133.675	DETROIT APP CON 124.05 284.0	METRO TOWER 135.0 317.725	GND CON 121.8 (NW) 119.45 (NE) 132.725 (SW) 119.25 (SE)	CLNC DEL 120.65
				CPDLC



CATEGORY	A	B	C	D
LPV DA	895/24		250 (300-½)	
LNAV/VNAV DA	1068/45		423 (500-¾)	
LNAV MDA	1040/24	395 (400-½)	1040/35	395 (400-¾)
CIRCLING	1180-1	535 (600-1)	1180-1½ 535 (600-1½)	1240-2 595 (600-2)

TDZ/CL Rwys 3R, 4L, 4R and 22R
REL Rwys 3L, 9L, 9R and 21R
HIRL all runways

EC-1, 15 MAY 2025 to 12 JUN 2025

EC-1, 15 MAY 2025 to 12 JUN 2025