

# ILS PRM RWY 22L (CLOSE PARALLEL)

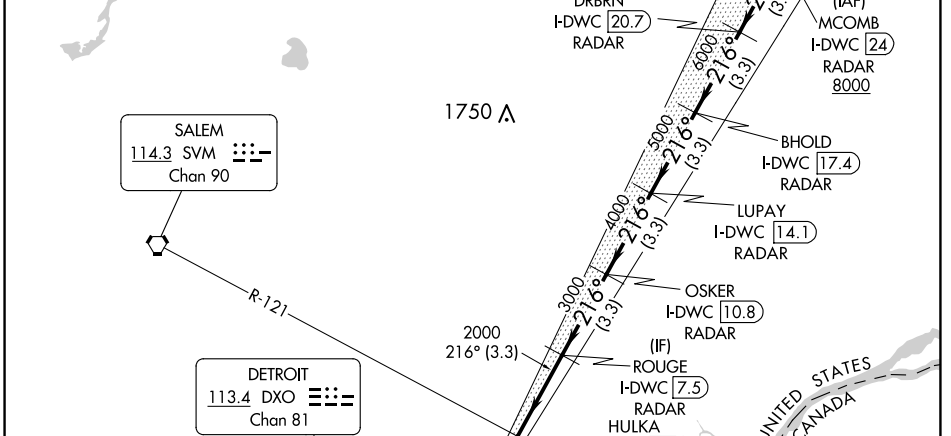
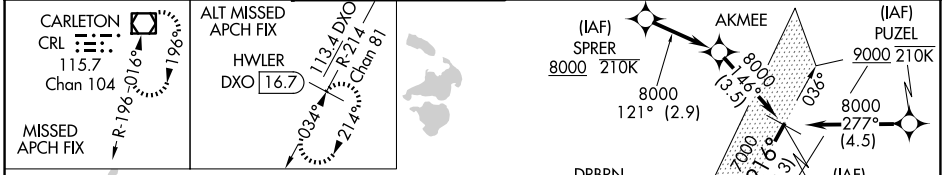
DETROIT METRO WAYNE COUNTY (DTW)

LOC/DME I-DWC <b>110.7</b> Chan <b>44</b>	APP CRS <b>216°</b>	Rwy Idg TDZE Apt Elev <b>12003</b> <b>637</b> <b>645</b>
---	------------------------	---

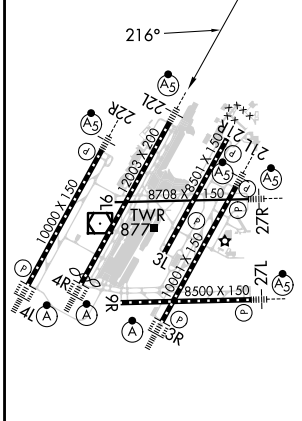
RNAV 1-GPS.  
RNAV 1-DME/DME/IRU or RADAR required for procedure entry. DME or RADAR required.  
Simultaneous approach authorized. Use of FD or AP required during simultaneous operations. Dual VHF comm required. See additional requirements on AAUP. Procedure NA when glide slope not available. \*RVR 1800 authorized with use of FD or AP or HUD to DA.

MALSRL  
MISSED APPROACH:  
Climb to 4000 on heading 216° and CRL VOR/DME R-025 to CRL VOR/DME and hold, continue climb-in-hold to 4000.

D-ATIS <b>133.675</b>	DETROIT APP CON <b>124.05 284.0</b>	METRO TOWER <b>128.125 317.725</b> <b>PRM 135.775</b>	GND CON <b>121.8</b> (NW) <b>119.45</b> (NE) <b>119.25</b> (SE)	CLNC DEL <b>120.65</b>	CPDLC
--------------------------	--	---	--	---------------------------	-------



ELEV 645	TDZE 637
----------	----------



TDZ/CL Rwy's 3R, 4L, 4R and 22R  
REIL Rwy's 3L, 9L, 9R and 21R  
HIRL all runways

4000	CRL R-025	CRL	ROUGE I-DWC 7.5	OSKER I-DWC 10.8	LUPAY I-DWC 14.1	BHOLD I-DWC 17.4	DRBRN I-DWC 20.7	MCOMB I-DWC 24
3000		HULKA I-DWC 4.2						
2000								
I-DWC DME ANTENNA								
hdg 216°								
216°-8000								
GS 2.85° TCH 60								
4.3 NM		3.3 NM		3.3 NM		3.3 NM		3.3 NM
CATEGORY	A		B		C		D	
S-ILS 22L*	837/24		200 (200-1/2)					

EC-1, 15 MAY 2025 to 12 JUN 2025

EC-1, 15 MAY 2025 to 12 JUN 2025