

LOC/DME I-DTW 110.7	APP CRS 036°	Rwy Idg 11494
Chan 44		TDZE 640
		Apt Elev 645

ILS RWY 4R (CAT II & III)

DETROIT METRO WAYNE COUNTY (DTW)

RNAV 1-GPS

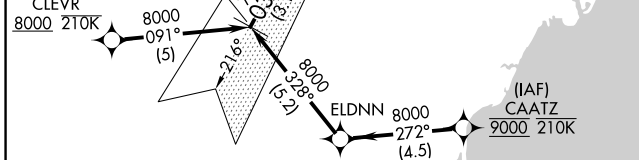
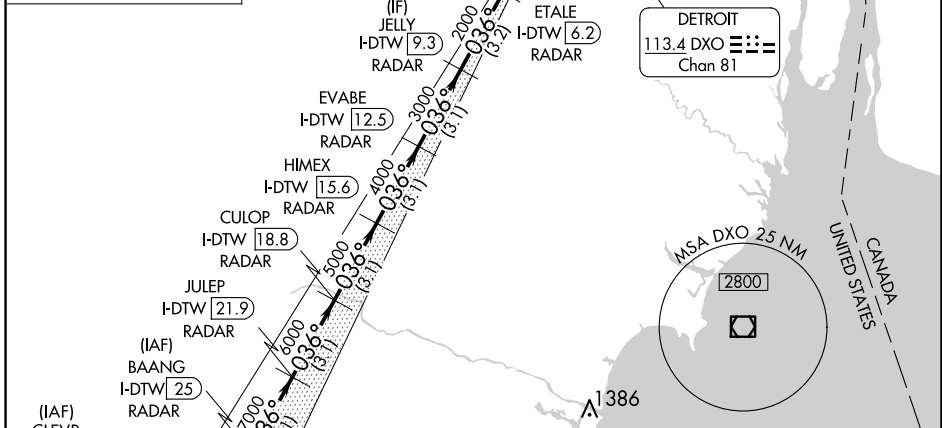
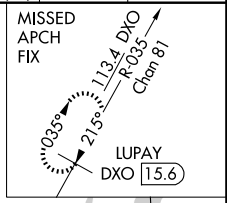
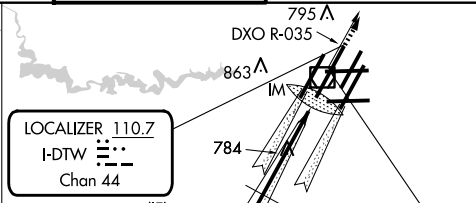
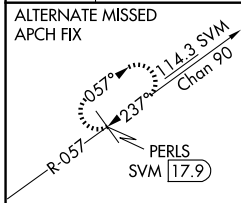
CLEVR, CAATZ and ELDNN: RNAV 1-DME/DME/IRU or GPS required.
 Aircraft not DME/DME/IRU or GPS equipped - RADAR required for procedure entry.
 DME or RADAR required.



MISSED APPROACH: Climb to 4000 on DXO VOR/DME R-035 to LUPAY/DXO VOR/DME/15.6 DME and hold.

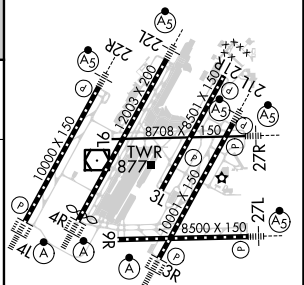
Simultaneous approach authorized.

D-ATIS 133.675	DETROIT APP CON 124.05 284.0	METRO TOWER 128.125 317.725	GND CON 121.8 (NW) 132.725 (SW)	CLNC DEL 119.45 (NE) 119.25 (SE)	CPDLC
--------------------------	--	---------------------------------------	---	--	-------



ELEV 645	TDZE 640
----------	----------

TDZ/CL Rwy's 3R, 4L, 4R and 22R
 REIL Rwy's 3L, 9L, 9R and 21R
 HIRL all runways



BAANG I-DTW (25) RADAR	JULEP I-DTW (21.9) RADAR	CULOP I-DTW (18.8) RADAR	HIMEX I-DTW (15.6) RADAR	EVABE I-DTW (12.5) RADAR	JELLY I-DTW (9.3) RADAR	ETALE I-DTW (6.2) RADAR	DXO R-035	LUPAY DXO (15.6)
8000	7000	6000	5000	4000	3000	2000	765	
GS 3.00° TCH 52								
3.1 NM		3.1 NM		3.1 NM		3.2 NM		-4.1 NM

CATEGORY	A	B	C	D
S-ILS 4R	CAT II RA 104/12 100 DA 740			
S-ILS 4R	CAT III RVR 06			

CATEGORY II & III ILS - SPECIAL AIRCREW & AIRCRAFT CERTIFICATION REQUIRED

EC-1, 15 MAY 2025 to 12 JUN 2025

EC-1, 15 MAY 2025 to 12 JUN 2025