

EC-1, 15 MAY 2025 to 12 JUN 2025

D-ATIS  
133.675  
DETROIT APP CON  
126.225 284.0

NOTE: RADAR required.

NOTE: RNAV 1.

NOTE: DME/DME/IRU or GPS required.

NOTE: Use Rwy 3R Transition or as assigned by ATC.

NOTE: Expect runway assignment from Detroit APP CON

no later than 10 NM from CUUGR.

NOTE: Jet aircraft descend via Mach number until intercepting

280K. Maintain 280K until slowed by the STAR.

NOTE: For use when DTW landing north. When DTW landing

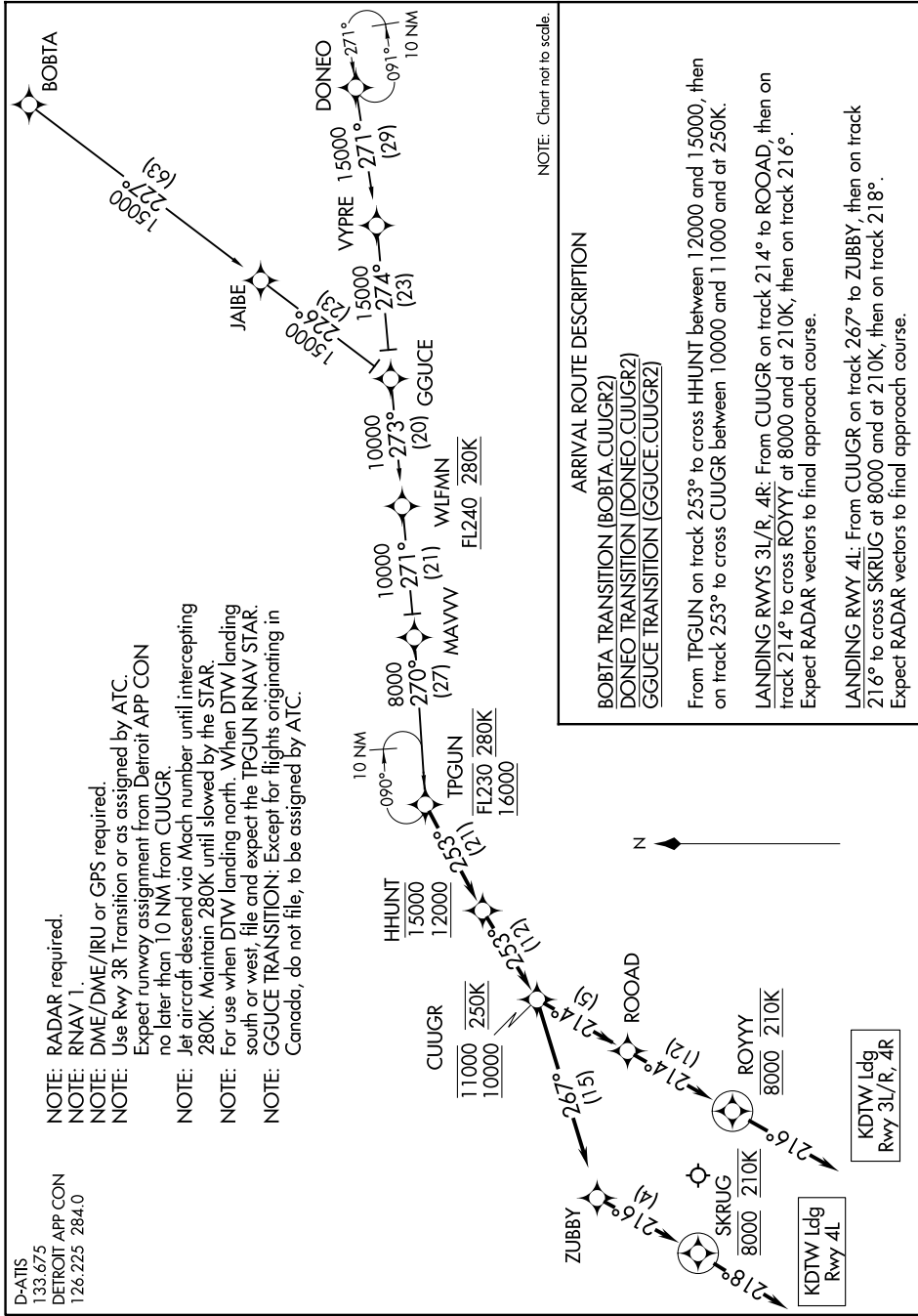
south or west, file and expect the TPGUN RNAV STAR.

NOTE: GGUCE TRANSITION: Except for flights originating in

Canada, do not file, to be assigned by ATC.

CUUGR TWO ARRIVAL (RNAV)

(TPGUN.CUUGR2) 100CT19



NOTE: Chart not to scale.

ARRIVAL ROUTE DESCRIPTION

BOBTA TRANSITION (BOBTA.CUUGR2)

DONEO TRANSITION (DONEO.CUUGR2)

GGUCE TRANSITION (GGUCE.CUUGR2)

From TPGUN on track 253° to cross HHUNT between 12000 and 15000, then on track 253° to cross CUUGR between 10000 and 11000 and at 250K.

LANDING RWYS 3L/R, 4R: From CUUGR on track 214° to ROOAD, then on track 214° to cross ROYYY at 8000 and at 210K, then on track 216°.

Expect RADAR vectors to final approach course.

LANDING RWY 4L: From CUUGR on track 267° to ZUBBY, then on track 216° to cross SKRUG at 8000 and at 210K, then on track 218°.

Expect RADAR vectors to final approach course.

EC-1, 15 MAY 2025 to 12 JUN 2025