

DEL RIO, TEXAS

# RNAV (GPS) B

APCH CRS <b>340°</b>	Rwy Idg TDZE Arprt Elev	N/A N/A <b>1082</b>
-------------------------	-------------------------------	---------------------------

- (USAF)

LAUGHLIN AFB (KDLF)

RNP APCH - GPS  
RADAR required  
\* Circling not authorized in sector NE of Rwy 13R-31L.

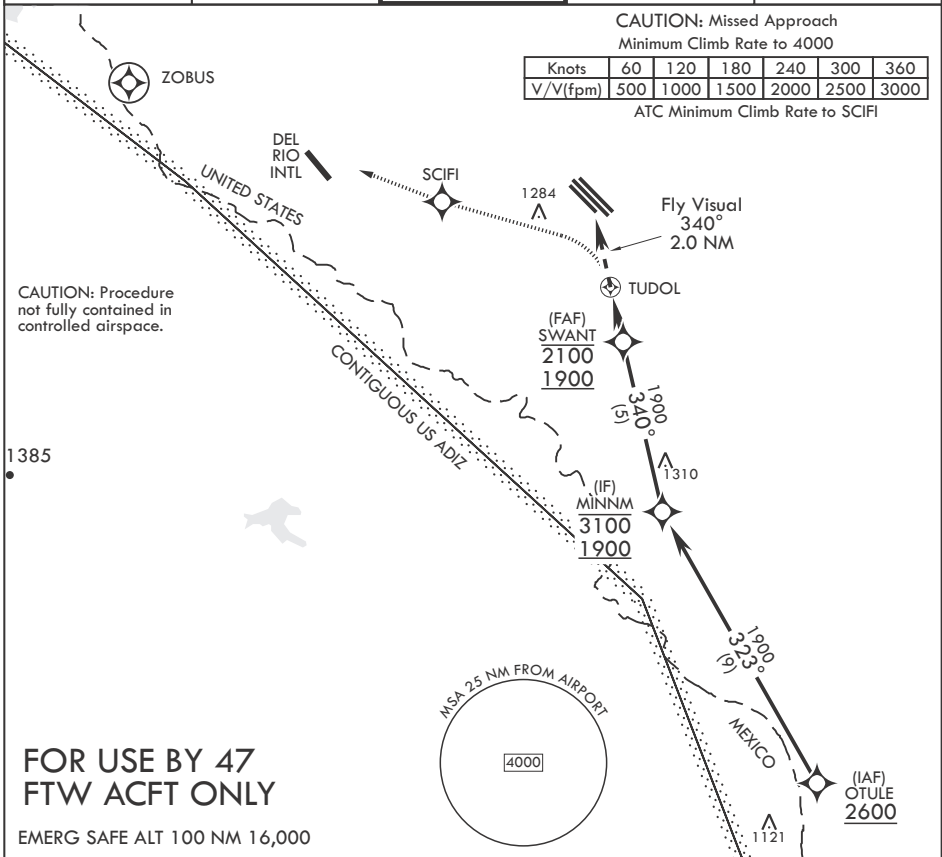
MISSED APPROACH: Climbing left turn to 4000 direct ZOBUS, cross SCIFI at 4000, expect radar vectors.

ATIS* <b>114.4 269.9</b>	DEL RIO APP CON <b>119.6 259.1</b>	TOWER* <b>125.2 307.375</b>	GND CON <b>275.8</b>	CLNC DEL <b>120.5 335.8</b>
-----------------------------	---------------------------------------	--------------------------------	-------------------------	--------------------------------

CAUTION: Missed Approach  
Minimum Climb Rate to 4000

Knots	60	120	180	240	300	360
V/V(fpm)	500	1000	1500	2000	2500	3000

ATC Minimum Climb Rate to SCIFI

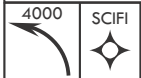


SC-3, 15 MAY 2025 to 12 JUN 2025

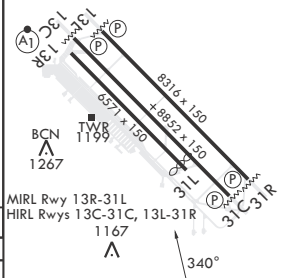
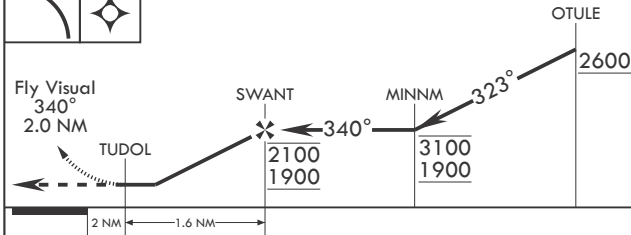
SC-3, 15 MAY 2025 to 12 JUN 2025

## FOR USE BY 47 FTW ACFT ONLY

EMERG SAFE ALT 100 NM 16,000



ELEV 1082 Rwy 31L Idg 6241'



CATEGORY	A	B	C	D
<b>C</b> CIRCLING*	1600-3	518	(1000-3)	NA

DEL RIO, TEXAS

29°22'N - 100°47'W

LAUGHLIN AFB (KDLF)

Amdt 6 07SEP23

# RNAV (GPS) B