

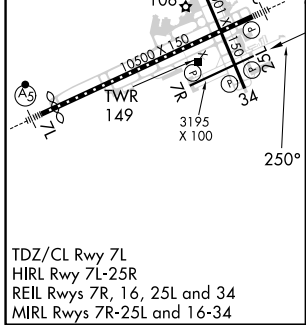
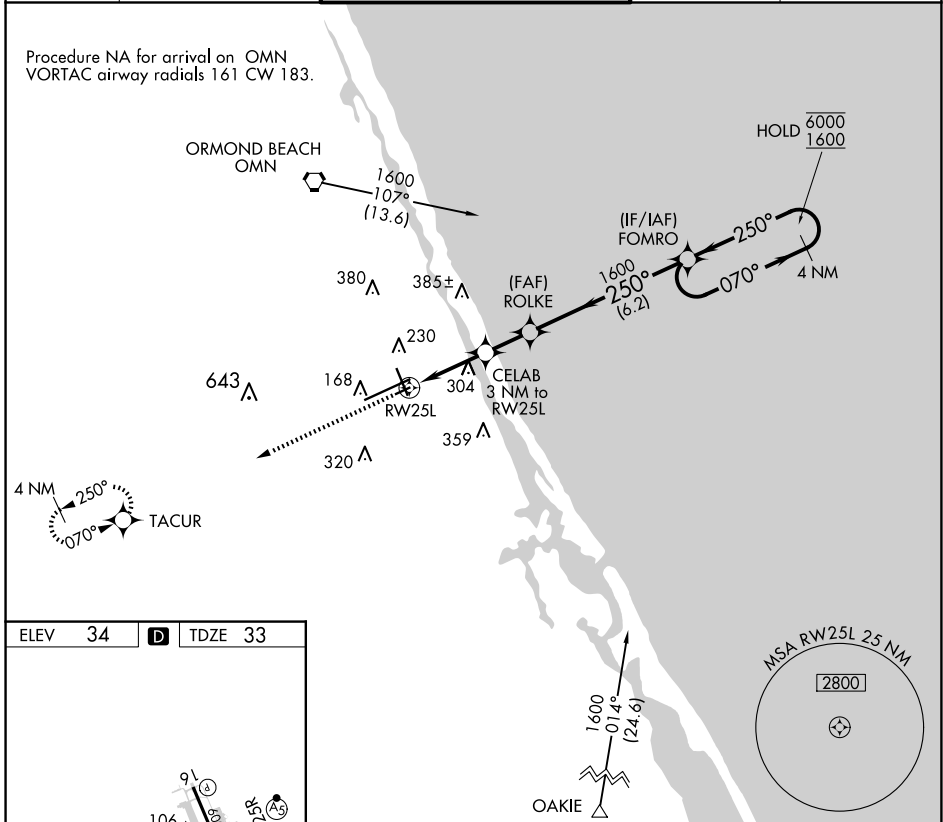
APP CRS	Rwy Idg	3195
250°	TDZE	33
	Apt Elev	34

RNAV (GPS) RWY 25L

DAYTONA BEACH INTL (DAB)

RNP APCH-GPS.		MISSED APPROACH: Climb to 1700 direct TACUR and hold.	
Rwy 25L helicopter visibility reduction below 3/4 SM NA.			

ATIS	DAYTONA APP CON	DAYTONA TOWER	GND CON	CLNC DEL
132.875	125.8 269.075	120.7 257.8	121.9 348.6	119.3



ELEV 34	D	TDZE 33		
TACUR 1700		ROLKE 1600 CELAB 3.04° 3 NM to TCH 32 RWY 25L 1020 1.5 NM to RWY 25L	FOMRO 1600 4 NM Holding Pattern 070° → 6000 ← 250° 1600	MSA RWY 25L 25 NM 2800
VGSI and descent angles not coincident (VGSI Angle 3.00/TCH 44).				
CATEGORY	A	B	C	D
LNAV MDA	560-1	527 (600-1)	560-1½ 527 (600-1½)	NA

SE-3, 15 MAY 2025 to 12 JUN 2025

SE-3, 15 MAY 2025 to 12 JUN 2025