

RNAV (GPS) RWY 5L

APCH CRS	Rwy Idg	12,600
053°	TDZE	803
	Arprt Elev	823

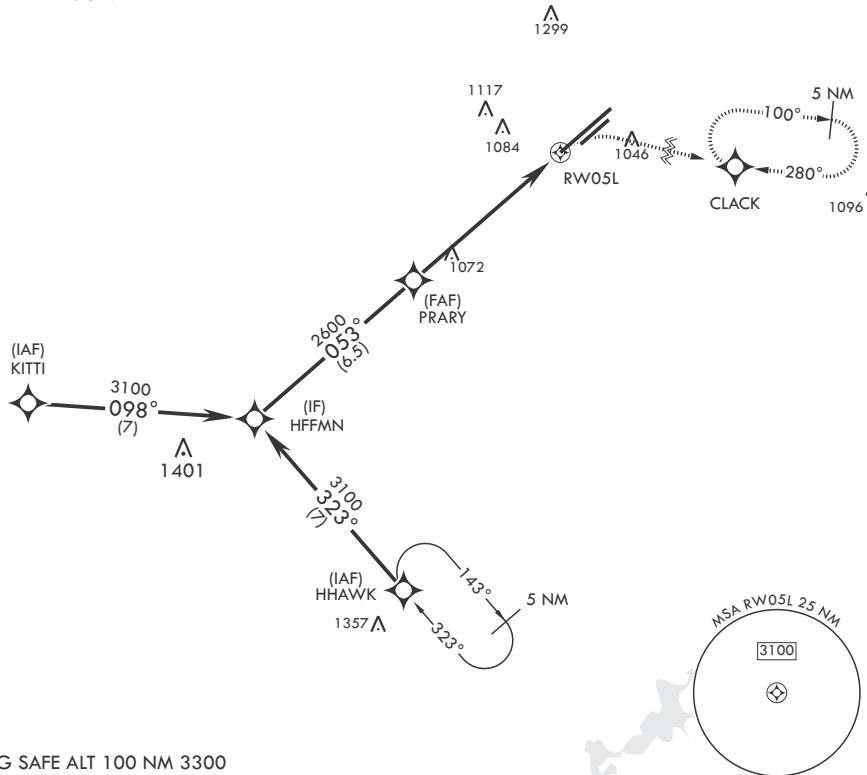
- (USAF)

WRIGHT PATTERSON AFB (KFFO)

<p>▼ * When ALS inop increase CAT AB RVR to 55, vis to 1 mile; CAT CD vis to 1 5/8 miles. ** When Rwy 23R VGSI inop, circling to Rwy 23R NA at night.</p>	<p>ALSF-1</p>	<p>MISSED APPROACH: Turn right climb to 3100 direct CLACK WPT and hold.</p>
---	---------------	---

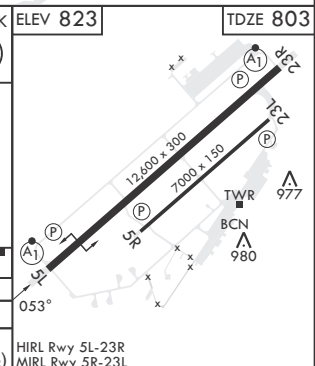
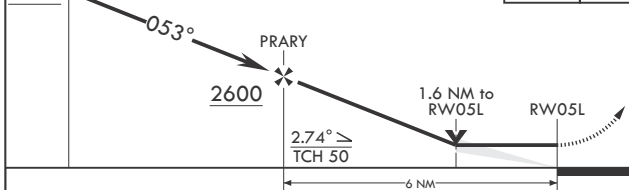
<p>ATIS</p> <p>124.475 269.9</p>	<p>COLUMBUS APP CON/DEP CON</p> <p>118.85 269.275</p>	<p>PATTERSON TOWER</p> <p>127.8 281.45</p>	<p>GND CON</p> <p>121.8 335.8</p>
----------------------------------	---	--	-----------------------------------

DME/DME RNP-0.3 NA



EMERG SAFE ALT 100 NM 3300

HFFMN	3100	053°	PRARY	2600	1.6 NM to RW05L	RW05L	CLACK	ELEV 823	TDZE 803
-------	------	------	-------	------	-----------------	-------	-------	----------	----------



CATEGORY	A	B	C	D
LNAV MDA*	1380/24	577 (600-½)	1380-1¼	577 (600-1¼)
CIRCLING**	1380-1 557 (600-1)	1440-1 617 (700-1)	1560-2 737 (800-2)	1620-2½ 797 (800-2½)

HIRL Rwy 5L-23R
MIRL Rwy 5R-23L

RNAV (GPS) RWY 5L

EC-2, 15 MAY 2025 to 12 JUN 2025

EC-2, 15 MAY 2025 to 12 JUN 2025