

DAYTON, OHIO

ILS or LOC RWY 5L

LOC I-FAE 109.7	APCH CRS 053°	Rwy Idg 12,600
		TDZE 803
		Arprt Elev 823

[USAF]

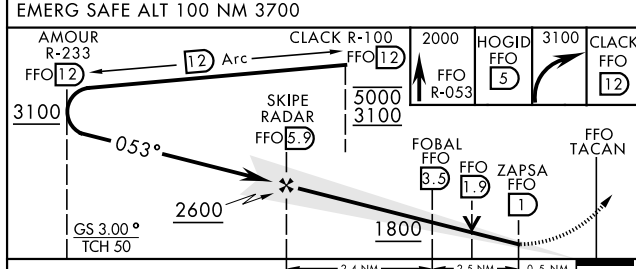
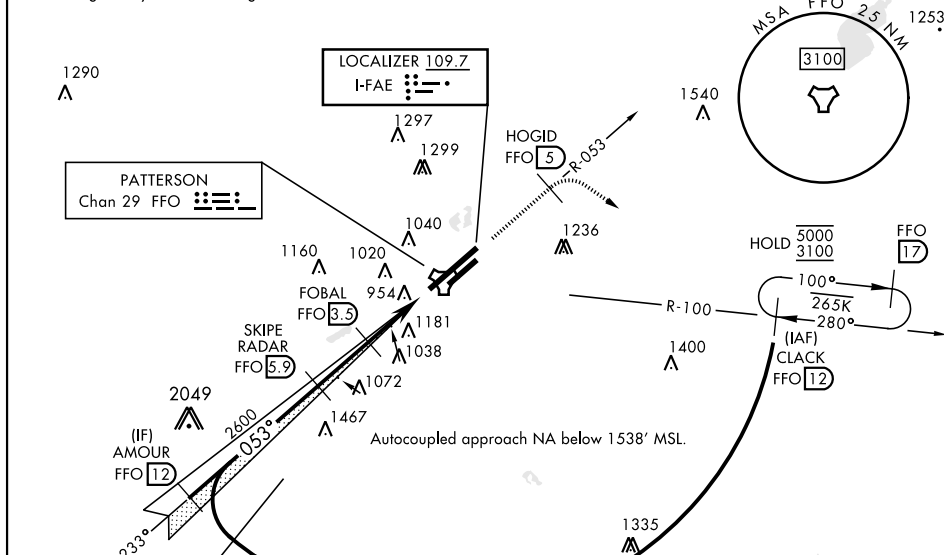
WRIGHT-PATTERSON AFB (KFFO)

DME or RADAR required for Localizer.
 * When ALS inop, increase RVR to 40 and vis to 3/4 mile.

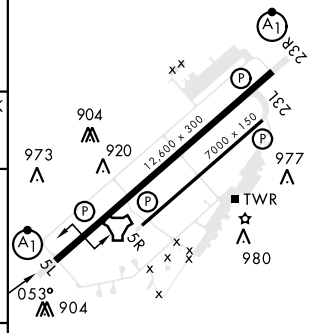
ALSF-1 MISSED APPROACH: Climb to 2000 via FFO R-053 at 5 DME, turn right direct CLACK climbing to 3100 and hold.

ATIS 124.475 269.9	COLUMBUS APP CON 118.85 269.275	PATTERSON TOWER 127.8 281.45	GND CON 121.8 335.8
------------------------------	---	--	-------------------------------

** When ALS inop, increase CAT AB RVR to 55 and vis to 1 mile, CAT CDE vis to 1 1/2 miles.
 *** When Rwy 23R VGSI inop, circling to Rwy 23R NA at night.
 † Missed approach requires use of RNAV or ATC RADAR monitoring.



ELEV	823	TDZE	803
------	-----	------	-----



CATEGORY	A	B	C	D	E
S-ILS 5L*	1003/24		200	(200-1/2)	
S-LOC 5L**	1280/24	476 (500-1/2)	1280/50	476 (500-1)	
CIRCLING***	1380-1 557 (600-1)	1440-1 617 (700-1)	1560-2 737 (800-2)	1620-2 1/2 797 (800-2 1/2)	1620-2 3/4 797 (800-2 3/4)

HIRL Rwy 5L-23R	1038
MIRL Rwy 5R-23L	▲
FAF to MAP 4.9 NM	
Knots	60 90 120 150 180
Min:Sec	4:54 3:16 2:27 1:58 1:38

DAYTON, OHIO
Amdt 4 28DEC23

39° 50'N-84° 03'W

WRIGHT-PATTERSON AFB (KFFO)

ILS or LOC RWY 5L

EC-2, 15 MAY 2025 to 12 JUN 2025

EC-2, 15 MAY 2025 to 12 JUN 2025