

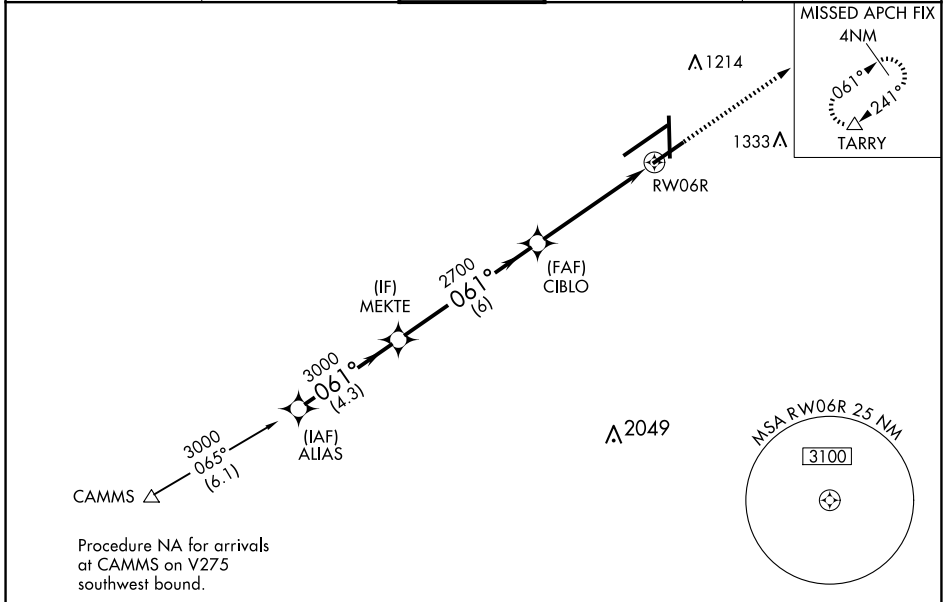
WAAS CH 90414 W06B	APP CRS 061°	Rwy Idg TDZE Apt Elev	7001 1009 1009
--	------------------------	-----------------------------	---

RNAV (GPS) RWY 6R

JAMES M COX DAYTON INTL (DAY)

RNP APCH - GPS.	<p>▼ For uncompensated Baro-VNAV systems, LNAV/VNAV NA below -19°C or above 54°C. Rwy 6R helicopter visibility reduction below 3/4 SM NA. Simultaneous approach authorized. LNAV procedure NA during simultaneous operations. Use of FD or AP required during simultaneous operations.</p>	<p>MISSED APPROACH: Climb to 3000 direct TARRY and hold.</p>
-----------------	--	--

ATIS 125.8	COLUMBUS APP CON 134.45 323.15	DAYTON TOWER 119.9 257.7	GND CON 121.9	CLNC DEL 121.75
----------------------	--	------------------------------------	-------------------------	---------------------------



EC-2, 15 MAY 2025 to 12 JUN 2025

EC-2, 15 MAY 2025 to 12 JUN 2025

<p>VGSI and RNAV glidepath not coincident (VGSI Angle 3.00/TCH 50).</p>		<p>3000 TARRY</p>		
<p>ALIAS MEKTE CIBLO RWY 6R</p> <p>3000 061° 3000 061° 2700 1.5 NM to RWY 6R</p> <p>GP 3.00° TCH 53</p> <p>4.3 NM 6 NM 3.6 NM 1.5 NM</p>				
CATEGORY	A	B	C	D
LPV DA		1259-3/4	250 (300-3/4)	
LNAV/VNAV DA		1496-13/4	487 (500-13/4)	
LNAV MDA	1520-1	511 (600-1)	1520-1 1/2 511 (600-1 1/2)	1520-1 3/4 511 (600-1 3/4)
CIRCLING	1580-1	571 (600-1)	1580-1 1/2 571 (600-1 1/2)	1640-2 631 (700-2)

