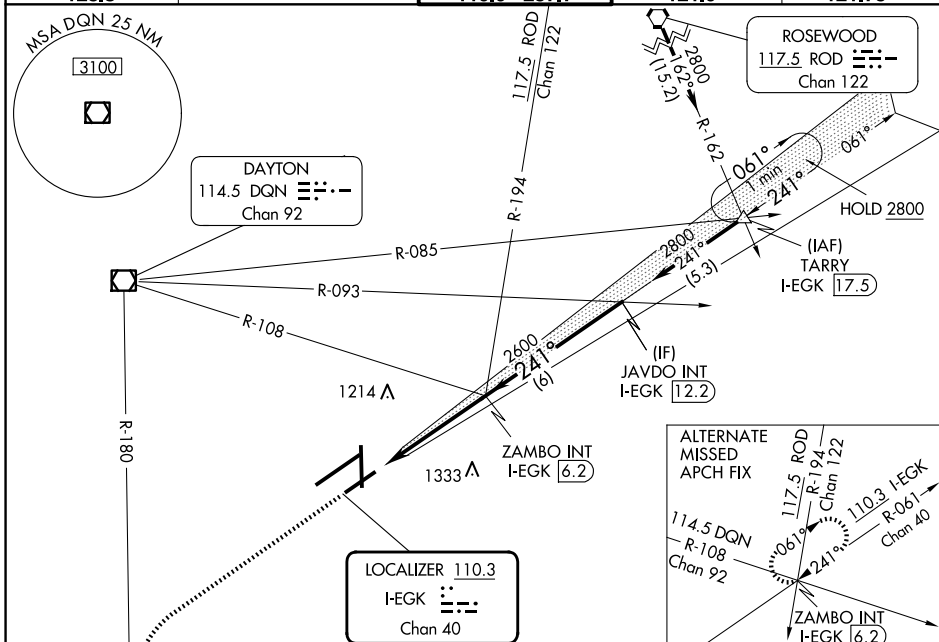


LOC I-EGK 110.3 Chan 40	APP CRS 241°	Rwy ldg TDZE Apt Elev 7001 1007 1009
--------------------------------------	------------------------	--

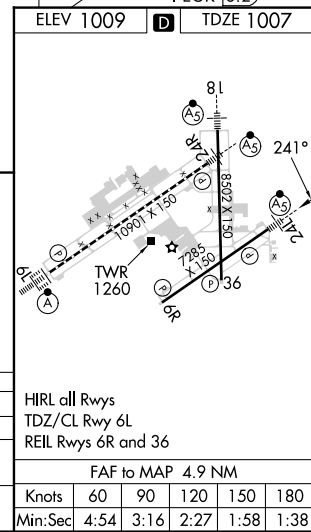
ILS or LOC RWY 24L

JAMES M COX DAYTON INTL (DAY)

DME required.		MALSR 	MISSED APPROACH: Climb to 3000 on heading 241° and DQN R-180 to MIMMS/DQN 18 DME and hold.	
ATIS 125.8	COLUMBUS APP CON 134.45 323.15	DAYTON TOWER 119.9 257.7	GND CON 121.9	CLNC DEL 121.75



3000 ↑ hdg 241°	DQN R-180	MIMMS DQN 18	VGSI and ILS glidepath not coincident (VGSI Angle 3.00/TCH 54).	
*LOC only.	*I-EGK 2.6	ZAMBO INT I-EGK 6.2	JAVDO INT I-EGK 12.2	2800
1.2 NM		3.7 NM	6 NM	GS 3.00° TCH 50
CATEGORY	A	B	C	D
S-ILS 24L #	1207/24		200 (200-½)	
S-LOC 24L	1440/24 433 (500-½)		1440/40 433 (500-¾)	
CIRCLING	1580-1 571 (600-1)		1580-1½ 631 (700-2)	



EC-2, 15 MAY 2025 to 12 JUN 2025

EC-2, 15 MAY 2025 to 12 JUN 2025