


APP CRS	Rwy Idg	7352
133°	TDZE	485
	Apt Elev	487

RNAV (RNP) W RWY 13L

DALLAS LOVE FLD (DAL)

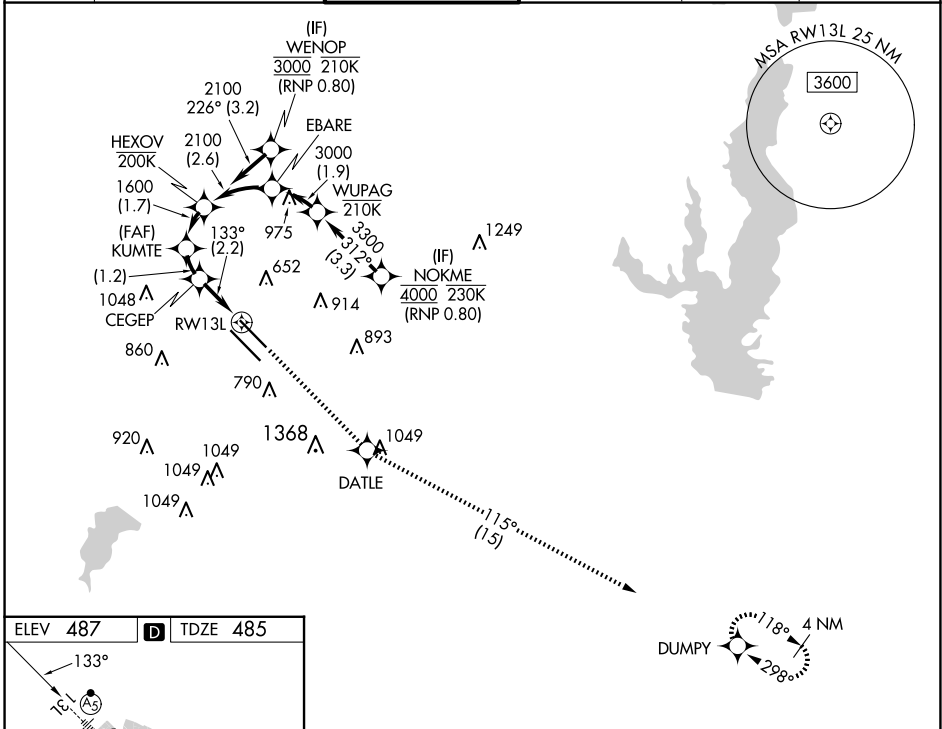
RNP AR APCH. RF required.

Simultaneous approach authorized. For uncompensated Baro-VNAV systems, procedure NA below -6°C or above 54°C. For inop ALS, increase RNP 0.11 all Cats visibility to RVR 4500.

MALSR 

MISSED APPROACH: Climb to 3000 direct DATLE and on track 115° to DUMPY and hold.

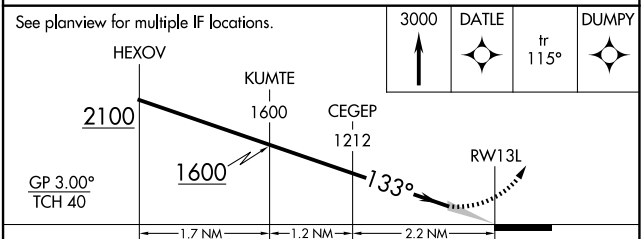
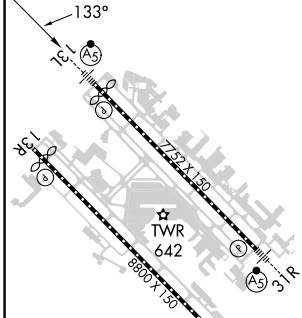
D-ATIS 120.15	LONE STAR APP CON NORTH 124.3 282.275 SOUTH 125.2 343.65	LOVE TOWER 123.7 239.3	GND CON 121.75 348.6	CLNC DEL 127.9	CPDLC
-------------------------	--	----------------------------------	--------------------------------	--------------------------	-------



SC-2, 15 MAY 2025 to 12 JUN 2025

SC-2, 15 MAY 2025 to 12 JUN 2025

ELEV 487	D	TDZE 485
-----------------	----------	-----------------



CATEGORY	A	B	C	D
RNP 0.11 DA		754/24	269 (300-½)	
RNP 0.30 DA		846/40	361 (400-¾)	

TDZ/CL Rwy 13L and 31L
HIRL Rwy 13L-31R, and 13R-31L

RNAV (RNP) W RWY 13L