

DRYYE TWO ARRIVAL (RNAV)

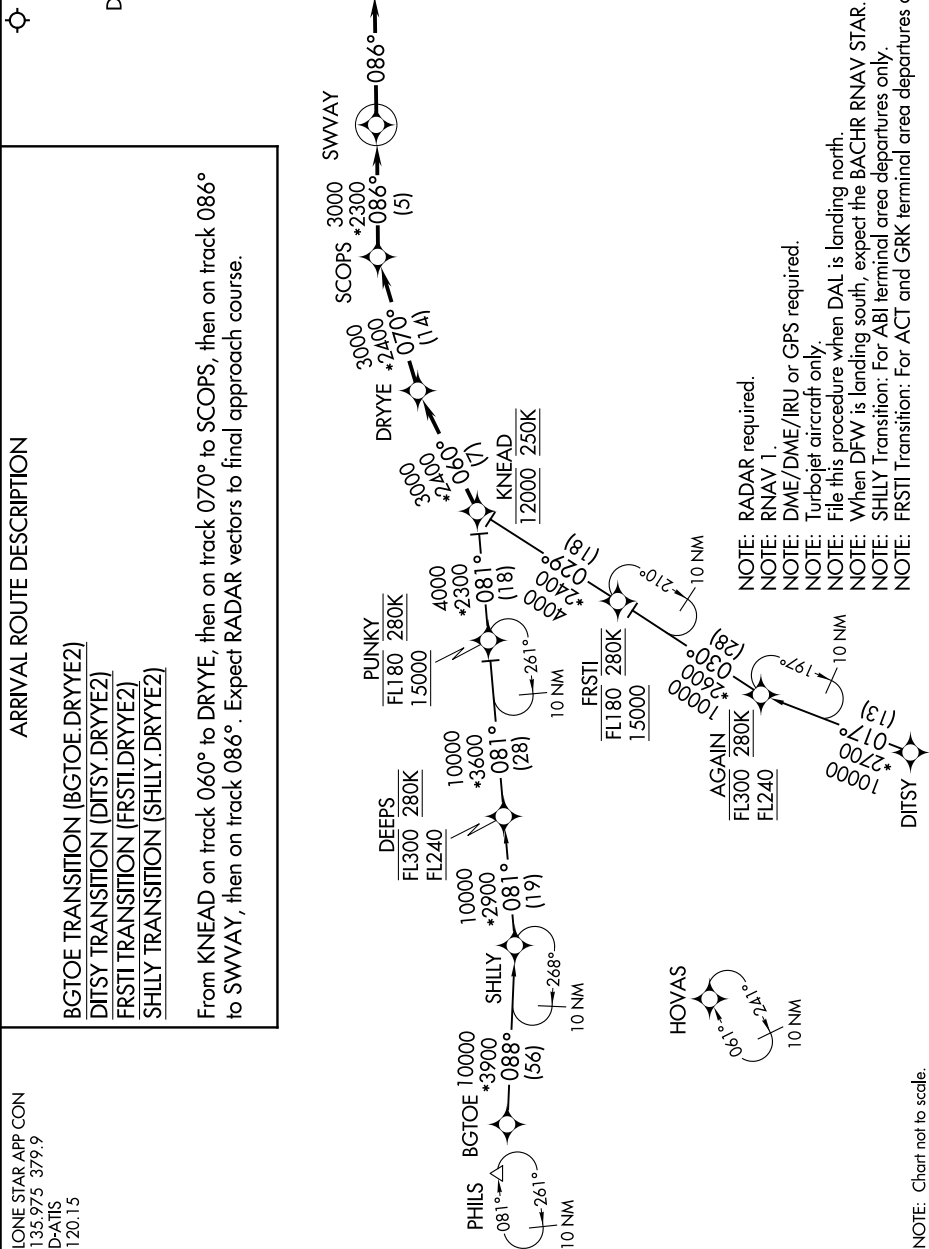
SC-2, 15 MAY 2025 to 12 JUN 2025

ARRIVAL ROUTE DESCRIPTION

- BGTOE TRANSITION (BGTOE.DRYYE2)
- DITSY TRANSITION (DITSY.DRYYE2)
- FRSTI TRANSITION (FRSTI.DRYYE2)
- SHILLY TRANSITION (SHILLY.DRYYE2)

From KNEAD on track 060° to DRYYE, then on track 070° to SCOPES, then on track 086° to SWWAY, then on track 086°. Expect RADAR vectors to final approach course.

LONE STAR APP CON
133.975 379.9
D-ATIS
120.15



- NOTE: RADAR required.
- NOTE: RNAV 1.
- NOTE: DME/DME/IRU or GPS required.
- NOTE: Turbojet aircraft only.
- NOTE: File this procedure when DAL is landing north.
- NOTE: When DFW is landing south, expect the BACHR RNAV STAR.
- NOTE: SHILLY Transition: For ABI terminal area departures only.
- NOTE: FRSTI Transition: For ACT and GRK terminal area departures only.

NOTE: Chart not to scale.

DRYYE TWO ARRIVAL (RNAV)

(KNEAD.DRYYE2) 22JUN17

SC-2, 15 MAY 2025 to 12 JUN 2025