

WAAS CH 82529 W03A	APP CRS 026°	Rwy Idg TDZE Apt Elev	5465 1503 1503
---------------------------------	------------------------	-----------------------------	---

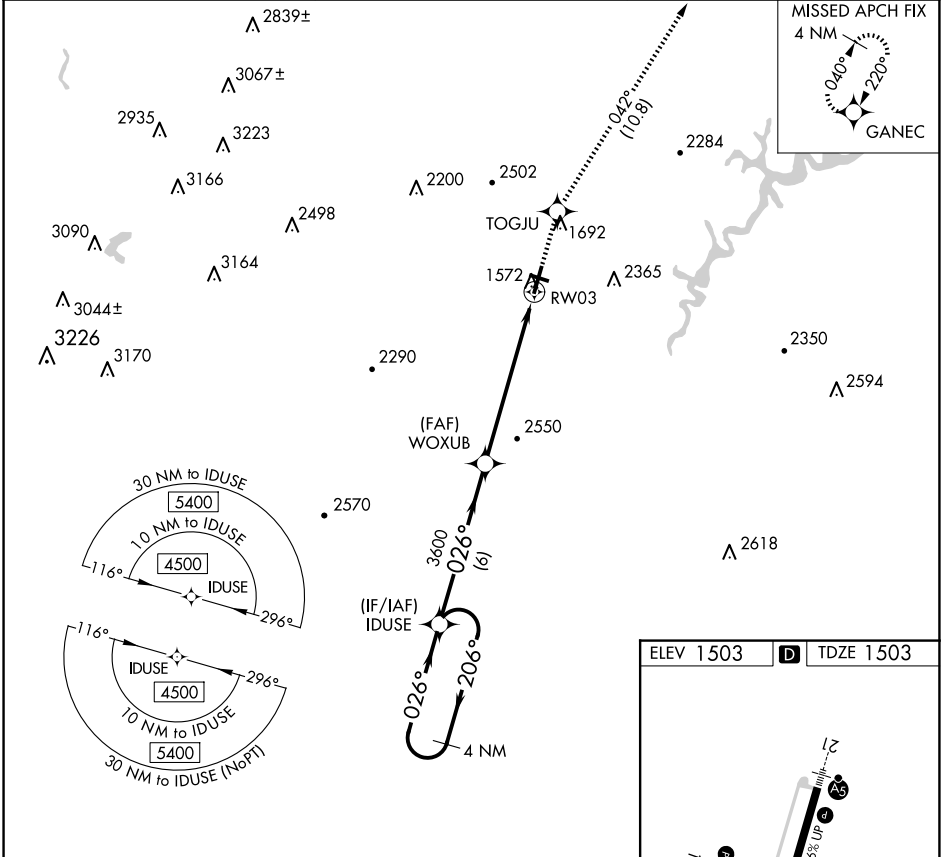
RNAV (GPS) Z RWY 3

ALTOONA/BLAIR COUNTY (A00)

⚠ Rwy 3 helicopter visibility reduction below 3/4 SM NA. DME/DME RNP-0.3 NA. When local altimeter setting not received, use Bedford County altimeter setting and increase all DA 84 feet, and increase all visibilities 3/8 mile.

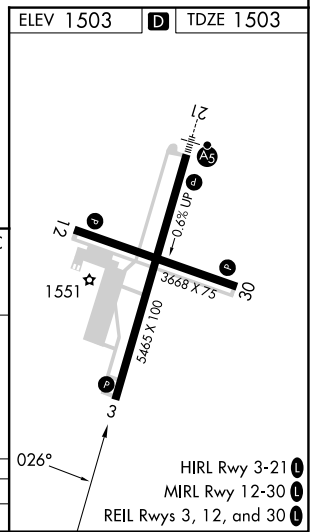
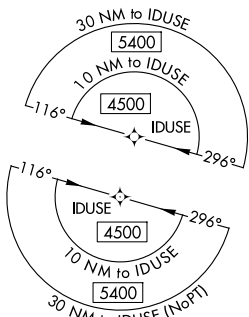
MISSED APPROACH: Climb to 5000 direct TOGJU and on track 042° to GANEC and hold, continue climb-in-hold to 5000.

ASOS 127.125	JOHNSTOWN APP CON ★ 121.2 299.2	CTAF 123.60
------------------------	---	-----------------------



NE-4, 15 MAY 2025 to 12 JUN 2025

NE-4, 15 MAY 2025 to 12 JUN 2025



4 NM Holding Pattern IDUSE		5000 TOGJU		GANEC	
4500 ← 206°		↑		tr 042°	
GP 3.00° TCH 55		WOXUB 3600		RWY 3	
6 NM		6.4 NM			
CATEGORY	A	B	C	D	
LPV DA		1828-1	325 (400-1)		