

# TACAN X RWY 31L

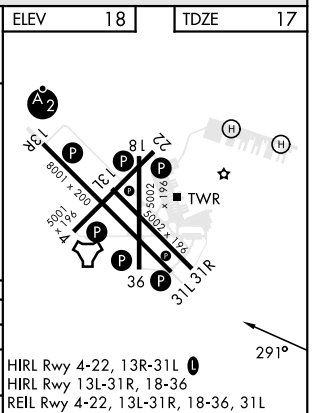
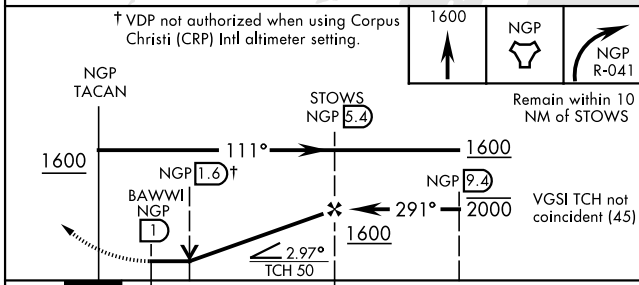
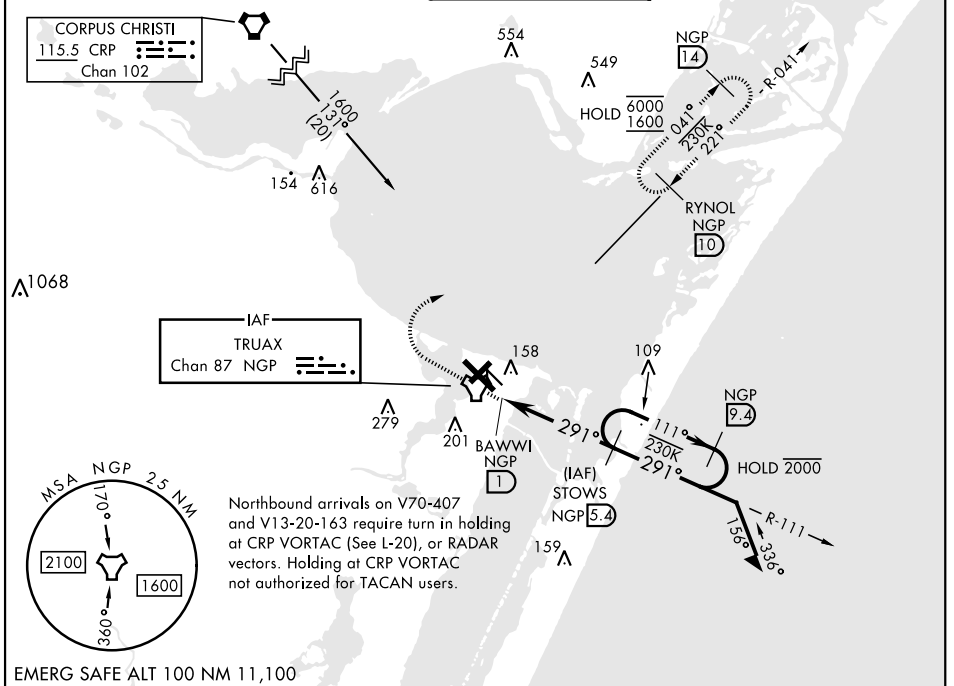
TACAN NGP Chan <b>87</b>	APCH CRS <b>291°</b>	Rwy Idg TDZE Arpt Elev <b>8001</b> <b>17</b> <b>18</b>
-----------------------------	-------------------------	---

[USN]

CORPUS CHRISTI NAS (TRUAX FLD) (KNGP)

**▼** When local altimeter setting not received, use Corpus Christi (CRP) Intl altimeter setting. **MISSED APPROACH:** Climb to 1600 direct NGP TACAN and turn right to intercept R-041 and hold.

ATIS ★ <b>127.9 290.9</b>	APP CON <b>128.675 343.75</b>	NAVY CORPUS TOWER ★ <b>134.85 340.2</b>	GND CON <b>118.7 257.85</b>	CLNC DEL <b>314.3</b>	ASR/PAR
------------------------------	----------------------------------	--	--------------------------------	--------------------------	---------



CATEGORY	A	B	C	D
S-31L	420-1 403 (500-1)	420-1½ 403 (500-1½)		
<b>CIRCLING</b>	460-1 442 (500-1)	480-1 462 (500-1)	520-1½ 502 (600-1½)	580-2 562 (600-2)
CORPUS CHRISTI (CRP) INTL ALTIMETER SETTING				
S-31L	460-1 443 (500-1)	460-1½ 443 (500-1½)		
<b>CIRCLING</b>	500-1 482 (500-1)	540-1½ 522 (600-1½)	620-2 602 (700-2)	

FAF to MAP 4.4 NM					
Knots	60	90	120	150	180
Min:Sec	4:24	2:56	2:12	1:46	1:28

# TACAN X RWY 31L

SC-3, 15 MAY 2025 to 12 JUN 2025

SC-3, 15 MAY 2025 to 12 JUN 2025