

CORPUS CHRISTI, TEXAS

RNAV (GPS) RWY 13L

CORPUS CHRISTI NAS (TRUAX FLD) (KNGP)

[USN]

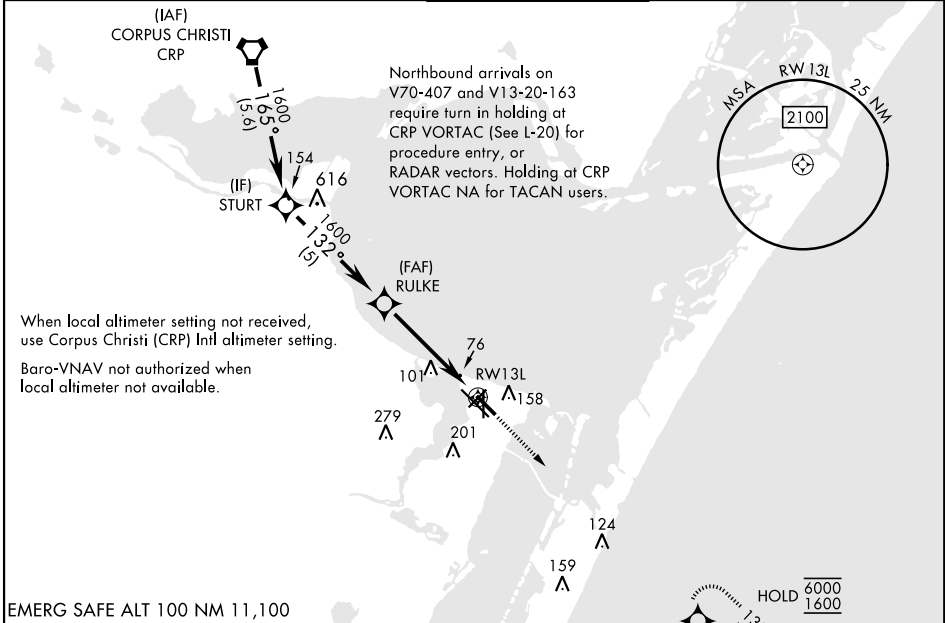
APCH CRS	Rwy Idg	5002
132°	TDZE	18
	Arprt Elev	18

RNP APCH

▼ For uncompensated Baro-VNAV systems, LNAV/VNAV NA below -15° C (5° F) or above 54° C (129° F).

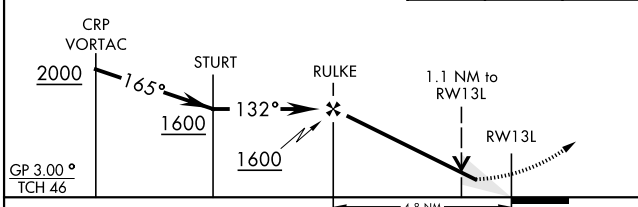
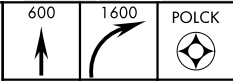
MISSED APPROACH: Climb to 600, then climbing right turn to 1600 direct POLCK and hold.

ATIS ★	APP CON	NAVY CORPUS TOWER ★	GND CON	CLNC DEL	ASR/PAR
127.9 290.9	128.675 343.75	134.85 0 340.2	118.7 257.85	314.3	

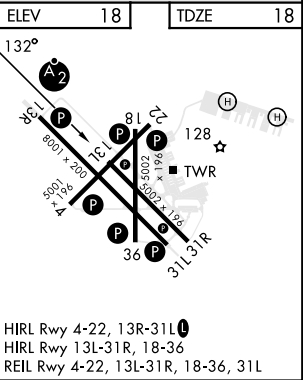


EMERG SAFE ALT 100 NM 11,100

VDP not authorized when using Corpus Christi (CRP) Intl altimeter setting.



CATEGORY	A	B	C	D
LNAV/VNAV DA	268-1		250	(300-1)
LNAV MDA	400-1	382 (400-1)	400-1½	382 (400-1½)
CIRCLING	460-1 442 (500-1)	480-1 462 (500-1)	520-1½ 502 (600-1½)	580-2 562 (600-2)
CORPUS CHRISTI (CRP) INTL ALTIMETER SETTING				
LNAV MDA	420-1	402 (500-1)	420-1½	402 (500-1½)
CIRCLING	500-1	482 (500-1)	540-1½ 522 (600-1½)	620-2 602 (700-2)



CORPUS CHRISTI, TEXAS
Amdt 2 30NOV23

27°42'N-97°17'W

CORPUS CHRISTI NAS (TRUAX FLD) (KNGP)

RNAV (GPS) RWY 13L

SC-3, 15 MAY 2025 to 12 JUN 2025

SC-3, 15 MAY 2025 to 12 JUN 2025