

# RNAV (RNP) Z RWY 28L

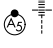
JOHN GLENN COLUMBUS INTL (CMH)

APP CRS <b>281°</b>	Rwy Idg TDZE Apt Elev	<b>10113</b> <b>815</b> <b>815</b>
------------------------	-----------------------------	--

**RNP AR APCH.**

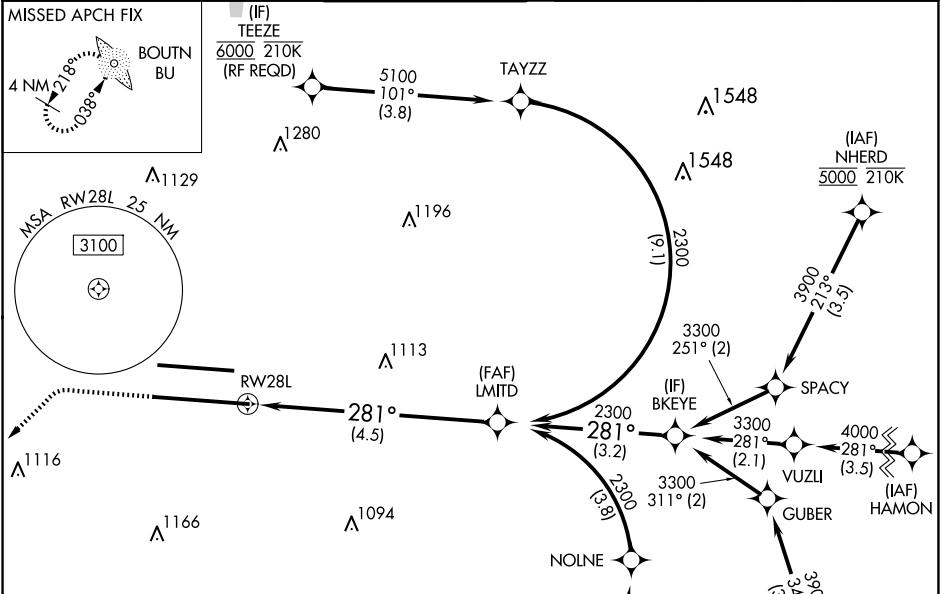
**▽** For uncompensated Baro-VNAV systems, procedure NA below -19°C or above 54°C. For inop ALS, increase RNP 0.30 all Cats visibility to 1 3/8 SM. Simultaneous approach authorized.

**MALS R**



**MISSED APPROACH:**  
Climb to 1400 then climbing left turn to 3000 direct BOUTN LOM and hold.

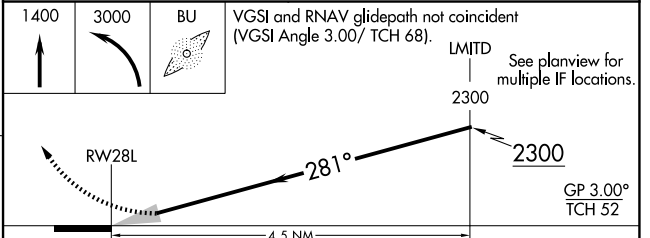
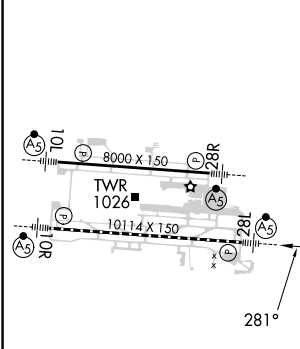
D-ATIS <b>124.6</b>	COLUMBUS APP CON <b>125.95 371.975</b>	COLUMBUS TOWER <b>132.7 257.8</b>	GND CON <b>121.9 348.6</b>	CLNC DEL <b>126.3</b>	CPDLC
------------------------	---	--------------------------------------	-------------------------------	--------------------------	-------



EC-2, 15 MAY 2025 to 12 JUN 2025

EC-2, 15 MAY 2025 to 12 JUN 2025

ELEV 815	<b>D</b>	TDZE 815
----------	----------	----------



CATEGORY	A	B	C	D
RNP 0.17 DA		1147/26	332 (400-1/2)	
RNP 0.30 DA		1314/50	499 (500-1)	

## AUTHORIZATION REQUIRED