

COLUMBUS, MISSISSIPPI

RNAV (GPS) RWY 31C

WAAS CH 89580 W31A	APCH CRS 315°	Rwy ldg TDZE 213	12,004 218
---------------------------------	-------------------------	----------------------------	----------------------

AL-91 (USAF)

COLUMBUS AFB (KCBM)

RNP APCH

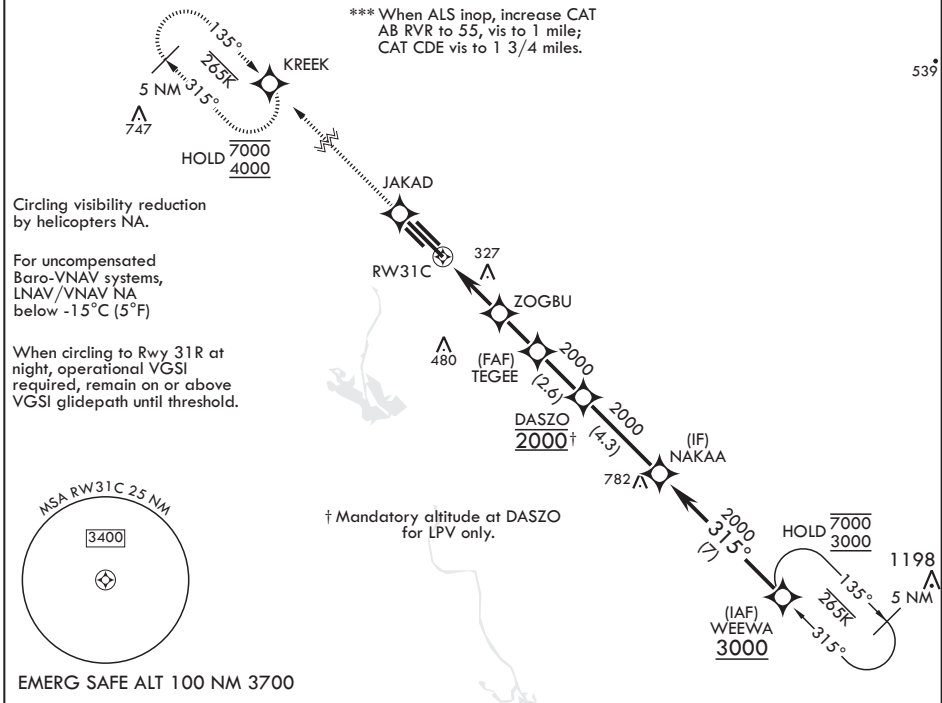
ALSIF-1

MISSED APPROACH: Climb to 4000 direct JAKAD, direct KREEK and hold.

▼ * When ALS inop increase RVR to 40, vis to ¼ mile.
** When ALS inop, increase vis to 1 3/8 miles.



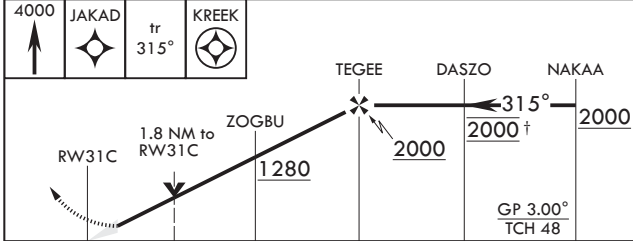
ATIS* 115.2 273.5	APP CON* 126.075 239.25 N 134.55 350.3 SE 135.6 323.275 SW	TOWER* 126.65 379.925	GND CON* 121.9 275.8	CLNC DEL* 269.55
-----------------------------	--	---------------------------------	--------------------------------	----------------------------



539

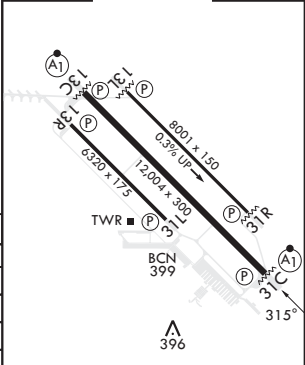
SC-4, 15 MAY 2025 to 12 JUN 2025

SC-4, 15 MAY 2025 to 12 JUN 2025



ELEV 218	TDZE 213
----------	----------

CATEGORY	A	B	C	D	E
LPV DA*	413/24		200	(200-½)	
LNAV/VNAV DA**	671/45		458	(500-¾)	
LNAV MDA***	840/24	627 (700-½)	840-1¼	627 (700-1¾)	
C CIRCLING	840-1	622 (700-1)	840-1¼	880-2	1240-3
			622 (700-1¼)	662 (700-2)	1022 (1100-3)



HIRL Rwy's 13C-31C, 13L-31R
MIRL Rwy 13R-31L

COLUMBUS, MISSISSIPPI

33°39'N - 88°27'W

COLUMBUS AFB (KCBM)

Amdt 4 07SEP23

RNAV (GPS) RWY 31C