

COLUMBUS, MISSISSIPPI

RNAV (GPS) RWY 13C

WAAS CH 53183 W13A	APCH CRS 135°	Rwy ldg 12,004	TDZE 196
		Arpt Elev 218	

AL-91 (USAF)

COLUMBUS AFB (KCBM)

RNP APCH

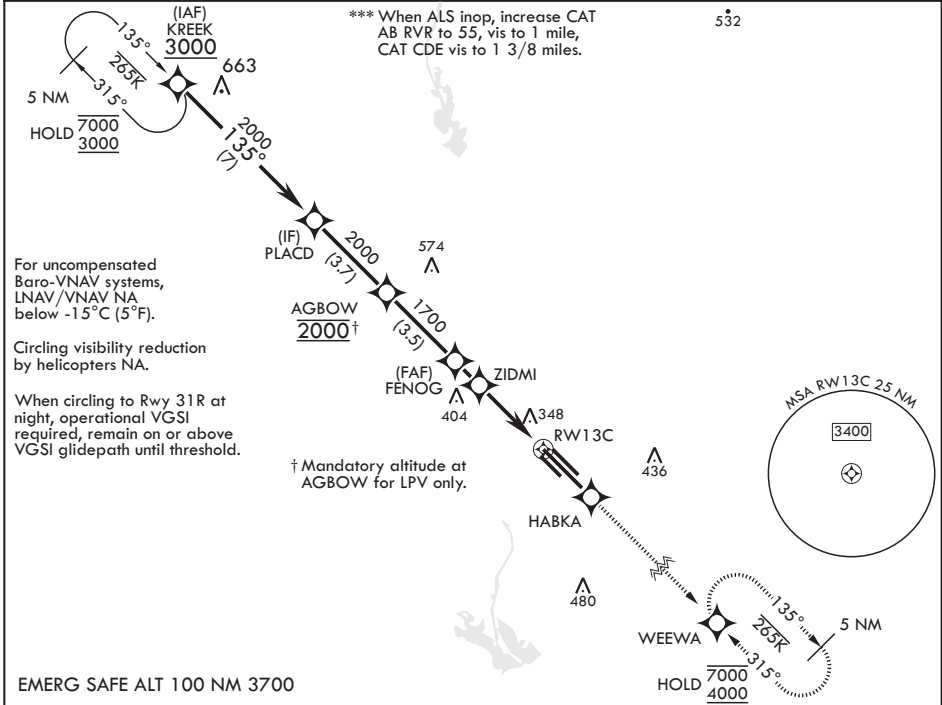
ALSF-1

MISSED APPROACH: Climb to 4000 direct HABKA, direct track to WEEWA and hold as published.

▼ * When ALS inop increase RVR to 40, vis to ¼ mile.
** When ALS inop, increase vis to 1 3/8 miles.



ATIS* 115.2 273.5	APP CON* 126.075 239.25 N 134.55 350.3 SE 135.6 323.275 SW	TOWER* 126.65 379.925	GND CON* 121.9 275.8	CLNC DEL* 269.55
----------------------	---	--------------------------	-------------------------	---------------------



For uncompensated Baro-VNAV systems, LNAV/VNAV NA below -15°C (5°F).

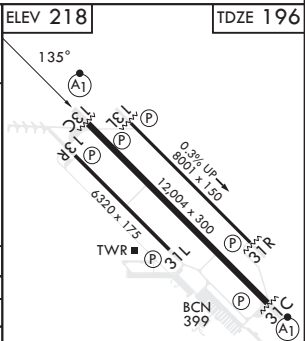
Circling visibility reduction by helicopters NA.

When circling to Rwy 31R at night, operational VGSI required, remain on or above VGSI glidepath until threshold.

† Mandatory altitude at AGBOW for LPV only.

EMERG SAFE ALT 100 NM 3700

KREEK	3000	PLACD	AGBOW	FENOG	ZIDMI	RWY 13C	WEEWA	ELEV 218	TDZE 196
		2000	2000	1700	1260	400			
GP 3.00°									
TCH 49									
CATEGORY	A	B	C	D	E				
LPV DA*		396/24	200	(200-½)					
LNAV/VNAV DA**		666/50	470	(500-1)					
LNAV MDA***	680/24	484 (500-½)	680/50	484 (500-1)					
CIRCLING	700-1 482 (500-1)	720-1 502 (600-1)	740-1½ 522 (600-1½)	880-2 662 (700-2)	1240-3 1022 (1100-3)				



MIRL Rwy 13R-31L
HIRL Rws 13C-31C, 13L-31R

SC-4, 15 MAY 2025 to 12 JUN 2025

SC-4, 15 MAY 2025 to 12 JUN 2025

COLUMBUS, MISSISSIPPI

33°39'N - 88°27'W

COLUMBUS AFB (KCBM)

Amdt 4 07SEP23

RNAV (GPS) RWY 13C