

COLUMBUS, MISSISSIPPI

# ILS or LOC Y RWY 31C

LOC I-TBB <b>108.7</b>	APCH CRS <b>315°</b>	Rwy Igd TDZE Arprt Elev	31C <b>12,004</b> <b>213</b> <b>218</b>	31R <b>8001</b> <b>218</b> <b>218</b>
---------------------------	-------------------------	-------------------------------	--	--

[USAF]

COLUMBUS AFB (KCBM)

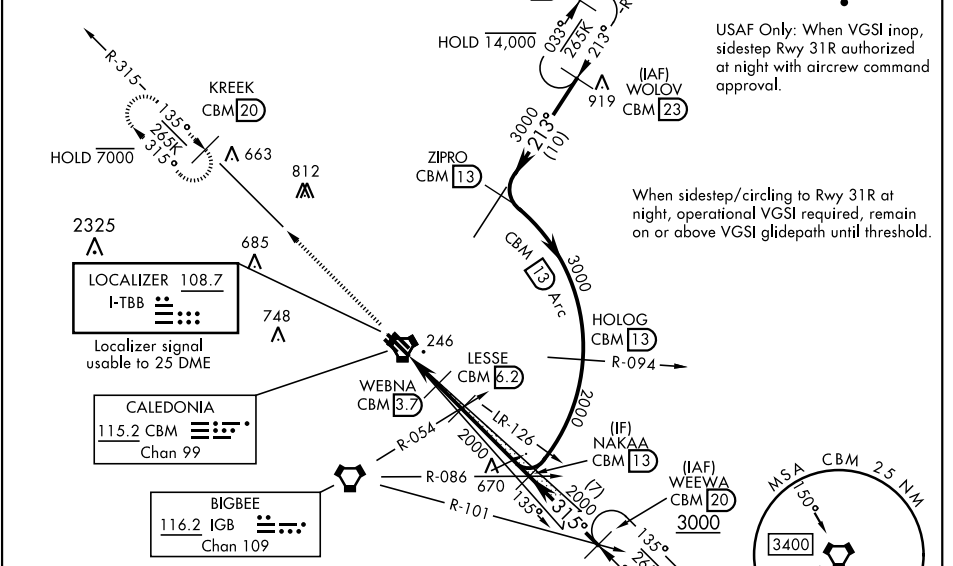
**▲** \* When ALS inop, increase RVR to 40, vis to ¼ mile.  
**\*\*** When ALS inop, increase CAT AB RVR to 55, vis to 1 mile: CAT CDE vis to 1 ¼ miles.  
**†** When ALS inop, increase CAT AB RVR to 55, vis to 1 mile: CAT CDE vis to 1 ¾ miles.

**ALS-1**

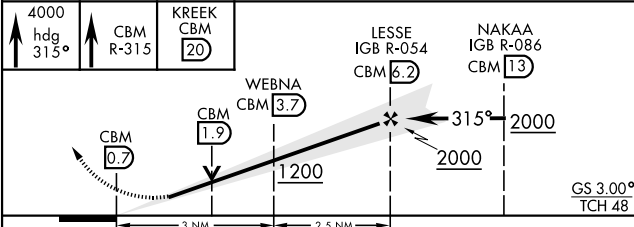
**MISSED APPROACH:** Climb heading 315° to intercept the VOR/TAC CBM R-315 outbound to KREEK (CBM R-315/20) and hold. Maintain 4000.

<b>ATIS★</b> <b>115.2 273.5</b>	<b>APP CON★</b> SE <b>134.55 350.3</b> SW <b>135.6 323.275</b> N <b>126.075 239.25</b>	<b>TOWER★</b> <b>126.65 379.925</b>	<b>GND CON★</b> <b>121.9 275.8</b>	<b>CLNC DEL★</b> <b>269.55</b>
------------------------------------	---	--	---------------------------------------	-----------------------------------

**\*\*\* CAUTION:**  
 Rwy centerlines separated by 1450', sidestep not for civil use.

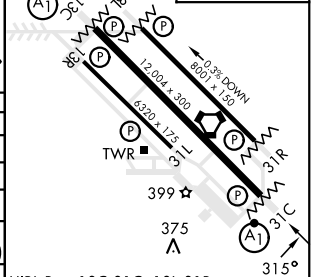


EMERG SAFE ALT 100 NM 3700



ELEV 218	TDZE 31C 213	TDZE 31R 218
----------	--------------	--------------

CATEGORY	A	B	C	D	E
S-ILS 31C**		413/24	200	(200-½)	
S-LOC 31C**	640/24	427 (500-½)	640/40	427 (500-¾)	
SIDESTEP RWY 31R***	640/55	422 (500-1)	640-1 ¼	422 (500-1 ¼)	
CIRCLING	700-1 482 (500-1)	720-1 502 (600-1)	740-1 ½ 522 (600-1 ½)	880-2 662 (700-2)	1240-3 1022(1100-3)
LOCAL ALTIMETER, WITHOUT LAST STEPDOWN FIX					
S-LOC 31C †	720/24	507 (600-½)	720/55	507 (600-1)	
SIDESTEP*** RWY 31R	760/55	542 (600-1)	760-1 ⅝	542 (600-1 ⅝)	
CIRCLING	760-1	542 (600-1)	760-1 ⅝ 542 (600-1 ⅝)	880-2 662 (700-2)	1240-3 1022(1100-3)



HIRL Rwy 13C-31C, 13L-31R					
MIRL Rwy 13R-31L					
FAF to MAP 5.5 NM					
Knots	60	90	120	150	180
Min:Sec	5:30	3:40	2:45	2:12	1:50

COLUMBUS, MISSISSIPPI  
Amdt 2 23FEB23

33°39'N-88°27'W

COLUMBUS AFB (KCBM)

# ILS or LOC Y RWY 31C

SC-4, 15 MAY 2025 to 12 JUN 2025

SC-4, 15 MAY 2025 to 12 JUN 2025