

COLUMBUS, MISSISSIPPI

HI-ILS or LOC Z RWY 13C

LOC I-CBM 109.3	APCH CRS 135°	Rwy Idg 13C 12,004 13L 8001 TDZE 196 194 Arprt Elev 218 218
---------------------------	-------------------------	---

[USAF]

COLUMBUS AFB (KCBM)

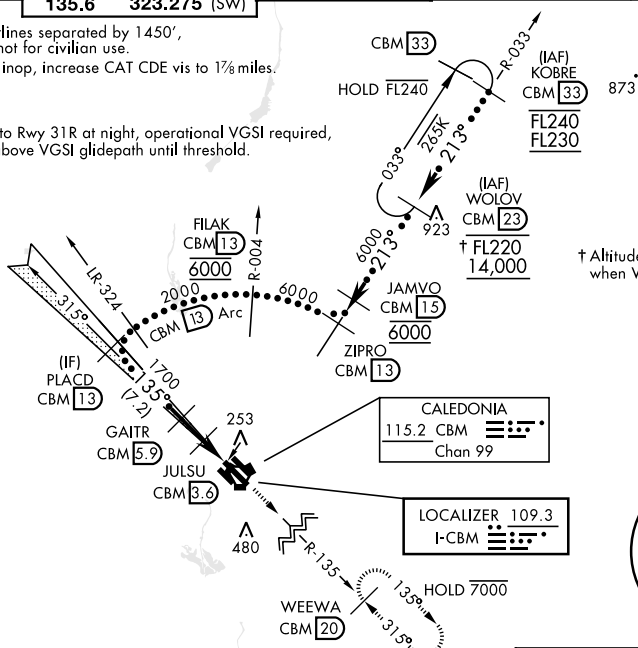
▲ *When ALS inop, increase RVR to 40, vis to ¼ mile.
**When ALS inop, increase vis to 1½ miles.

ALSF-1 (A1) MISSED APPROACH: Climb heading 135° to intercept the CBM VORTAC R-135 outbound to WEEWA (CBM R-135/20) and hold. Maintain 4000

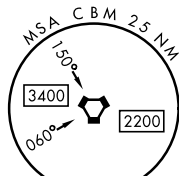
ATIS★ 115.2 273.5	APP CON★ 126.075 239.25 (N) 134.55 350.3 (SE) 135.6 323.275 (SW)	TOWER★ 126.65 379.925	GND CON★ 121.9 275.8	CLNC DEL★ 269.55
-----------------------------	--	---------------------------------	--------------------------------	----------------------------

*** CAUTION:
Rwy centerlines separated by 1450',
SIDESTEP not for civilian use.
**** When ALS inop, increase CAT CDE vis to 1½ miles.

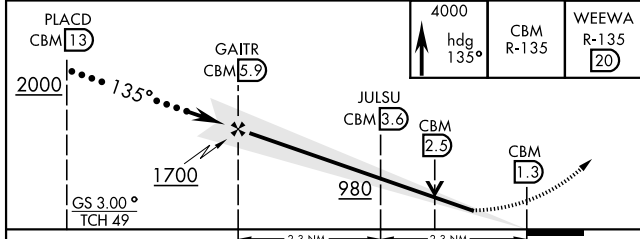
When circling to Rwy 31R at night, operational VGSI required,
remain on or above VGSI glidepath until threshold.



† Altitude restriction only applies when WOLOV is IAF.

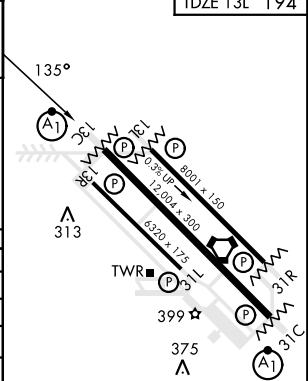


EMERG SAFE ALT 100 NM 3700 FROM CBM



ELEV 218	TDZE 13C 196
	TDZE 13L 194

CATEGORY	C	D	E
S-ILS 13C*	396/24	200	(200-½)
S-LOC 13C**	640/45	444	(500-7/8)
SIDESTEP *** RWY 13L	640-1½	446	(500-13/8)
C CIRCLING	740-1½ 522 (600-1½)	880-2 662 (700-2)	1240-3 1022 (1100-3)
LOCAL ALTIMETER, WITHOUT LAST STEPDOWN FIX			
S-LOC 13C****	840-1½	644	(700-1½)
SIDESTEP *** RWY 13L	840-17/8	646	(700-17/8)
C CIRCLING	840-17/8 622 (700-17/8)	880-2 662 (700-2)	1240-3 1022 (1100-3)



MIRL Rwy 13R-31L	13C-31C, 13L-31R
FAF to MAP 4.6 NM	
Knots	120 140 160 180 200
Min:Sec	2:18 1:58 1:44 1:32 1:23

COLUMBUS, MISSISSIPPI

33° 39'N-88° 27'W

COLUMBUS AFB (KCBM)

Amtd 2 21APR22

HI-ILS or LOC Z RWY 13C

SC-4, 15 MAY 2025 to 12 JUN 2025

SC-4, 15 MAY 2025 to 12 JUN 2025