

LOC/DME I-PVY <b>111.55</b>	APP CRS <b>238°</b>	Rwy Idg TDZE <b>780</b>	<b>9000</b>
Chan <b>52(Y)</b>		Apt Elev <b>799</b>	

# ILS RWY 24R (SA CAT I)

CLEVELAND-HOPKINS INTL (CLE)

DME required. Aircraft not DME/DME/IRU or GPS equipped - RADAR required for procedure entry. RNAV 1. From LLROY and BUDRW: RNAV 1-DME/DME/IRU or GPS required for procedure entry.

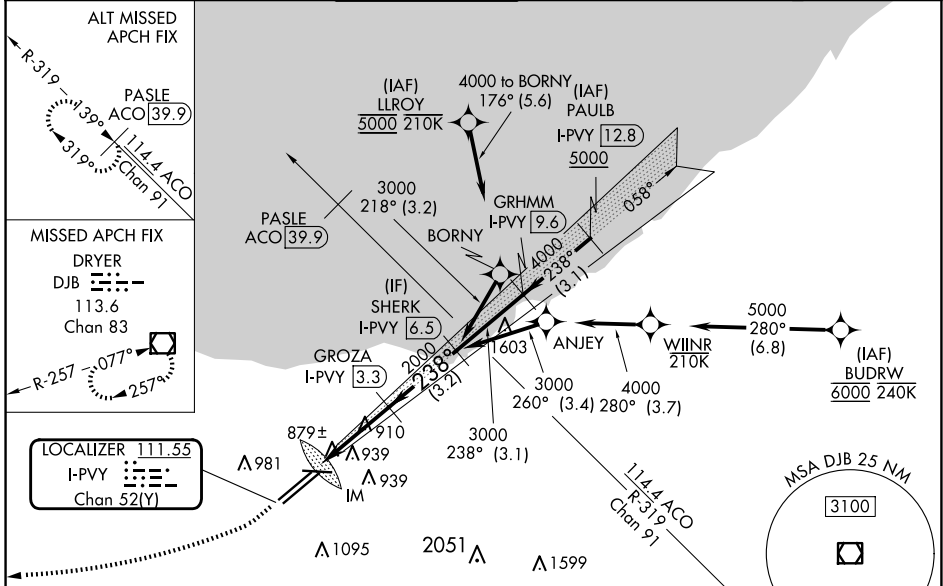
ALSF-2



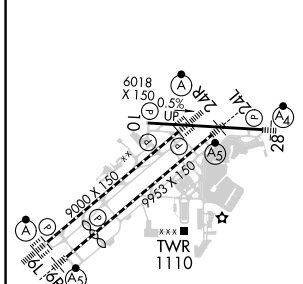
MISSED APPROACH: Climb to 1700 then climbing right turn to 3000 direct DJB VOR/DME and hold.

Requires specific OPSPEC, MSPEC, or LOA approval and use of HUD to DH. Simultaneous approach authorized. Simultaneous operations require use of vertical guidance; maintain last assigned altitude until established on glideslope.

D-ATIS ARR <b>127.85</b> DEP <b>132.375</b>	CLEVELAND APP CON <b>126.55 346.325</b>	CLEVELAND TOWER <b>124.5 273.45</b>	GND CON <b>121.7 273.45</b>	CLNC DEL <b>125.05 273.45</b>	CPDLC
---	--	--	--------------------------------	----------------------------------	-------



ELEV 799	<b>D</b>	TDZE 780
----------	----------	----------



CATEGORY	A	B	C	D
S-ILS 24R	RA 150/14 150 DA 930			

**SA CATEGORY I ILS - SPECIAL AIRCREW & AIRCRAFT CERTIFICATION REQUIRED**

EC-2, 15 MAY 2025 to 12 JUN 2025

EC-2, 15 MAY 2025 to 12 JUN 2025