

# RNAV (GPS) RWY 3

CINCINNATI MUNI/LUNKEN FLD (LUK)

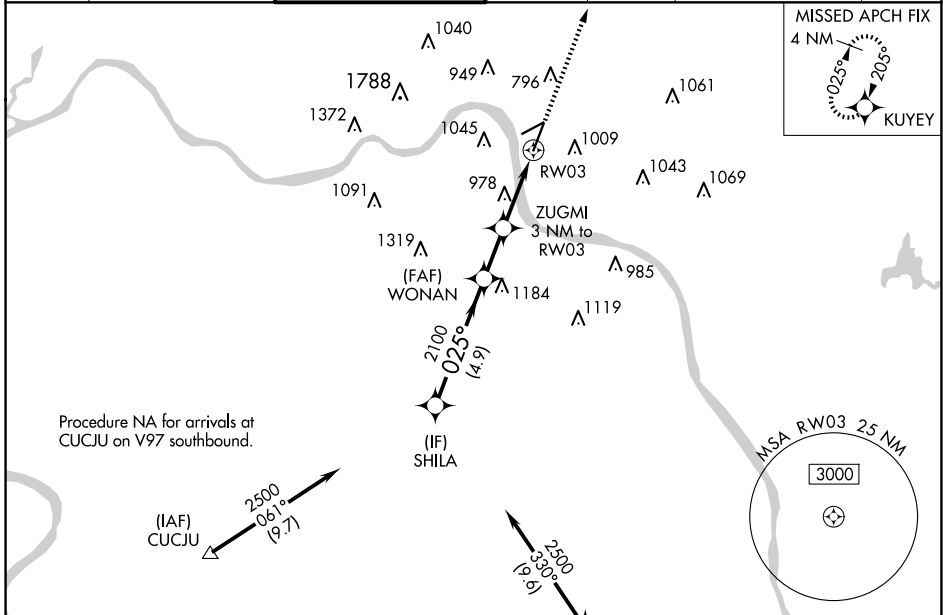
APP CRS	Rwy Idg	<b>6101</b>
<b>025°</b>	TDZE	<b>481</b>
	Apt Elev	<b>482</b>

RNP APCH-GPS.

**▽**  
**▲** Rwy 3 helicopter visibility reduction below  $\frac{3}{4}$  SM NA.  
Circling NA for Cat D north of Rwy 7-25. Circling Rwy 7 NA at night.

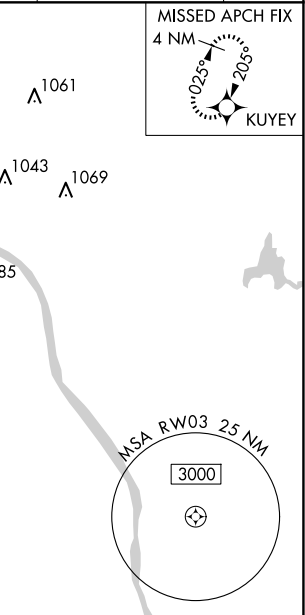
MISSED APPROACH: Climb to 2600 direct KUYEY and hold.

ATIS	CINCINNATI APP CON	LUNKEN TOWER ★	GND CON	CLNC DEL	CLNC DEL	UNICOM
<b>123.6</b>	<b>121.0 254.25</b>	<b>118.7</b> (CTAF) <b>0 257.8</b>	<b>121.9</b>	<b>121.9</b>	<b>124.9</b> (When twr closed)	<b>122.95</b>

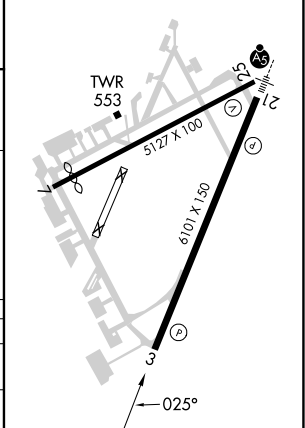
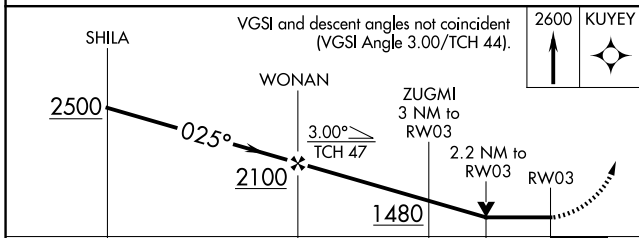


Procedure NA for arrivals at CUCJU on V97 southbound.

Procedure NA for arrivals at FLM VOR/DME on V517 southeast bound.



ELEV	<b>482</b>	TDZE	<b>481</b>
REIL Rwy 3		MIRL Rwy 3-21	
MIRL Rwy 7-25			



CATEGORY	A	B	C	D
LNVA MDA	1240-1 759 (800-1)	1240-1¼ 759 (800-1¼)	1240-2	759 (800-2)
CIRCLING	1260-1 778 (800-1)	1360-1¼ 878 (900-1¼)	1360-2½ 878 (900-2½)	1400-3 918 (1000-3)

EC-2, 15 MAY 2025 to 12 JUN 2025

EC-2, 15 MAY 2025 to 12 JUN 2025