

WAAS CH <b>65614</b> <b>W04A</b>	APP CRS <b>047°</b>	Rwy Idg <b>5927</b> TDZE <b>619</b> Apt Elev <b>620</b>
--	------------------------	---

# RNAV (GPS) Z RWY 4R

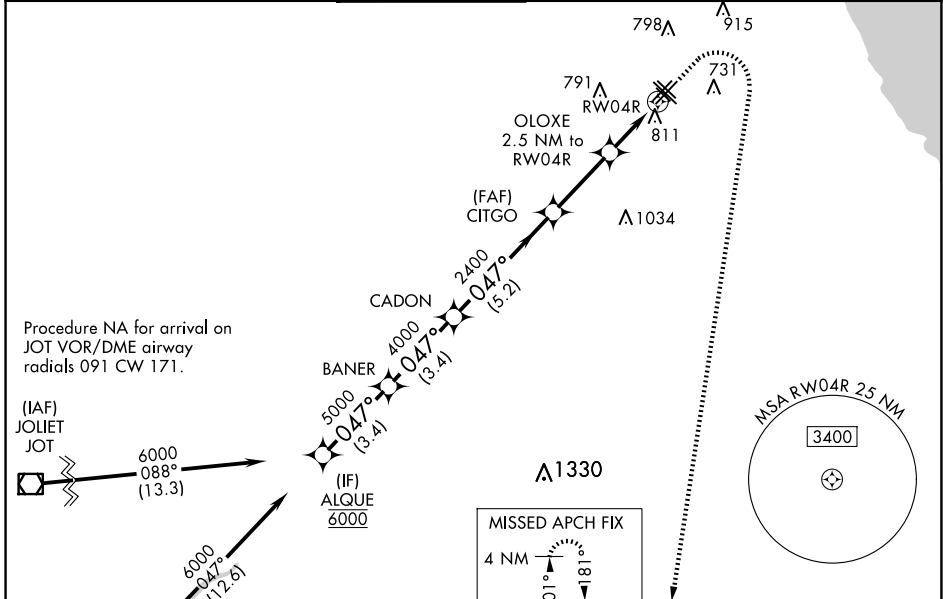
CHICAGO MIDWAY INTL (MDW)

RNP APCH - GPS

**⚠** Circling Rwy 31R NA at night.  
Rwy 4R helicopter visibility reduction below RVR 4000 NA.  
For uncompensated Baro-VNAV systems, LNAV/VNAV NA below -20°C or above 54°C.

MISSED APPROACH: Climb to 1100 then climbing right turn to 2600 direct EON VORTAC and hold.

D-ATIS <b>132.75</b>	CHICAGO APP CON <b>128.2 353.875</b>	MIDWAY TOWER <b>135.2 269.125</b>	GND CON <b>118.075</b>	CLNC DEL <b>124.625</b>	CPDLC
-------------------------	---	--------------------------------------	---------------------------	----------------------------	-------

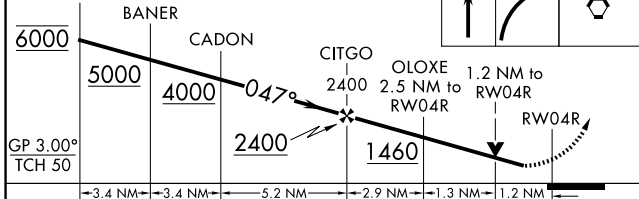


ELEV 620	<b>D</b>	TDZE 619
----------	----------	----------

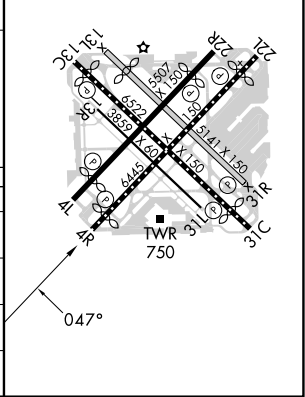
Procedure NA for arrival on JOT VOR/DME airway radials 091 CW 171.

GP 3.00° TCH 50

VGSI and RNAV glidepath not coincident (VGSI Angle 3.00/TCH 66).



HIRL Rwy 4R-22L and 13C-31C  
MIRL Rwys 4L-22R, 13L-31R, and 13R-31L  
REIL Rwy 4R, 22L, and 31C  
RLS Rwy 13C and 31C



CATEGORY	A	B	C	D
LPV DA		869/40	250 (300-¾)	
LNAV/VNAV DA		1097-1⅓	478 (500-1⅓)	
LNAV MDA	1080/55	461 (500-1)	1080-1⅓	461 (500-1⅓)
<b>C</b> CIRCLING	1120-1	500 (500-1)	1340-2 720 (800-2)	1340-2¼ 720 (800-2¼)

EC-3, 15 MAY 2025 to 12 JUN 2025

EC-3, 15 MAY 2025 to 12 JUN 2025