

WAAS CH 86200 W36B	APP CRS 003°	Rwy Idg 10000 TDZE 707 Apt Elev 748
--	------------------------	--

RNAV (GPS) Y RWY 36C

CHARLOTTE/DOUGLAS INTL (CLT)

RNP APCH.

⚠ Circling NA at night. Simultaneous approach authorized. Use of FD or AP required during simultaneous operations. For uncompensated Baro-VNAV systems, LNAV/VNAV NA below -11°C or above 54°C. LNAV procedure NA during simultaneous operations.



MISSED APPROACH:
Climb to 3000 direct
TOMME and hold.

D-ATIS ARR 121.15 DEP 132.1

CHARLOTTE APP CON (001°-119°) 128.32 (120°-295°) 120.05 (296°-360°) 134.75 (180°-359°) 257.2 (360°-179°) 307.8
--

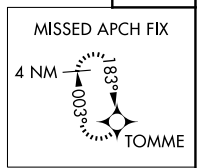
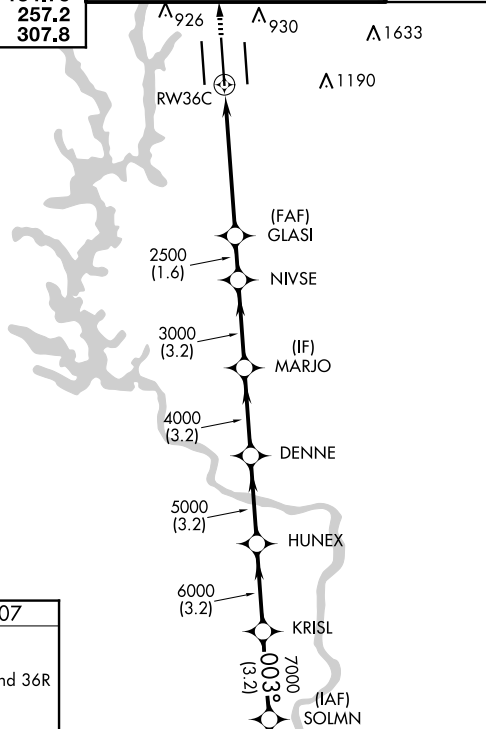
CHARLOTTE TOWER (Rwys 18L-36R) 118.1 257.8 (Rwy 18C-36C) 126.4 257.8 (Rwy 18R-36L) 133.35 257.8

GND CON 121.8 348.6 (WEST) 121.9 348.6 (EAST)

CLNC DEL 127.15 348.6

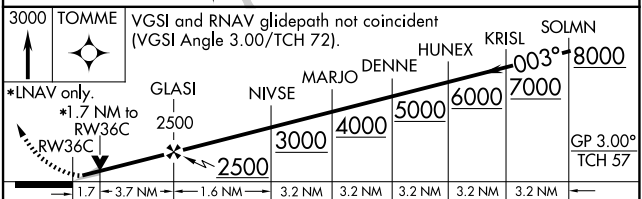
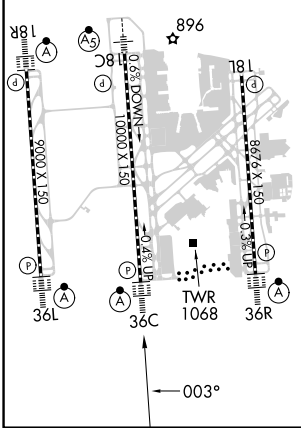
Λ 1847

Λ 926	Λ 930	Λ 1633	Λ 1190	CPDLC
--------------	--------------	---------------	---------------	-------

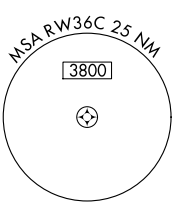


ELEV 748	D	TDZE 707
----------	----------	----------

HIRL all Rwys
REIL Rwys 18L and 23
TDZ/CL Rwys 18R, 36L, 36C and 36R



CATEGORY	A	B	C	D
LPV DA	907/18		200 (200-1/2)	
LNAV/VNAV DA	1229-1 3/8		522 (500-1 3/8)	
LNAV MDA	1320/40	613 (600-3/4)	1320-1 3/8	613 (600-1 3/8)
C CIRCLING	1380-1	632 (700-1)	1500-2 1/4 752 (800-2 1/4)	1500-2 1/2 752 (800-2 1/2)



SE-2, 15 MAY 2025 to 12 JUN 2025

SE-2, 15 MAY 2025 to 12 JUN 2025