

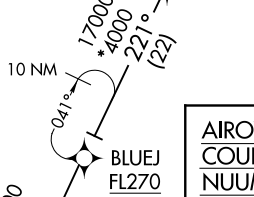
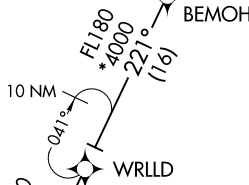
CHSLY SIX ARRIVAL (RNAV) Transition Routes

CHARLOTTE APP CON
126.15 282.325
D-ATIS ARR
121.15

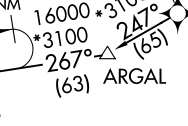
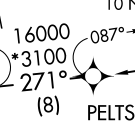
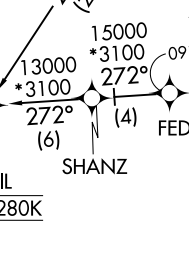
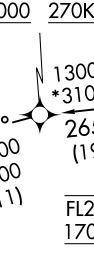
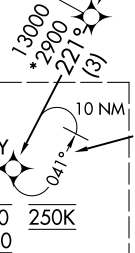
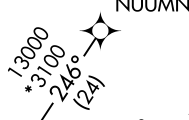
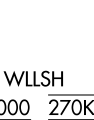
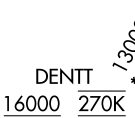
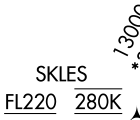
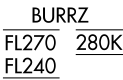
RNAV 1 - DME/DME/IRU or GPS.
RADAR required.



USE CAUTION: Parachute jumping 3 NM south SLPOH, 5 NM radius KRUQ, AOB 14,500 MSL (SR-SS).



AIROW TRANSITION (AIROW.CHSLY6)
COUPN TRANSITION (COUPN.CHSLY6)
NUUMN TRANSITION (NUUMN.CHSLY6)
SDAIL TRANSITION (SDAIL.CHSLY6)



See following page for Arrival Routes.

(CONTINUED ON FOLLOWING PAGE)

NOTE: Chart not to scale.

SE-2, 15 MAY 2025 to 12 JUN 2025

SE-2, 15 MAY 2025 to 12 JUN 2025