

VOR/DME BTV <b>117.5</b> Chan <b>122</b>	APP CRS <b>036°</b>	Rwy Idg TDZE <b>334</b> Apt Elev <b>335</b>
--	------------------------	---

# VOR RWY 1

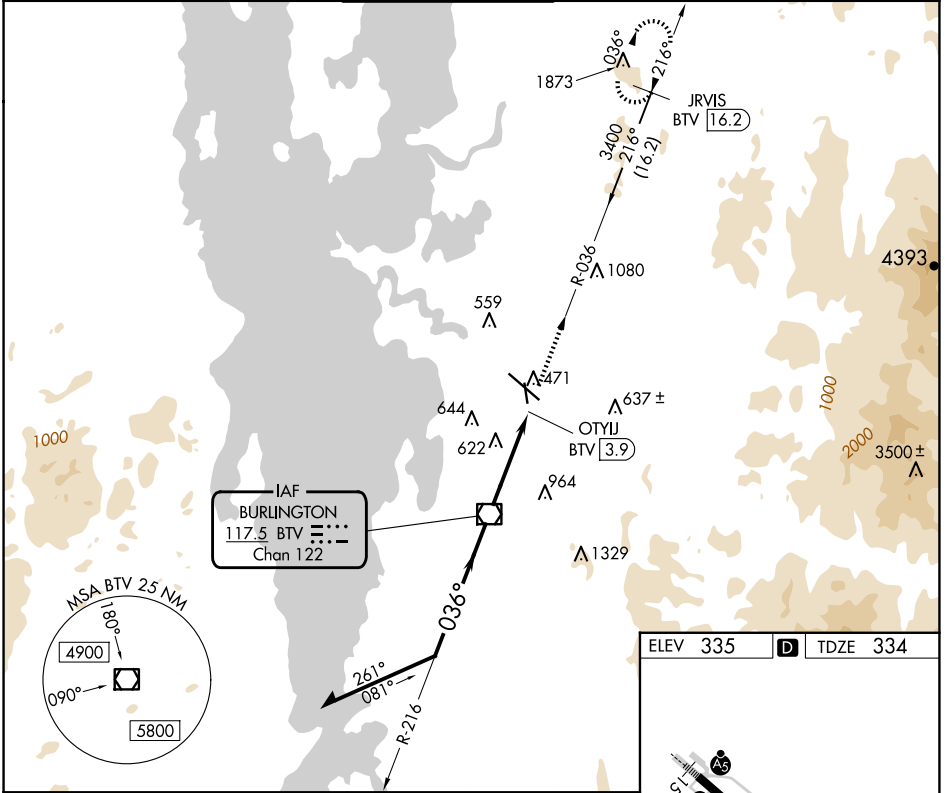
PATRICK LEAHY BURLINGTON INTL (BTV)

DME required.

**▼** Rwy 1 helicopter visibility reduction below 1 SM NA.  
**☁** -10°C Procedure NA at night.

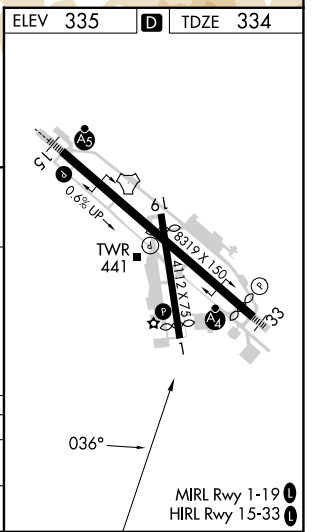
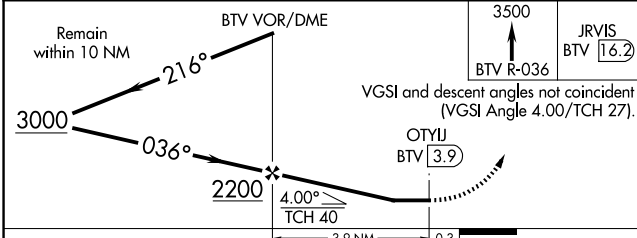
MISSED APPROACH: Climb to 3500 on BTV  
VOR/DME R-036 to JRVIS/BTV 16.2 DME and hold,  
continue to climb-in-hold 3500.

ATIS <b>123.8 269.9</b>	BURLINGTON APP CON * <b>121.1 278.8</b>	BURLINGTON TOWER * <b>118.3 (CTAF) 257.8</b>	GND CON <b>126.3 348.6</b>	CLNC DEL <b>119.15</b>	UNICOM <b>122.95</b>
----------------------------	--	---	-------------------------------	---------------------------	-------------------------



NE-1, 15 MAY 2025 to 12 JUN 2025

NE-1, 15 MAY 2025 to 12 JUN 2025



CATEGORY	A	B	C	D
S-1	880-1	546 (600-1)		NA
<b>C</b> CIRCLING	880-1	545 (600-1)		NA