

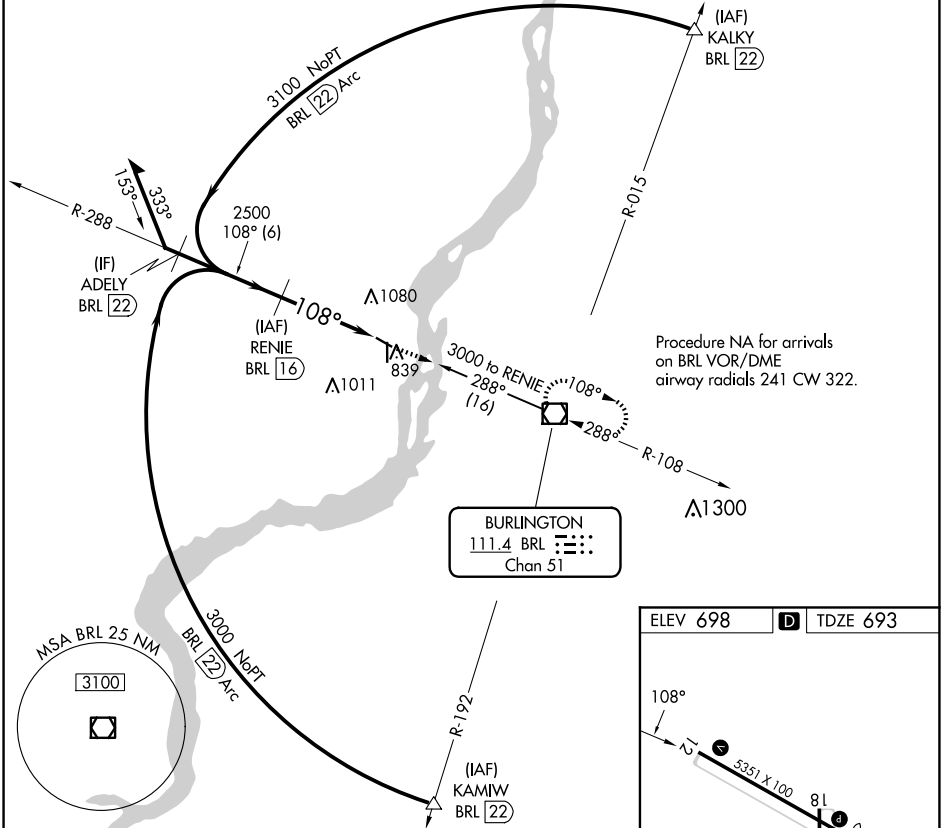
VOR/DME BRL 111.4 Chan 51	APP CRS 108°	Rwy Idg TDZE Apt Elev	5350 693 698
--	------------------------	-----------------------------	---

VOR RWY 12

SOUTHEAST IOWA RGNL (B.R.L.)

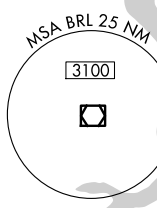
DME required.		MISSED APPROACH: Climb to 3000 direct BRL VOR/DME and hold.
---------------	--	---

ASOS 118.025	CHICAGO CENTER 135.6 370.95	UNICOM 123.0 (CTAF) 0
------------------------	---------------------------------------	---------------------------------

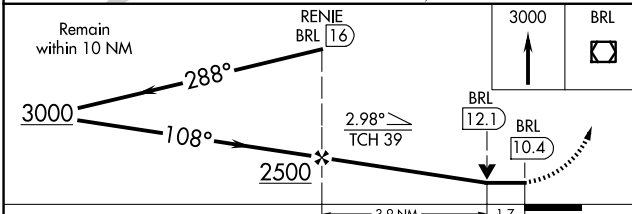
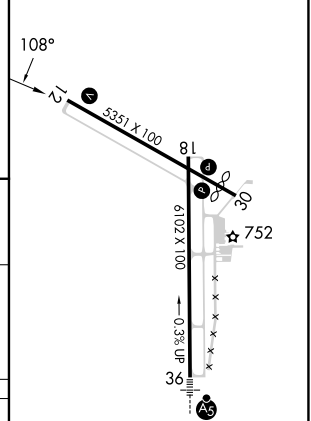


Procedure NA for arrivals on BRL VOR/DME airway radials 241 CW 322.

BURLINGTON
111.4 BRL
Chan 51



ELEV 698	TDZE 693
----------	----------



CATEGORY	A	B	C	D
S-12	1280-1	587 (600-1)	1280-1¾ 587 (600-1¾)	NA
C CIRCLING	1280-1	582 (600-1)	1380-2 682 (700-2)	NA

- MIRL Rwy 12-30
- HIRL Rwy 18-36
- REIL Rws 12, 18 and 30

NC-3, 15 MAY 2025 to 12 JUN 2025

NC-3, 15 MAY 2025 to 12 JUN 2025