

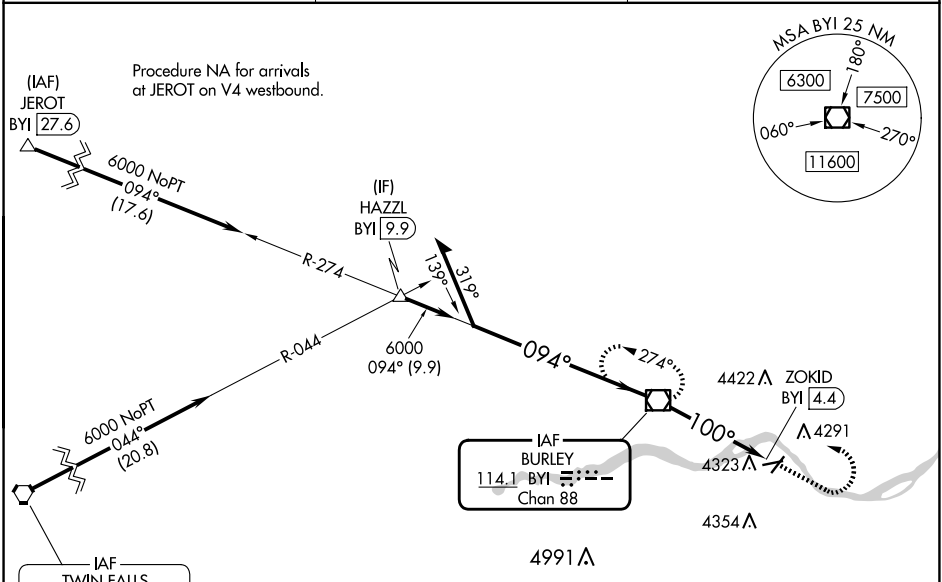
VOR/DME BYI 114.1 Chan 88	APP CRS 100°	Rwy Idg TDZE N/A Apt Elev 4154
---	------------------------	---

VOR-A
BURLEY MUNI (BYI)

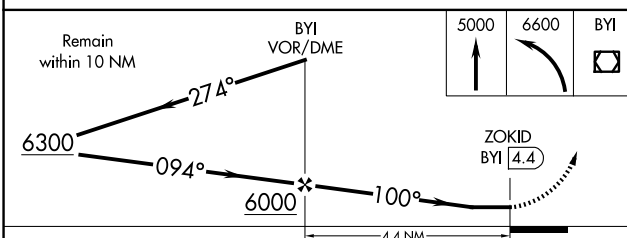
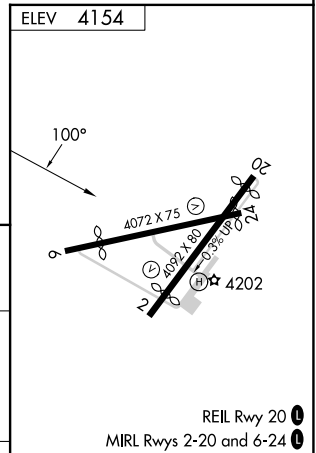
⚠ Circling Rwy 2, 24 NA at night. Rwy 2, 20, 24 helicopter visibility reduction below 1 SM NA. When local altimeter setting not received, use TWF altimeter setting and increase all MDAs 80 feet and visibility Cats C and D ¼ SM. When Circling Rwy 20, exhaust stacks located along Rwy 20 extended final approach course approximately 2345 feet from approach end.

MISSED APPROACH: Climb to 5000 then climbing left turn to 6600 direct BYI VOR/DME and hold, continue climb-in-hold to 6600.

ASOS 135.575	TWIN FALLS APP CON * 126.7 353.75	CTAF 122.9
------------------------	---	----------------------



Procedure NA for arrival on TWF
VORTAC airway radials 349 CW 097.



CATEGORY	A	B	C	D	FAF to MAP 4.4 NM					
	4640-1 486 (500-1)	4660-1 506 (600-1)	4740-1½ 586 (600-1½)	4780-2 626 (700-2)	Knots	60	90	120	150	180
C CIRCLING					Min:Sec	4:24	2:56	2:12	1:46	1:28

NW-1, 15 MAY 2025 to 12 JUN 2025

NW-1, 15 MAY 2025 to 12 JUN 2025