

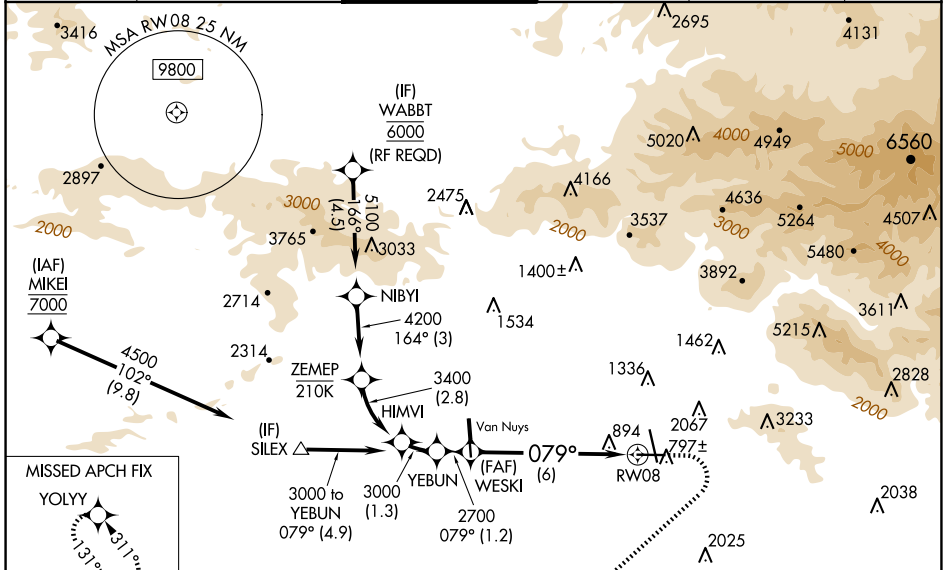
APP CRS	Rwy Idg	<b>5801</b>
<b>079°</b>	TDZE	<b>727</b>
	Apt Elev	<b>778</b>

# RNAV (RNP) Y RWY 8

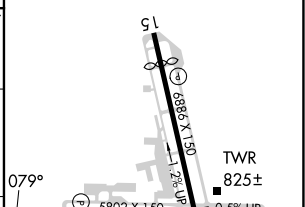
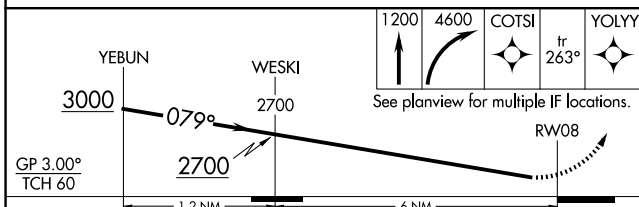
BOB HOPE (BUR)

RNP AR APCH.		MALSR	MISSED APPROACH: Climb to 1200 then climbing right turn to 4600 direct COTSI and on track 263° to YOLYY and hold. *Missed approach requires minimum climb of 340 feet per NM to 2400. # Missed approach requires minimum climb of 317 feet per NM to 2400.
For uncompensated Baro-VNAV systems, procedure NA below 1°C or above 54°C. Straight-in Rwy 8 at night, operational VGSI required, remain on or above VGSI glidepath until threshold. Inop table does not apply to RNP 0.20* and RNP 0.30. For inop ALS, increase RNP 0.30 # all Cats visibility to 1½ SM.		(AS)	

D-ATIS	SOCAL APP CON	BURBANK TOWER	GND CON	CLNC DEL	CPDLC
<b>134.5</b>	<b>120.4 360.6 (NORTH)</b> <b>134.2 338.2 (WEST)</b>	<b>118.7 254.3</b>	<b>123.9 348.6</b>	<b>118.0 348.6</b>	



ELEV	778	TDZE	727
------	-----	------	-----



CATEGORY	A	B	C	D
RNP 0.20 DA*		1068/50	341 (300-1)	
RNP 0.30 DA#		1151/50	424 (400-1)	
RNP 0.30 DA		1485-2½	758 (800-2½)	

## AUTHORIZATION REQUIRED

MIRL Rwy 15-33  
 HIRL Rwy 8-26  
 REIL Rwy 15, 26 and 33

SW-3, 15 MAY 2025 to 12 JUN 2025

SW-3, 15 MAY 2025 to 12 JUN 2025