

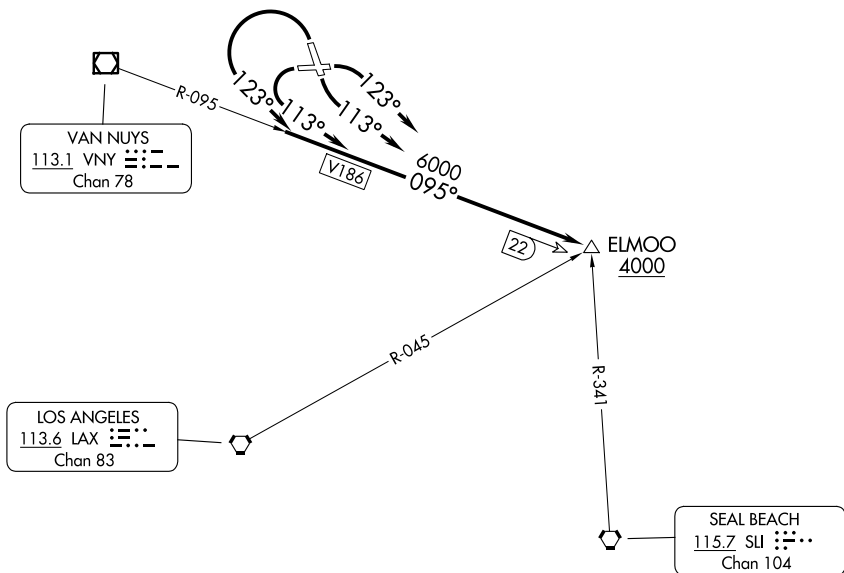
(ELMOO9.ELMOO) 23334
ELMOO NINE DEPARTURE

AL-67 (FAA)

BOB HOPE (BUR)
 BURBANK, CALIFORNIA

SOCAL DEP CON
 135.05 317.5
 CLNC DEL
 118.0 348.6
 CPDLC

**TOP ALTITUDE:
 ASSIGNED BY ATC**



TAKEOFF MINIMUMS

- Rwy 8: Standard with minimum climb of 380' per NM to 2500.
- Rwy 15: Standard with minimum climb of 450' per NM to 3000.
- Rwy 26: Standard with minimum climb of 305' per NM to 2600.
- Rwy 33: 600-2¼ with minimum climb of 210' per NM to 4000
 or standard with minimum climb of 450' per NM to 2600.

NOTE: Chart not to scale.

DEPARTURE ROUTE DESCRIPTION

- TAKEOFF RUNWAY 8: Climbing right turn heading 123° intercept VNY VOR/DME R-095 to ELMOO. . . .
- TAKEOFF RUNWAY 15: Climbing left turn heading 113° intercept VNY VOR/DME R-095 to ELMOO. . . .
- TAKEOFF RUNWAY 26: Climbing left turn heading 113° intercept VNY VOR/DME R-095 to ELMOO. . . .
- TAKEOFF RUNWAY 33: Climbing left turn heading 123° intercept VNY VOR/DME R-095 to ELMOO. . . .

. . . .thence via assigned route. Maintain ATC assigned altitude.

SW-3, 15 MAY 2025 to 12 JUN 2025

SW-3, 15 MAY 2025 to 12 JUN 2025