

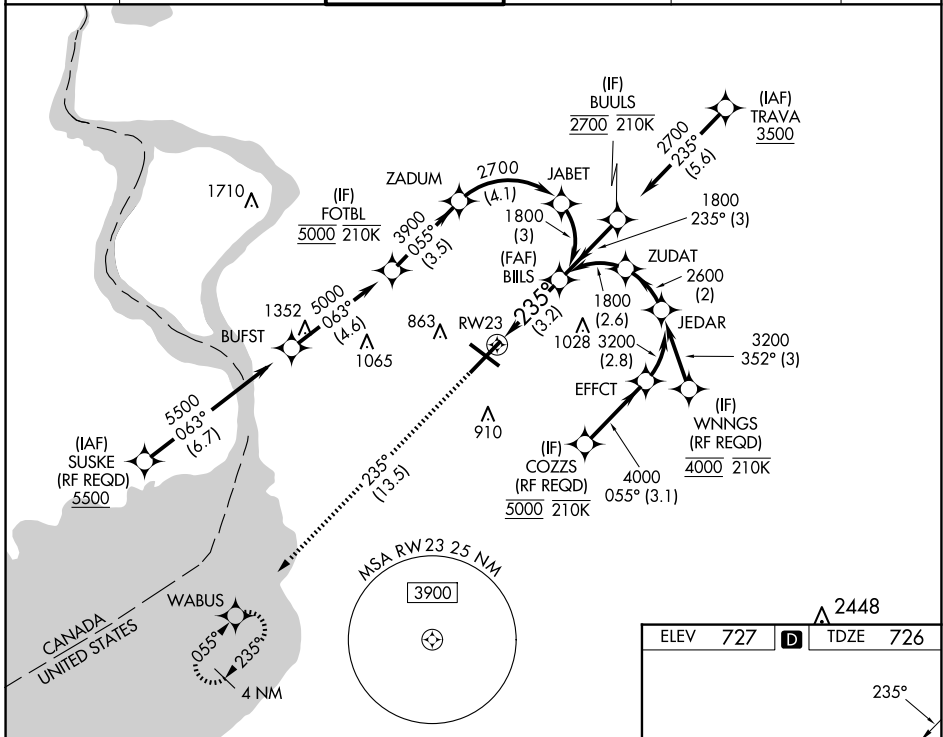
APP CRS <b>235°</b>	Rwy Idg <b>7569</b>
	TDZE <b>726</b>
	Apt Elev <b>727</b>

# RNAV (RNP) Z RWY 23

BUFFALO NIAGARA INTL (BUF)

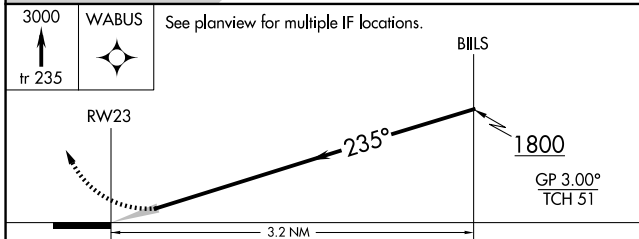
RNP AR APCH.	ALSF-2	MISSED APPROACH: Climb to 3000 on the RNAV missed approach route to WABUS and hold.
<p>▼ For uncompensated Baro-VNAV systems, procedure NA below -18°C or above 54°C. For inop ALSF, increase RNP 0.10 all Cats visibility to 1½. For inop ALSF, increase RNP 0.20 all Cats visibility to 1½. For inop ALSF, increase RNP 0.30 all Cats visibility to 1½.</p>		

D-ATIS <b>135.35</b>	BUFFALO APP CON <b>126.15 263.125</b>	BUFFALO TOWER <b>120.5 257.8</b>	GND CON <b>133.2 257.8</b>	CLNC DEL <b>124.7 257.8</b>	CPDLC
-------------------------	--	-------------------------------------	-------------------------------	--------------------------------	-------



NE-2, 15 MAY 2025 to 12 JUN 2025

NE-2, 15 MAY 2025 to 12 JUN 2025



CATEGORY	A	B	C	D
RNP 0.10 DA		1114/45	388 (400-7%)	
RNP 0.20 DA		1170/55	444 (500-1)	
RNP 0.30 DA		1228-1½	502 (600-1½)	

**AUTHORIZATION REQUIRED**

