

(PELYT.SADYL4) 21112

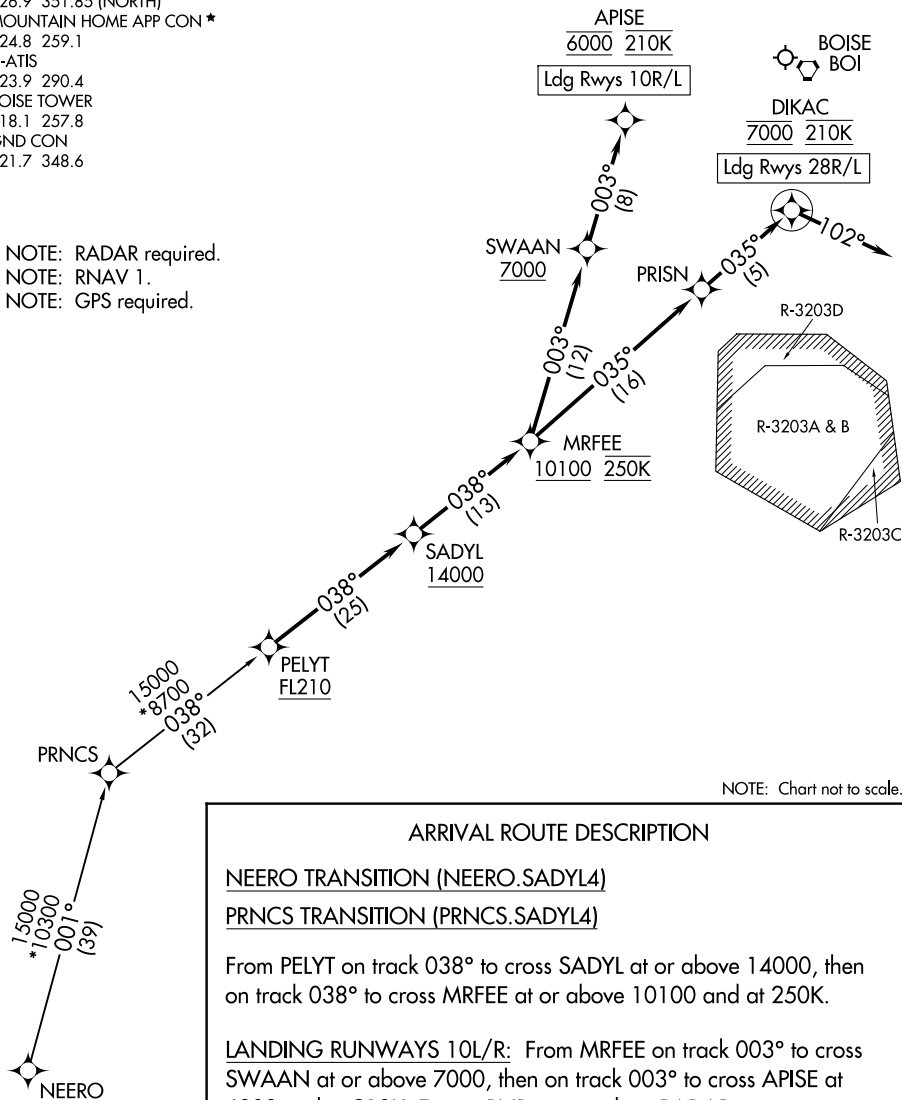
# SADYL FOUR ARRIVAL (RNAV)

AL-57 (FAA)

BOISE AIR TRML/GOWEN FLD (BOI)  
BOISE, IDAHO

BIG SKY APP CON  
119.6 269.4 (SOUTH)  
126.9 351.85 (NORTH)  
MOUNTAIN HOME APP CON ★  
124.8 259.1  
D-ATIS  
123.9 290.4  
BOISE TOWER  
118.1 257.8  
GND CON  
121.7 348.6

NOTE: RADAR required.  
NOTE: RNAV 1.  
NOTE: GPS required.



NOTE: Chart not to scale.

## ARRIVAL ROUTE DESCRIPTION

### NEERO TRANSITION (NEERO.SADYL4)

### PRNCS TRANSITION (PRNCS.SADYL4)

From PELYT on track 038° to cross SADYL at or above 14000, then on track 038° to cross MRFEE at or above 10100 and at 250K.

LANDING RUNWAYS 10L/R: From MRFEE on track 003° to cross SWAAN at or above 7000, then on track 003° to cross APISE at 6000 and at 210K. Expect RNP approach or RADAR vectors to final approach course.

LANDING RUNWAYS 28L/R: From MRFEE on track 035° to PRISN, then on track 035° to cross DIKAC at 7000 and at 210K, then on heading 102° or as assigned by ATC. Expect RNP approach or RADAR vectors to final approach course.

# SADYL FOUR ARRIVAL (RNAV)

(PELYT.SADYL4) 10SEP20

BOISE, IDAHO  
BOISE AIR TRML/GOWEN FLD (BOI)

NW-1, 15 MAY 2025 to 12 JUN 2025

NW-1, 15 MAY 2025 to 12 JUN 2025