

WAAS CH <b>78102</b> <b>W10A</b>	APP CRS <b>102°</b>	Rwy Idg <b>10000</b> TDZE <b>2844</b> Apt Elev <b>2872</b>
--	------------------------	--

# RNAV (GPS) Y RWY 10L

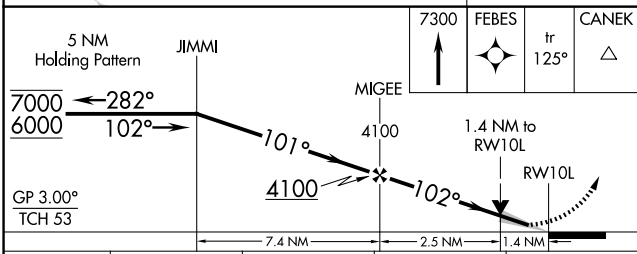
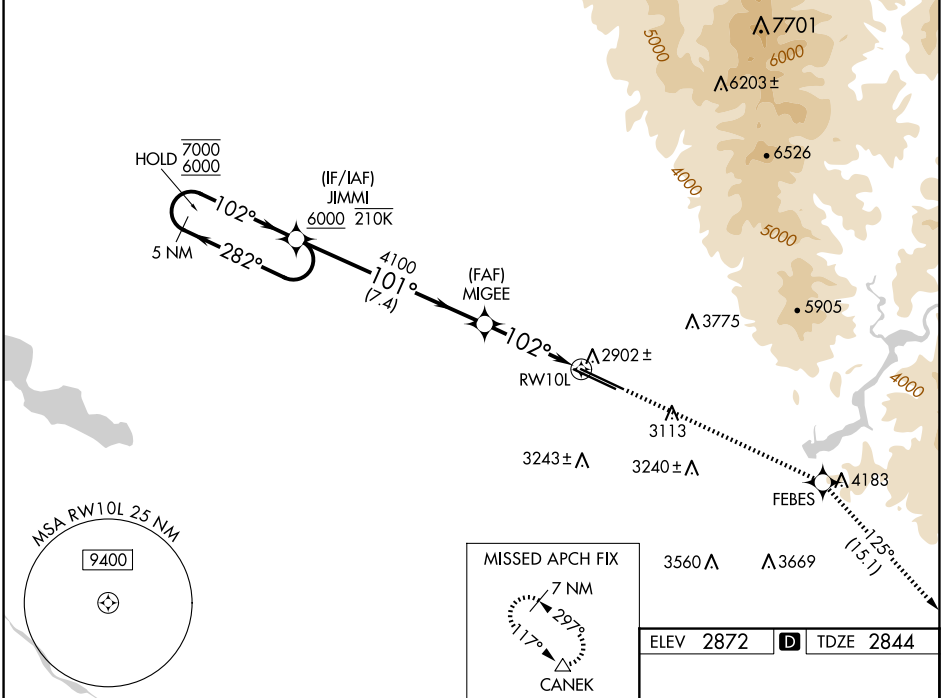
BOISE AIR TRML/GOWEN FLD (BOI)

RADAR required for procedure entry. RNP APCH - GPS.

**⚠** Circling NA north of Rwy 10L-28R. For uncompensated Baro-VNAV systems, LNAV/VNAV NA below -14°C or above 54°C.

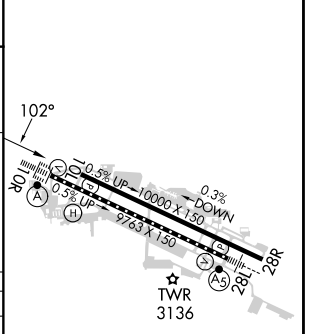
MISSED APPROACH: Climb to 7300 direct FEBES then on track 125° to CANEK and hold.

D-ATIS <b>123.9 290.4</b>	BIG SKY APP CON <b>119.6 269.4</b>	BOISE TOWER <b>118.1 257.8</b>	GND CON <b>121.7 348.6</b>	CLNC DEL <b>125.9 323.2</b>
------------------------------	---------------------------------------	-----------------------------------	-------------------------------	--------------------------------



ELEV 2872	<b>D</b> TDZE 2844
-----------	--------------------

CATEGORY	A	B	C	D
LPV DA	3044-¾ 200 (200-¾)			
LNAV/VNAV DA	3197-1 353 (400-1)			
LNAV MDA	3320-1 476 (500-1)	3320-1¾ 476 (500-1¾)		
<b>C</b> CIRCLING	3440-1 568 (600-1)	3640-2¼ 768 (800-2¼)	3820-3 948 (1000-3)	



REIL Rwy 10L  
TDZ/CL Rwys 10R and 28L  
HIRL Rwys 10L-28R and 10R-28L

NW-1, 15 MAY 2025 to 12 JUN 2025

NW-1, 15 MAY 2025 to 12 JUN 2025