

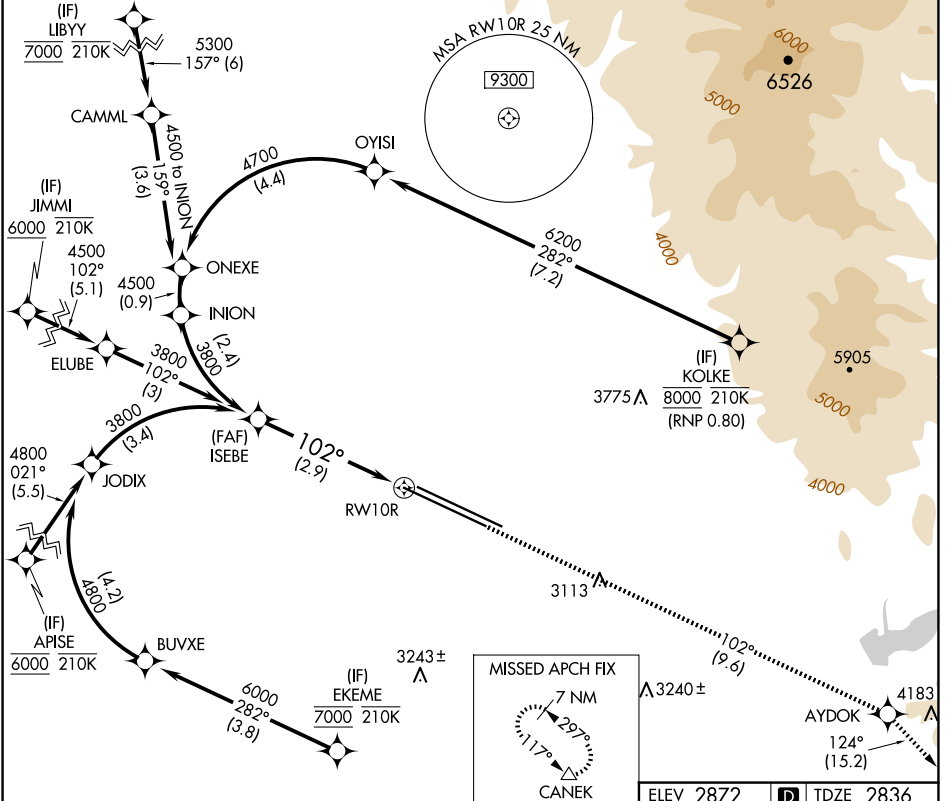
# RNAV (RNP) Z RWY 10R

BOISE AIR TRML/GOWEN FLD (BOI)

APP CRS	Rwy Idg	<b>9763</b>
<b>102°</b>	TDZE	<b>2836</b>
	Apt Elev	<b>2872</b>

RNP AR APCH - GPS.	ALSF-2	MISSED APPROACH: Climb to 7300 on track 102° to AYDOK and on track 124° to CANEK and hold.
▼ For uncompensated Baro-VNAV systems, procedure NA below -14°C or above 54°C.		

D-ATIS <b>123.9 290.4</b>	BIG SKY APP CON <b>119.6 269.4</b>	BOISE TOWER <b>118.1 257.8</b>	GND CON <b>121.7 348.6</b>	CLNC DEL <b>125.9 323.2</b>
------------------------------	---------------------------------------	-----------------------------------	-------------------------------	--------------------------------



<p>ISEBE</p> <p>3800</p> <p>3800</p> <p>GP 3.00°</p> <p>TCH 58</p> <p>See planview for multiple IF locations.</p> <p>2.9 NM</p>		<p>7300</p> <p>↑ tr 102°</p> <p>AYDOK</p> <p>tr 124°</p> <p>CANEK</p> <p>△</p> <p>VGSI and RNAV glidepath not coincident (VGSI Angle 3.00/TCH 64).</p> <p>RWY 10R</p>	<p>ELEV 2872</p> <p><b>D</b> TDZE 2836</p>	
CATEGORY	A	B	C	D
RNP 0.30 DA	3219/35		383 (400-5%)	
<b>AUTHORIZATION REQUIRED</b>				
REIL Rwy 10L		TDZ/CL Rwy 10R and 28L		HIRL Rwy 10L-28R and 10R-28L

NW-1, 15 MAY 2025 to 12 JUN 2025

NW-1, 15 MAY 2025 to 12 JUN 2025