

APP CRS	Rwy Idg	<b>10000</b>
<b>102°</b>	TDZE	<b>2844</b>
	Apt Elev	<b>2872</b>

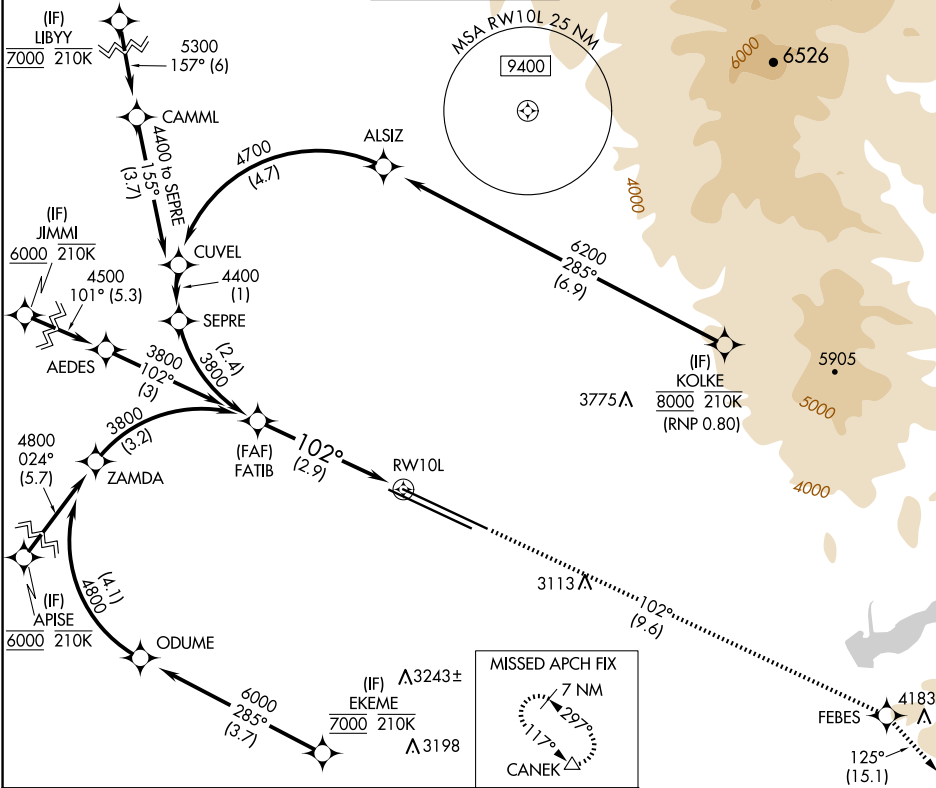
# RNAV (RNP) Z RWY 10L

BOISE AIR TRML/GOWEN FLD (BOI)

RNP AR APCH - GPS.  
 ▼ For uncompensated Baro-VNAV systems, procedure NA below -1.4°C or above 54°C.

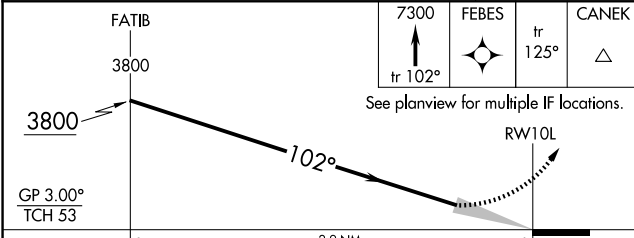
MISSED APPROACH: Climb to 7300 on track 102° to FEBES and on track 125° to CANEK and hold.

D-ATIS	BIG SKY APP CON	BOISE TOWER	GND CON	CLNC DEL
<b>123.9 290.4</b>	<b>119.6 269.4</b>	<b>118.1 257.8</b>	<b>121.7 348.6</b>	<b>125.9 323.2</b>



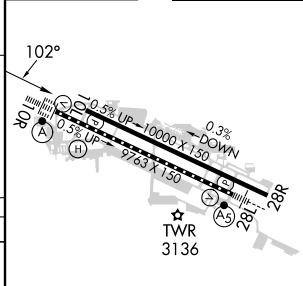
NW-1, 15 MAY 2025 to 12 JUN 2025

NW-1, 15 MAY 2025 to 12 JUN 2025



CATEGORY	A	B	C	D
RNP 0.30 DA	3237-1 3/8 393 (400-1 1/8)			

ELEV 2872	TDZE 2844
-----------	-----------



## AUTHORIZATION REQUIRED

REIL Rwy 10L  
 TDZ/CL Rwy 10R and 28L  
 HIRL Rwy 10L-28R and 10R-28L