

TACAN RWY 4

TACAN BIX Chan 55	APCH CRS 026°	Rwy ldg TDZE Arprt Elev
		6030 23 33

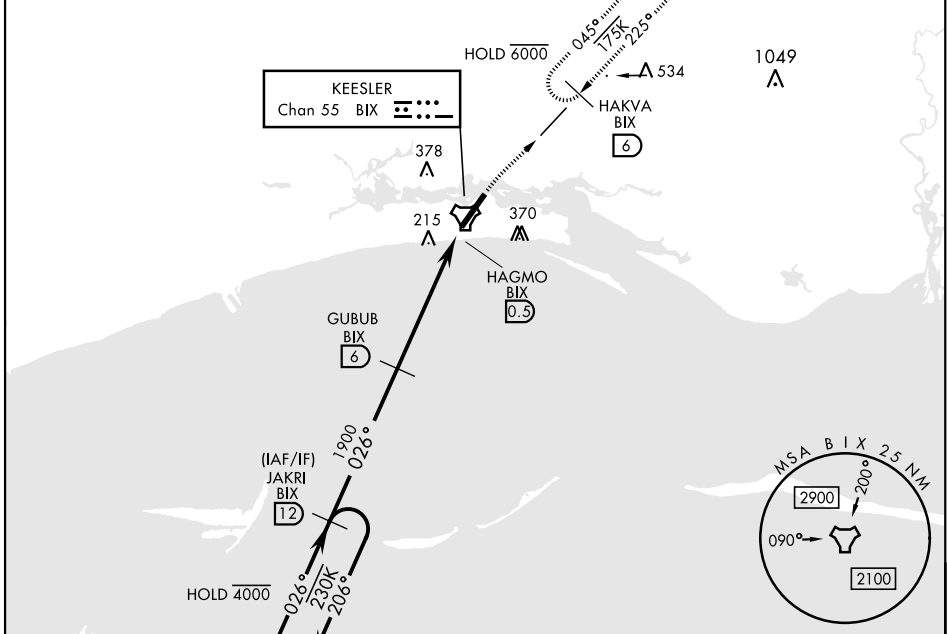
[USAF]

KEESLER AFB (KBIX)

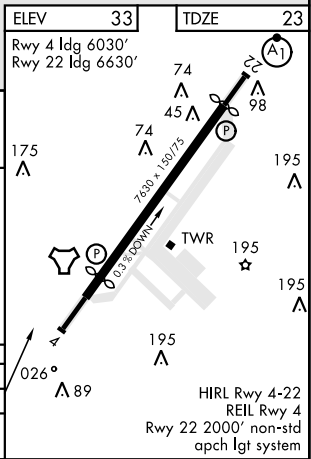
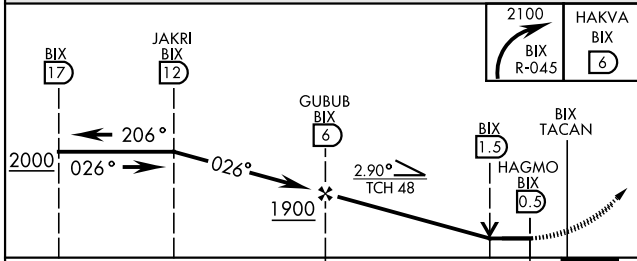
† MISSED APPROACH: Turn right climbing to 2100 to intercept BIX TACAN R-045 to 6 DME (HAKVA) and hold.

ATIS 281.55	GULFPORT APP CON 124.6 354.1 (130°- 309°) 127.5 254.25 (310°- 129°)	KEESLER TOWER ★ 120.75 269.075	GND CON 121.8 275.8	CLNC DEL 121.8 275.8
-----------------------	---	--	-------------------------------	--------------------------------

† Missed Approach requires use of RNAV or ATC RADAR monitoring.
Visibility reduction by helicopters NA.



ELEV	33	TDZE	23
Rwy 4 ldg	6030'	Rwy 22 ldg	6630'



CATEGORY	A	B	C	D
S-4	520/55 497 (500-1)	520-1 3/8 497 (500-1 3/8)	680-1 3/4	680-2
CIRCLING	580-1 547 (600-1)	660-1 627 (700-1)	647 (700-1 3/4)	647 (700-2)

TACAN RWY 4

SC-4, 15 MAY 2025 to 12 JUN 2025

SC-4, 15 MAY 2025 to 12 JUN 2025