

BILOXI, MISSISSIPPI

ILS or LOC RWY 22

LOC I-BIX 109.7	APCH CRS 217°	Rwy ldg THRE Arpt Elev 6630 17 33
---------------------------	-------------------------	---

[USAF]

KEESLER AFB (KBIX)

RADAR or DME required.

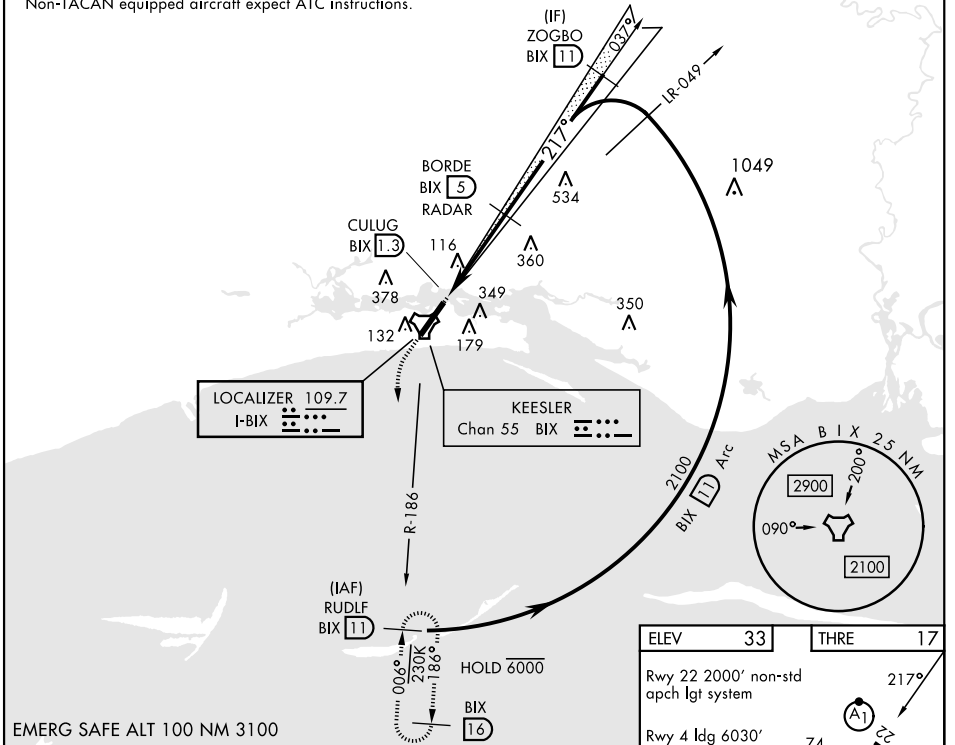
ALSF-1  MISSED APPROACH: Climb to 800 tracking 217°, upon reaching 800 turn left to intercept BIX TACAN R-186 climbing to 2200 to 11 DME (RUDLF) and hold.

* When ALS inop, increase CAT AB RVR to 55, vis to 1 mile, CAT CD vis to 1 1/2 miles.

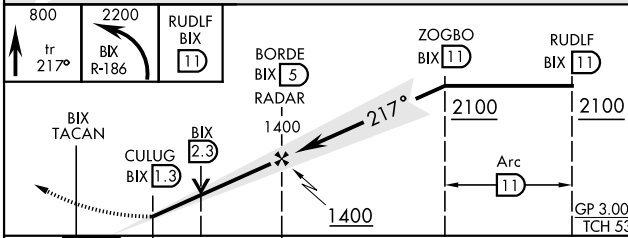
ATIS 281.55	GULFPORT APP CON 124.6 354.1 (130°- 309°) 127.5 254.25 (310°- 129°)	TOWER ★ 120.75 269.075	GND CON 121.8 275.8	CLNC DEL 121.8 275.8
-----------------------	---	----------------------------------	-------------------------------	--------------------------------


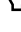




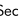
• 272

† Missed approach requires use of RNAV or ATC RADAR monitoring.
Non-TACAN equipped aircraft expect ATC instructions.



EMERG SAFE ALT 100 NM 3100



ELEV	33	THRE	17
Rwy 22 2000' non-std apch lgt system			
Rwy 4 ldg 6030'			
Rwy 22 ldg 6630'			
HIRL Rwy 4-22			
REIL Rwy 4			
 TWR 195  P 195  A 195  A 195  A 195  A 195  A 195			
FAF to MAP 3.7 NM			
Knots	60	90	120
Min:Sec	3:42	2:28	1:51
		1:29	1:14

BILOXI, MISSISSIPPI

30° 25' N-88° 55' W

KEESLER AFB (KBIX)

Amtd 2 03NOV22

ILS or LOC RWY 22

SC-4, 15 MAY 2025 to 12 JUN 2025

SC-4, 15 MAY 2025 to 12 JUN 2025