

HI-ILS Z or LOC Z RWY 10L

LOC/DME I-BIL 111.5 Chan 52	APCH CRS 102°	Rwy Idg 10,518 TDZE 3585 Arprt Elev 3662
---	-------------------------	---

[USAF]

BILLINGS LOGAN INTL (KBIL)

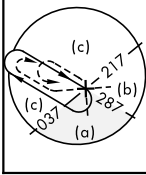
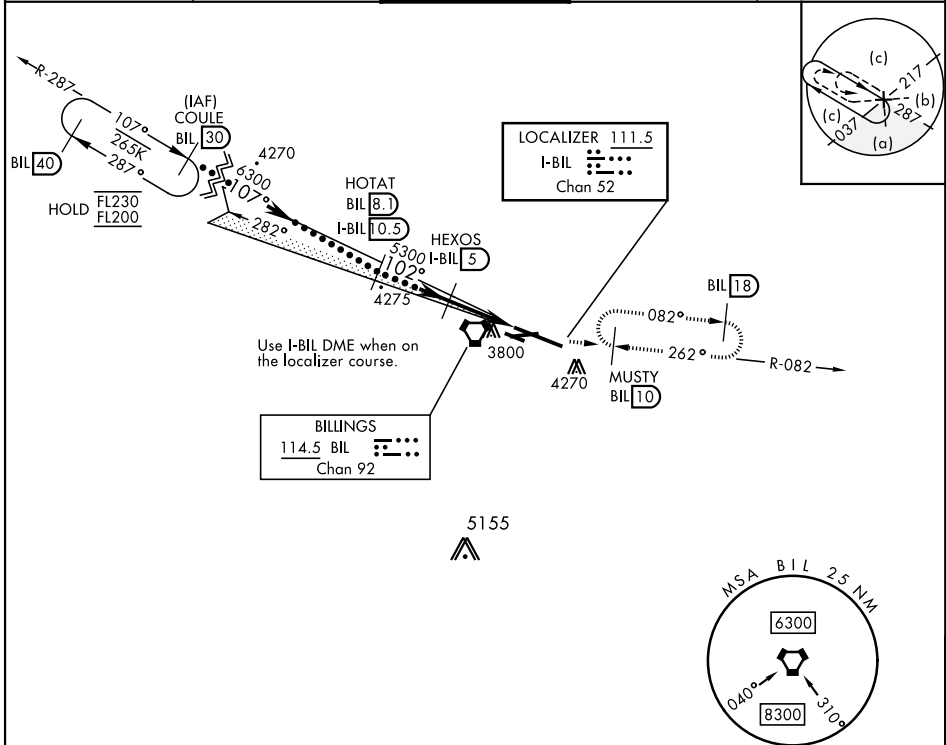
DME required. RADAR required for procedure entry.



MISSED APPROACH: Climb to 5700 on BIL VORTAC R-082 to MUSTY/10 DME and hold.

▼ * When ALS inop, increase CAT E RVR to 40.
** When ALS inop, increase CAT CDE RVR to 60.

ATIS 126.3	BILLINGS APP CON 120.5 284.6	BILLINGS TOWER 127.2 257.8	GND CON 121.9	CLNC DEL 121.9
----------------------	--	--------------------------------------	-------------------------	--------------------------



EMERG SAFE ALT 100 NM 15,000

COULE (30) FL200	HOTAT (8.1) I-BIL (0.5)	HEXOS (5) I-BIL (0.5)	ZOBUM (2.1) I-BIL (1)	LOC DME	ELEV 3662	TDZE 3585
GS 3.00° TCH 51	6300	5300	4360	5700 BIL R-082		
CATEGORY	C	D	E			
S-ILS 10L *	3785/24 200 (200-½)					
S-LOC 10L **	4000/40 415 (500-¾)					
CIRCLING	4180-1½ 518 (600-1½)		4580-3 918 (1000-3)		REIL Rwy 25 and 28R HIRL Rwy 10L-28R MRL Rwy 7-25 and 10R-28L	

HI-ILS Z or LOC Z RWY 10L

NW-1, 15 MAY 2025 to 12 JUN 2025

NW-1, 15 MAY 2025 to 12 JUN 2025