

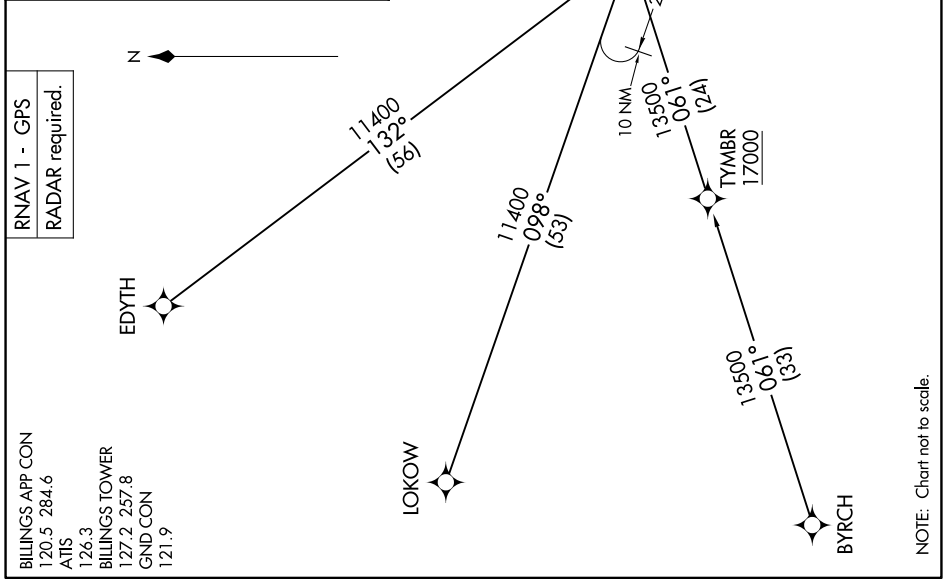
NW-1, 15 MAY 2025 to 12 JUN 2025

ARRIVAL ROUTE DESCRIPTION

BYRCH TRANSITION (BYRCH.CRAZIA)
EDYTH TRANSITION (EDYTH.CRAZIA)
LOKOW TRANSITION (LOKOW.CRAZIA)

LANDING RUNWAY 10L: From CRAZI on track 105° to cross LRSUN at 8000 and at 230K. Expect assigned approach or RADAR vectors to final approach course.

LANDING RUNWAY 28R: From CRAZI on track 098° to cross BBCAT at 8000 and at 210K, then on heading 102° or as assigned by ATC. Expect assigned approach or RADAR vectors to final approach course.



NW-1, 15 MAY 2025 to 12 JUN 2025

NOTE: Chart not to scale.