

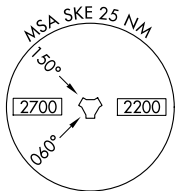
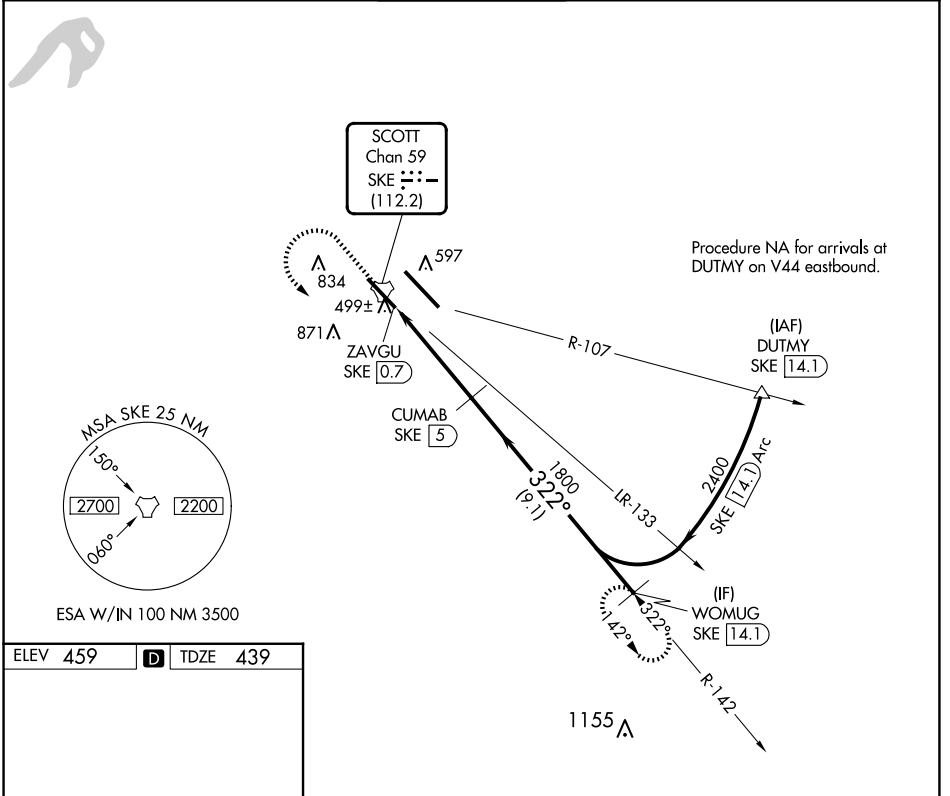
TACAN SKE Chan 59 (112.2)	APP CRS 322°	Rwy Idg TDZE Apt Elev	7822 439 459
--	------------------------	-----------------------------	---

TACAN RWY 32L

SCOTT AFB/MIDAMERICA ST LOUIS (BLV)

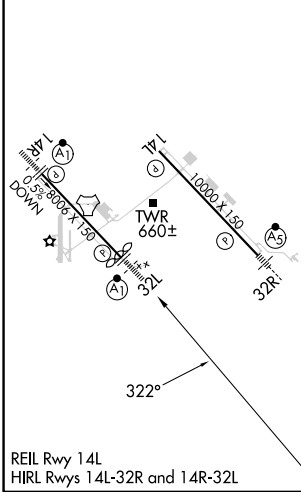
<p>For inop ALS, increase S-32L Cat C/D/E visibility to 1½ SM.</p>		<p>MISSED APPROACH: Climb to 1500 then climbing left turn to 2400 on SKE R-142 to WOMUG/14.1 DME and hold.</p>

<p>ATIS ★ 128.7 256.7</p>	<p>ST LOUIS APP CON 125.2 281.5</p>	<p>SCOTT TOWER 128.25 253.5</p>	<p>GND CON 119.2 275.8</p>	<p>CLNC DEL 119.875 263.025</p>
--------------------------------------	--	--	---------------------------------------	--



ESA W/IN 100 NM 3500

ELEV 459	D	TDZE 439
----------	----------	----------



<p>1500</p> <p>2400</p> <p>↑</p>	<p>WOMUG SKE [14.1]</p>	<p>VGSI and descent angles not coincident (VGSI Angle 3.00/TCH 50).</p>	<p>WOMUG SKE [14.1]</p>		
<p>ZAVGU SKE [0.7]</p> <p>SKE [2]</p> <p>2.81°</p> <p>TCH 72</p> <p>1800</p>	<p>CUMAB SKE [5]</p>	<p>2400</p>			
<p>1.4 NM</p> <p>3 NM</p> <p>9.1 NM</p>					
<p>CATEGORY</p>	<p>A</p>	<p>B</p>	<p>C</p>	<p>D</p>	<p>E</p>
<p>S-32L</p>	<p>920/24</p>	<p>481 (500-½)</p>	<p>920/50</p>	<p>481 (500-1)</p>	<p>920/60</p> <p>481 (500-1½)</p>
<p><input checked="" type="checkbox"/> CIRCLING</p>	<p>1000-1</p> <p>541 (600-1)</p>	<p>1120-1</p> <p>661 (700-1)</p>	<p>1240-2¼</p> <p>781 (800-2¼)</p>	<p>1240-2½</p> <p>781 (800-2½)</p>	<p>1240-2¾</p> <p>781 (800-2¾)</p>

EC-3, 15 MAY 2025 to 12 JUN 2025

EC-3, 15 MAY 2025 to 12 JUN 2025